

# CHALLAMBI — CHAROLAIS —

4TH ANNUAL PRODUCTIONS PLUS BULL SALE  
18<sup>TH</sup> APRIL, 2026



**CHALLAMBI**  
CHAROLAIS

# Welcome TO CHALLAMBI CHAROLAIS

## 4TH ANNUAL PRODUCTIONS PLUS BULL SALE

Welcome to our 2026 Challambi Charolais Bull Sale, 18 April, 2026, AuctionsPlus, online.

Although we started the stud in 2011, we have been involved in breeding Charolais cattle since 2002, and have been continuously breeding Charolais ever since. We have invested heavily in our genetics and have been regularly introducing new genetics into our herd. This investment continues to be our highest priority in order to achieve the desired outcomes of our breeding program.

Our cattle are progeny sired by our own bulls, bred with a commercial focus. Our strong focus on EBVs ensures that the cattle produced hit the specs for grading MSA proving that adding a Challambi bull to your program will give your herd a commercial edge.

The bulls we have put together in this sale are a great representation of our herd and we believe they are amongst the best bulls we have produced to date. These bulls will thrive in all conditions, and will perform to a high standard whether for cross breeding or in purebred herds.

2025 was one of the toughest years we have had in our 25 years of farming and we have hand fed all our cattle. With our intensive investment in the bulls, we are proud of how extraordinarily well they have done and they are ready to go straight to work in your paddock.

2026 has made a great start weather wise and our sowing is nearly complete. Cattle prices are headed in the upward direction and 2026 is already shaping up to be a great year.

We welcome you all to our on farm open day on Saturday 11th April or please contact Nigel on 0427 828 804 to arrange a convenient time. If you have any questions feel free to give us a call.

Thank you

*Nigel Spink and Celeste Oliver*

Breeding profitable and affordable Charolais!



# 4TH ANNUAL PRODUCTIONS PLUS BULL SALE

SAT, 18<sup>TH</sup> APRIL 2026

— 20 BULLS —

AUCTIONSPLUS ONLINE  
ONLY SALE

Auction Opens Friday, 17<sup>th</sup> of  
April - 10AM

Auction Timer Starts 6pm 18<sup>th</sup> of  
April

(Once the timer begins, the  
timer will control the sale)

**FOR MORE  
INFORMATION**

Vendor

Nigel Spink  
0427 828 804

Conducting Agents

Jordan Arthur  
0438 934 416

Craig Pellow  
0428 780 219



**CHALLAMBI**  
CHAROLAIS





# AuctionsPlus

## How to Register as an AuctionsPlus user

1. To sign up to AuctionsPlus, fill in your details and create a password.
2. Verify your email.
3. Follow the steps to verify your ID.
4. Enter your PIC number, ABN and business details if relevant.
5. Carefully read and accept our user rules and responsibilities.
6. Complete the user quiz.
7. Submit your request to our team.



Scan to sign up now



Scan to see detailed  
step by step instructions



# AUCTIONSPLUS ONLINE ONLY SALE

ALL SIMULTANEOUS AUCTIONS (MEANING ALL LOTS ARE AVAILABLE AT ONE TIME) CONCLUDE VIA A TIMER SYSTEM.

ONCE THE TIMER IS VISIBLE AT THE TOP OF THE AUCTION IT CONTROLS THE AUCTION FINISHING - DEPENDENT ON BIDDING ACTIVITY. THE TIMER WILL COUNT DOWN TOWARDS ZERO, FROM THE NOMINATED TIME (EG 60 SECONDS), AND IF NO BIDS ARE PLACED, THE AUCTION WILL CLOSE.

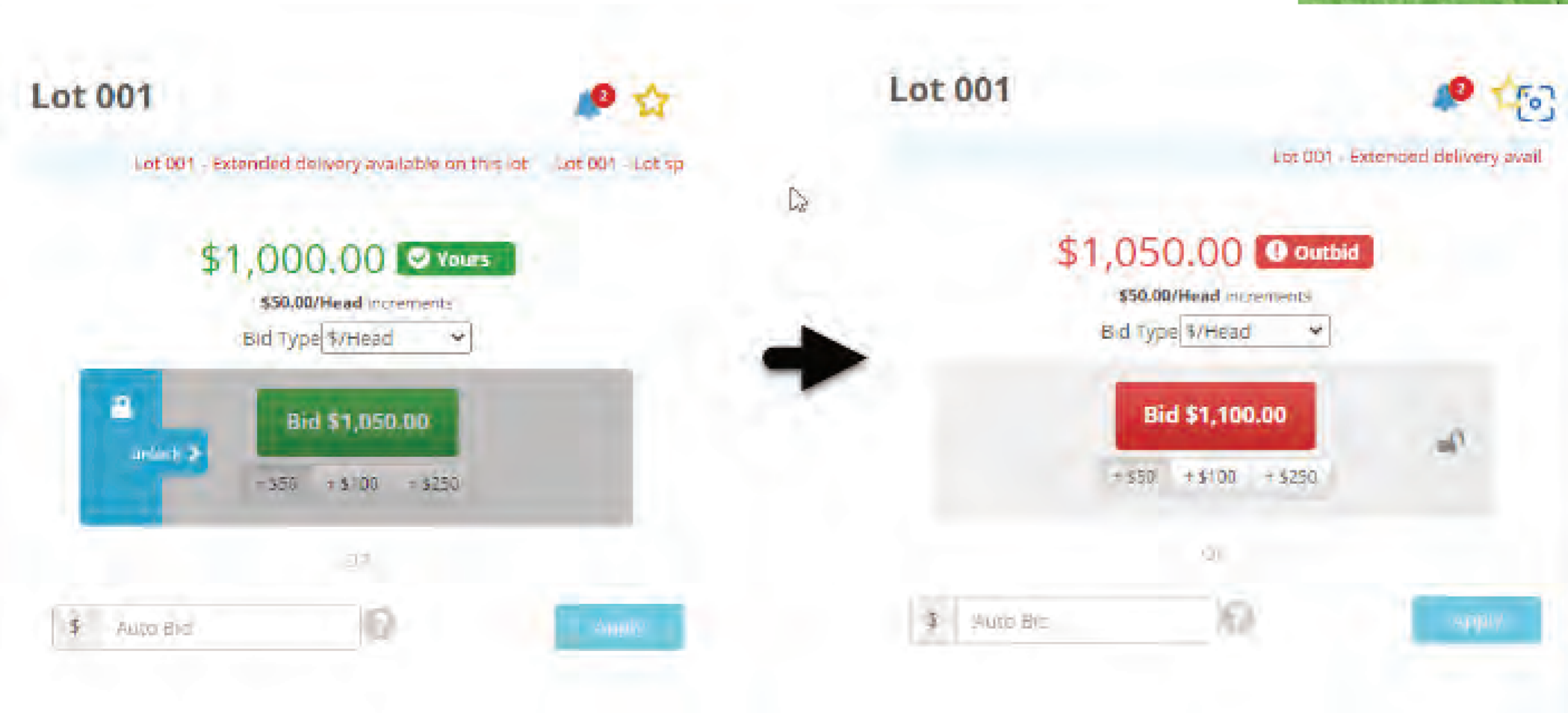
EVERY TIME A BID IS PLACED, ON ANY LOT IN THAT AUCTION, THE TIMER WILL RESTART AND BEGIN TO COUNT DOWN AGAIN, THE AUCTION CLOSES TOGETHER, MEANING ALL LOTS REMAIN AVAILABLE UNTIL THE SALE FINISHES.

IF YOU ARE BIDDING IN A SALE AND HOLDING A LOT, IT WILL REMAIN GREEN AND THEN TURN RED IF YOU ARE OUTBID. ONCE OUTBID, YOU HAVE THE TIME LEFT SHOWN ON THE TIMER TO DECIDE IF YOU WILL PLACE ANOTHER BID BEFORE THE AUCTION COULD CLOSE.

AN EXAMPLE OF BIDDING IS SHOWN BELOW

THE IMAGE ON THE LEFT SHOWS A USER WHO IS HOLDING LOT 001

IN THE IMAGE ON THE RIGHT, THE USER HAS BEEN OUTBID, AND NOW HAS THE OPPORTUNITY TO BID AGAIN.

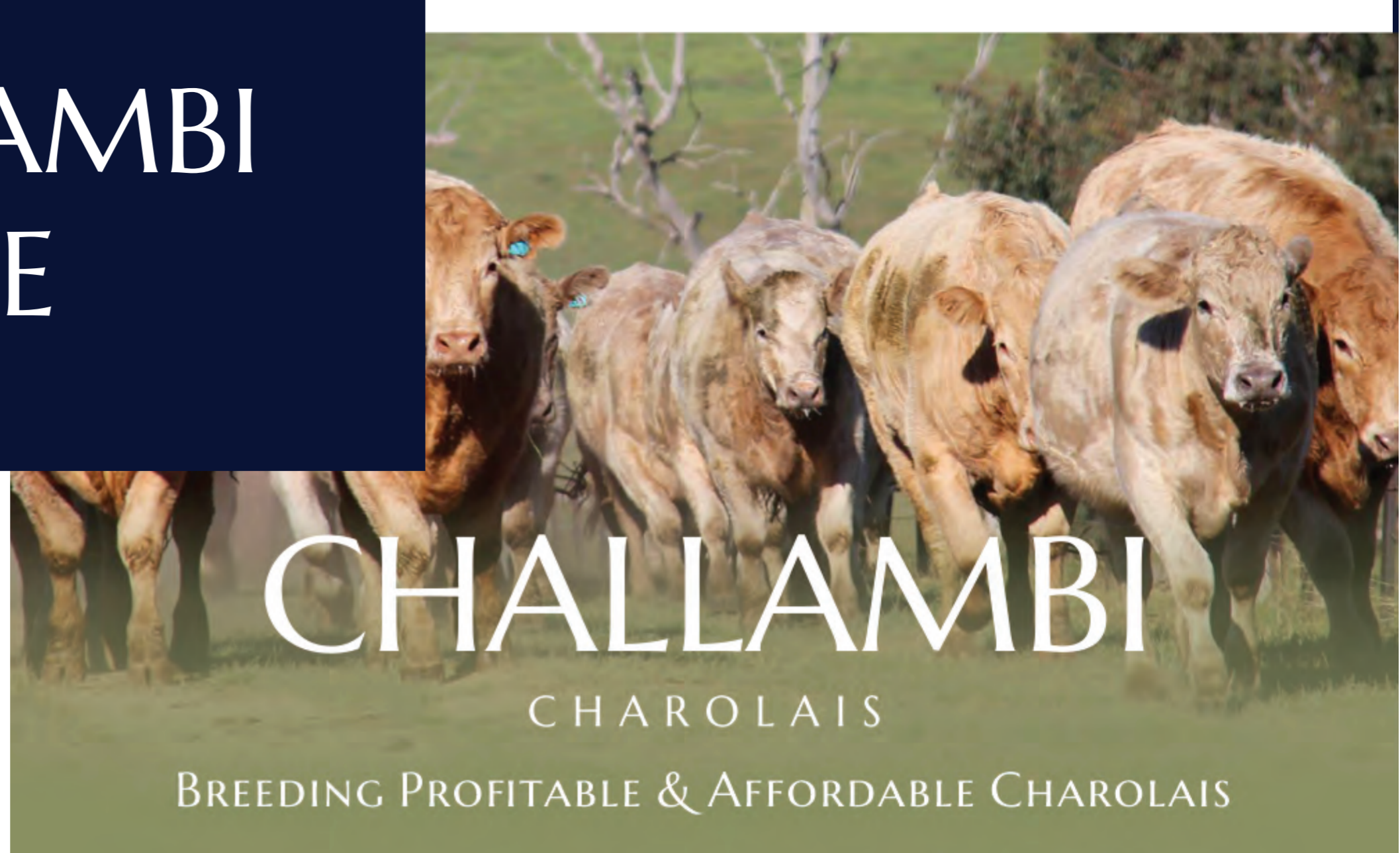


ANY QUESTIONS REGARDING AUCTIONSPLUS PLEASE FEEL FREE TO CONTACT ONE OF OUR AGENTS



# AuctionsPlus™

# THE CHALLAMBI ADVANTAGE



## ANIMAL HEALTH

ALL OF THE SALE BULLS HAVE BEEN VACCINATED WITH THE FOLLOWING; BOTULISM, VIBRIO & 7IN1. ALL SALE BULLS HAVE PASSED A SEMEN TEST, CARRIED OUT BY CORRYONG VETERINARY CLINIC .

## ADDED GROWTH

THE AVERAGE 200 & 400 DAY GROWTH FOR THIS YEARS SALE DRAFT IS ABOVE BREED AVERAGE! THE CHALLAMBI SALE BULLS AVERAGE +15 FOR 200D & +28 FOR 400D, WITH THE BREED AVERAGING +12 FOR 200D & +24 400D. THIS IS A CHALLAMBI ADVANTAGE, ADDED GROWTH!

## ADDED CARCASS

ALONGSIDE THE STUD HERD, CHALLAMBI RUN A PRODUCTIVE STRAIGHT CHAROLAIS COMMERCIAL OPERATION AS WELL, WITH THE MAIN FOCUS OF PRODUCING CATTLE THAT CAN FINISH ON GRASS FOR THE GREENHAMS NEVER EVER PROGRAM.

USING CHALLAMBI BRED BULLS, THESE RESULTING COMMERCIAL CALVES ARE EXPECTED TO MEET A STRICT SPECIFICATION IN ORDER TO GRADE WELL, FAT COVER & MUSCLE IS A CRUCIAL COMPONENT, THE CHALLAMBI SALE BULLS AVERAGE +1.6 & +2 FOR THEIR RIB & RUMP EBVs, WITH THE BREED AVERAGING +0.5 & +0.5. CHALLAMBI SALE BULLS AVERAGED +2.3 FOR EMA, WHILST THE BREED AVERAGE IS +1.8. CHALLAMBI BULLS AVERAGE ABOVE BREED AVERAGE FOR THEIR CARCASS TRAITS.

## TRANSPORT

HERE AT CHALLAMBI CHAROLAIS WE'RE NOT ONLY COMMITTED TO PROVIDING A QUALITY BULL FOR OUR CLIENT, BUT ALSO QUALITY SERVICE! THIS IS WHY WE'RE OFFERING FREE FREIGHT TO PAKENHAM, DUBBO & SOUTHERN QLD. CONDITIONS APPLY SO BE SURE TO GIVE US OR ONE OF OUR AGENTS A CALL PRIOR TO THE SALE TO BE ELIGIBLE FOR THE FREE FREIGHT OPTIONS!

# SALE INFORMATION



## INSPECTIONS

WE WELCOME ANY INSPECTIONS PRIOR TO THE SALE BY PRIVATE APPOINTMENT, HOWEVER PLEASE NOTE WE'RE HOLDING AN OPEN DAY ON THE 11TH APRIL, 2026, WHERE ALL BULLS WILL BE PENNED FOR YOUR INSPECTION. WE TAKE GREAT PRIDE IN THE TEMPERAMENT OF OUR BULLS, HOWEVER WE CANNOT TAKE RESPONSIBILITY FOR YOUR SAFETY WHEN YOU ENTER THE BULL PENS.

## ONLINE ONLY

OUR 4TH ANNUAL PRODUCTION PLUS SALE WILL BE HELD ONLINE ONLY VIA THE AUCTIONSPLUS SIMULTANEOUS PLATFORM, PLEASE REFER TO THE EXPLANATION OUTLINED IN THE CATALOGUE OR CONTACT A MEMBER OF QPL LIVESTOCK FOR FURTHER DETAILS.

## BREEDING GUARANTEE

ALL OF OUR BULLS ARE GUARANTEED BREEDERS. EVERY BULL IN THE SALE HAS PASSED A SEMEN TEST CARRIED OUT BY CORRYONG VETERINARY CLINIC. FERTILITY IS SOMETHING THAT WE HOLD WITH GREAT IMPORTANCE, OUR FEMALES MUST GET IN CALF AND HAVE A CALF ANNUALLY. SHOULD YOU HAVE ANY ISSUES WITH YOUR BULL, A CLAIM MUST BE MADE ACCOMPANIED BY A VETERINARY CERTIFICATE, WITHIN 10 MONTHS OF SALE DATE

## DNA TESTING

ALL BULLS IN THE SALE ARE SIRE VERIFIED AND POLL TESTED. A NUMBER OF BULLS IN THE SALE ARE PRESENTED HOMOZYGOUS POLLED, THEIR RESULTING PROGENY WILL THEREFORE PRODUCE POLLED CALVES OVER HORNED COWS.

## OUTSIDE AGENTS

OUTSIDE AGENTS ARE WELCOME! A GENEROUS REBATE OF 4% WILL BE PAID TO ALL AGENTS THAT SUCCESSFULLY PURCHASE ON BEHALF OF THEIR CLIENT. TO SUCCESSFULLY CLAIM THE REBATE, THE BUYER MUST BE INTRODUCED IN WRITING TO A MEMBER OF QPL LIVESTOCK BEFORE THE AUCTION COMMENCES. PAYMENT STRICTLY 7 DAYS!

# *The* CHALLAMBI *Story* CHAROLAIS



When Challambi Charolais was established in 2011, the focus was clear: to produce high-performance cattle that deliver real-world results for commercial producers. The Challambi breeding program is built around the power of hybrid vigour, particularly in British and European cross cows, delivering calves that are robust, fertile and highly productive in Australian conditions.

Charolais bulls are proven terminal sires, renowned for producing calves with high weaning weights, superior growth rates to finish, and outstanding feed efficiency compared with many feedlot-entry cattle. The result is progeny that reach market specifications faster, with strong carcass performance and excellent eye muscle area (EMA), making them ideal for grass-finished and pasture-based systems.

Crossbreeding maximises the strengths of both British and European genetics, producing cattle that combine growth, structure and efficiency with adaptability and durability. Challambi-bred bulls are selected not only for performance, but also for excellent calving ease, giving commercial operators confidence when joining both heifers and cows alike.

The Challambi program has continued to go from strength to strength since 2011, using a combination of elite genetics, embryo transfer and AI to build quality bloodlines. Sires of this year's sale bulls include Silverstream Padra, Silverstream Landis, Challambi Sargent and Pine Park Rio Bravo. These genetics have been used to produce cattle with low birth weight, strong early growth, polled heads and softness, while maintaining carcass strength and performance.

Progeny from Challambi Charolais are consistent, functional and commercially focused, producing red, white and cream calves that stand out for growth, muscle and market suitability.

Nigel prides himself on a practical, performance-driven approach to stud breeding, guided by a strong understanding of cattle genetics and commercial realities. "Quality breeds quality," he says — and that philosophy underpins every bull offered for sale

# “THE PROOF IS IN THE PROGENY”





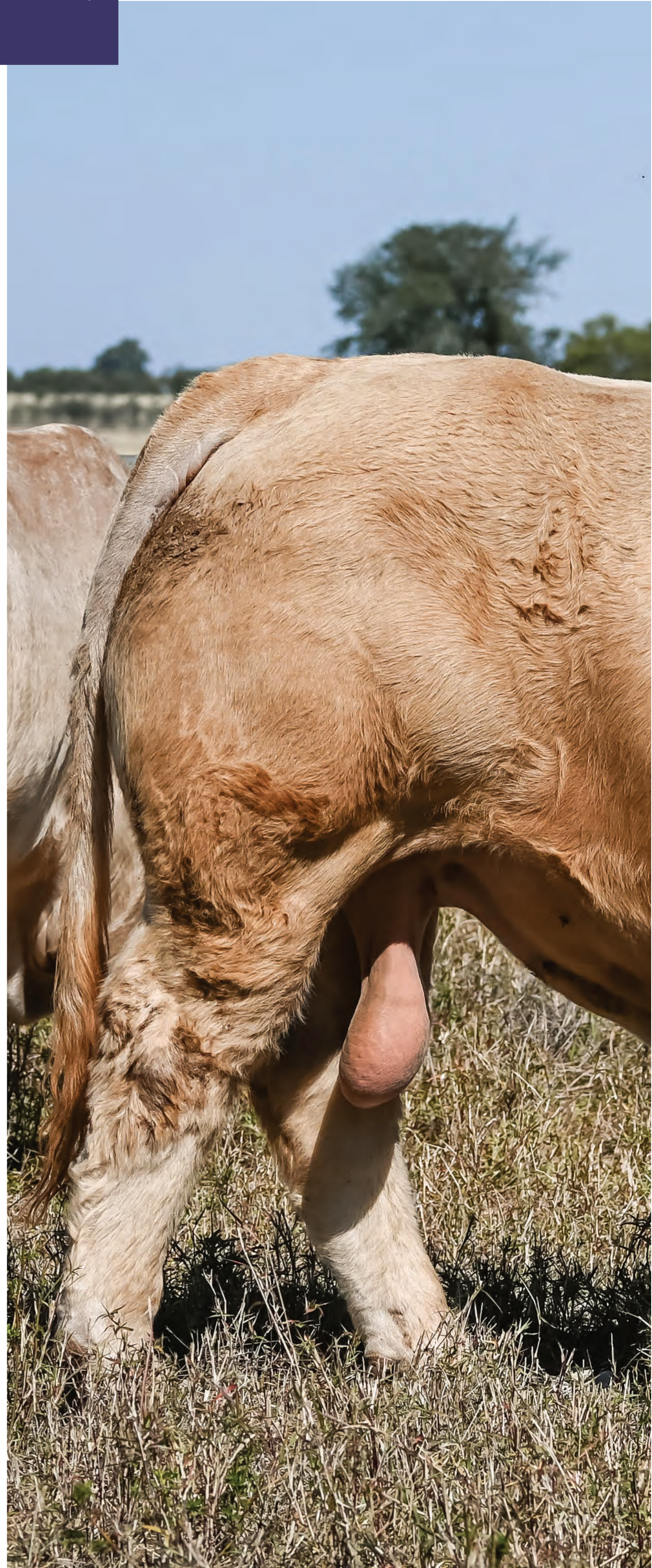
CHALLAMBI  
CHAROLAIS

# BAUHINIA PARK UNLIMITED (P) R/)

CHALLAMBI CHAROLAIS IS EXTREMELY EXCITED TO HAVE SECURED A SEMEN SHARE IN THE \$40,000, BAUHINIA PARK UNLIMITED (P)R/).

UNLIMITED IS SET TO PLAY AN IMPORTANT ROLE IN STRENGTHENING OUR RED FACTOR PROGRAM, CONTRIBUTING ADDED YIELD, PERFORMANCE, AND OVERALL POWER.

A SELECTION OF OUR LEADING FEMALES HAVE BEEN JOINED TO UNLIMITED, AND WE EAGERLY ANTICIPATE THE ARRIVAL OF HIS FIRST CALVES IN 2026, WITH HIGH EXPECTATIONS FOR THEIR IMPACT WITHIN THE HERD.



# SIRE OF THE FUTURE

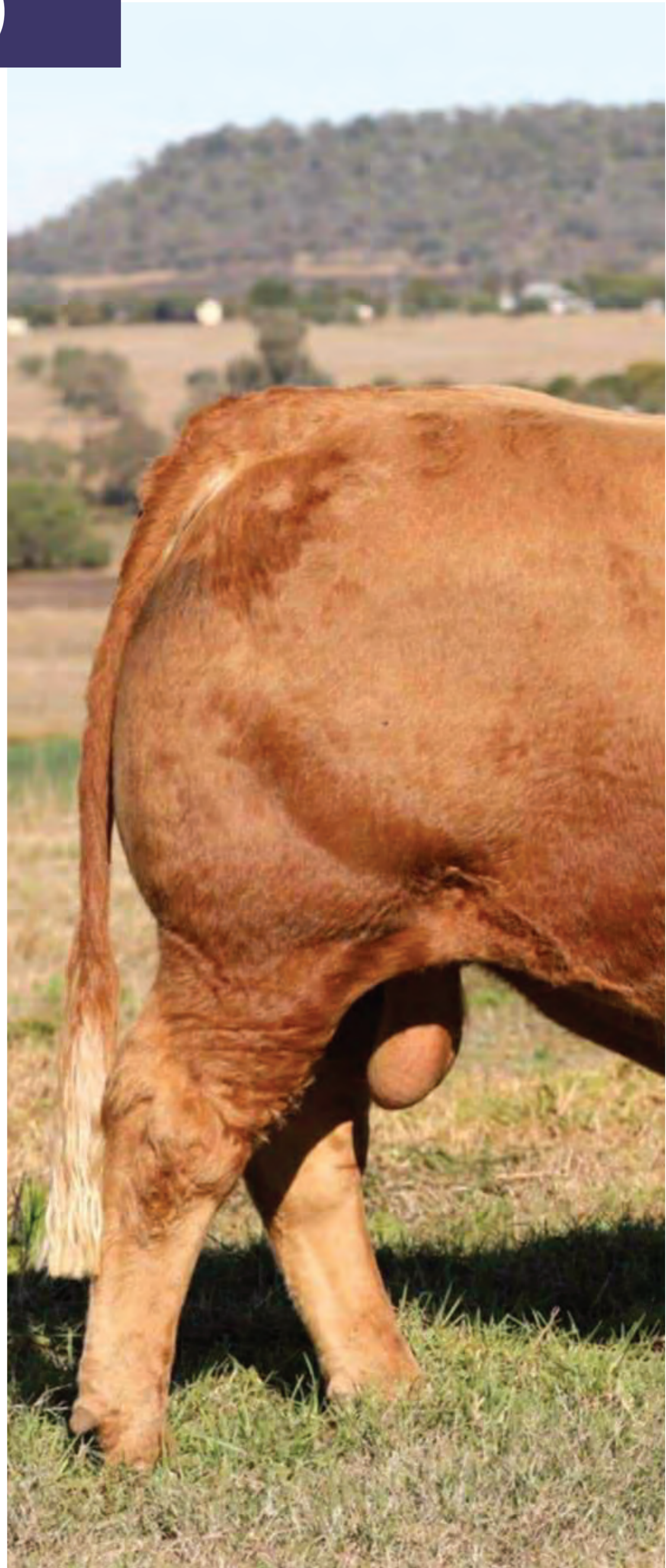


# MOUNTVIEW UNBELIEVABULL U60 (PP)(R/F)



CHALLAMBI  
CHAROLAIS

MOUNTVIEW UNBELIEVABULL (P) (R/F) IS ANOTHER EXCITING “SIRE OF THE FUTURE” WITHIN THE CHALLAMBI CHAROLAIS PROGRAM. A HOMOZYGOUS POLLED, RED FACTOR SIRE, UNBELIEVABULL COMBINES OUTSTANDING SIRE APPEAL WITH EXCELLENT BONE, DEPTH, AND NATURAL THICKNESS, UNDERPINNED BY THE GROWTH AND PERFORMANCE REQUIRED IN A MODERN CHAROLAIS HERD. HE WILL PLAY A KEY ROLE IN ACCELERATING OUR RED FACTOR PROGRAM WHILE MAINTAINING THE POWER AND PRODUCTIVITY EXPECTED IN OUR CATTLE, AND WE LOOK FORWARD TO SEEING HIS INFLUENCE COME THROUGH IN THE NEXT GENERATION.



# SIRE OF THE FUTURE



# REFERENCE SIRES



## SILVERSTREAM LANDIS

A proven sire we have returned to after initial success. Landis consistently adds growth, softness, and leaves productive, milky females.



## SILVERSTREAM PADRA

Padra offers excellent calving ease combined with capacity and shape. Selected for his balanced EBVs and suitability to our clients' requirements, he has done an outstanding job, with several impressive sons featured in this sale.



## CHALLAMBI SARGENT

Reserve Junior Champion at Sydney in 2022, Sargent was sold to the Vinicombe family with semen retained for in-herd use. He is leaving a strong legacy, including sons of exceptional quality—one being the second top-selling bull in last year's sale.



## CLARINDA DOWNTOWN Q32

Used selectively within the herd, Downtown continues to impress. The Lot 6 bull in this year's sale is a standout example, offering added growth and strong carcass EBVs.



## HEMINGFORD NEXT DIRECTION

Hemingford Next Direction sires our Lot 3 bull, out of our Canadian owned female. A bull used for his overall thickness, growth and carcass merit. We have also obtained some semen in Next Direction and look forward to using him in the future.

# CHALLAMBI CHAROLAIS



**LOT 1**

**CHALLAMBI *Voss* (AI) (P)**

CHA24V44E

08/08/2024

POLLED



SILVERSTREAM MAVERICK M183 (P)  
 SILVERSTREAM PADRA P7 (P)  
 SILVERSTREAM IZZY I125 (P)

GLENLEA JIMMY (AI) (ET) (P) (R/F)  
 CHALLAMBI CAAROL N21 (P) (R/F)  
 GLENLEA CAAROL 98TH (P)

Homozygous polled. A powerful, strong-topped bull with plenty of bone and natural thickness. He combines a low birthweight with impressive growth, ranking in the top 20% for 200-day and top 5% for 400-day performance. An ideal sire to produce outstanding weaners or to carry through to finishing with confidence.

| CHALLAMBI  | CED | GL   | BW  | 200D | 400D | 600D | MILK | SS  | EMA | RIB | RUMP | RBY  | IMF |
|------------|-----|------|-----|------|------|------|------|-----|-----|-----|------|------|-----|
| EBV        | 3.1 | -3   | -1  | 19   | 45   | 57   | 12   | 1.1 | 1.2 | 0.3 | 0.3  | -0.4 | 0.2 |
| RANK       |     |      |     | 10%  | 2%   | 5%   |      |     |     |     |      |      |     |
| B. AVERAGE | 0.9 | -2.8 | 0.2 | 12   | 24   | 32   | 6    | 1.1 | 1.8 | 0.5 | 0.5  | 0.1  | 0.1 |

# CHALLAMBI CHAROLAIS



**LOT 2**

## CHALLAMBI *Viper* (AI) (P)

CHA24V49E      10/08/2024      POLLED



SCR TRIUMPH 2135 (P)  
 SCX JEHU 233E (P)  
 SCX MISS MAGNUM 109X (P)

TR RED SMOKE M723761 (P) (R/F)  
 CHALLAMBI SHOWGIRL K12 (AI) (ET) (P) (R/F)  
 RANGAN PARK SHOWGIRL G22 (AI) (ET)

Polled. The only SCX Jehu son offered in this sale, this bull carries strong bone and presence. He is out of one of our leading cows, Showgirl K12, renowned for her consistency and quality. Expect calves with shape, depth and thickness. Backed by an outstanding maternal line, he offers the reliability and performance to deliver in a wide range of environments.

| CHALLAMBI  | CED  | GL   | BW   | 2OOD | 4OOD | 6OOD | MILK | SS  | EMA | RIB | RUMP | RBY | IMF |
|------------|------|------|------|------|------|------|------|-----|-----|-----|------|-----|-----|
| EBV        | -3.9 | -5.6 | -0.6 | 19   | 31   | 41   | 8    | 1.9 | 0.9 | 0.1 | -0.4 | 0.2 | 0.3 |
| RANK       |      | 9%   |      | 10%  |      |      |      | 15% |     |     |      |     |     |
| B. AVERAGE | 0.9  | -2.8 | 0.2  | 12   | 24   | 32   | 6    | 1.1 | 1.8 | 0.5 | 0.5  | 0.1 | 0.1 |

# CHALLAMBI CHAROLAIS



**LOT 3**

**CHALLAMBI *Vadar* (AI) (ET) (P)**

CHA24V67E

23/08/2024

POLLED



**CHALLAMBI**  
CHAROLAIS

POURIWAI S378 657010378E (P)  
HEMINGFORD NEXT DIRECTION N64 (P)  
HEMINGFORD I76

TRI-N-PAYDAY 419P (P)  
TRI-N PRAIRIE ROSE ET 74H (P) (R/F)  
TRI-N-PRAIRIE ROSE 40IP (P)

Homozygous polled. An outstanding opportunity to introduce fresh genetics into Australian herds. This bull is by Hemingford Next Direction and out of our Canadian donor cow, Tri-N Prairie Rose 74H, and is the only son offered outside of Palgrove. He ranks in the top 10% for Rib Fat and top 15% for Rump Fat, along with top 20% for 200-, 400- and 600-day growth. A bull with the scale and performance to develop into an impressive sire.

| CHALLAMBI  | CED  | GL   | BW  | 2OOD | 4OOD | 6OOD | MILK | SS  | EMA | RIB | RUMP | RBY  | IMF |
|------------|------|------|-----|------|------|------|------|-----|-----|-----|------|------|-----|
| EBV        | -1.1 | -3.6 | 0.9 | 16   | 32   | 43   | 9    | 2.9 | 1.9 | 2   | 2.3  | -0.9 | 0.5 |
| RANK       |      |      |     |      |      |      |      | 2%  |     | 7%  | 10%  |      | 20% |
| B. AVERAGE | 0.9  | -2.8 | 0.2 | 12   | 24   | 32   | 6    | 1.1 | 1.8 | 0.5 | 0.5  | 0.1  | 0.1 |

# CHALLAMBI CHAROLAIS



**LOT 4**

**CHALLAMBI *Valter* (AI) (P) (R/F)**

CHA24V54E

13/08/2024

POLLED




**CHALLAMBI**  
CHAROLAIS

PALGROVE HANNIBAL (AI) (ET) (P) (R/F)  
**CHALLAMBI SARGENT (AI) (P) (R/F)**  
 CHALLAMBI SHOWGIRL K12 (AI) (ET) (P) (R/F)

SILVERSTREAM GEDDES GIO2 (P)  
**CHALLAMBI NOLANA Q30 (AI) (P)**  
 CHALLAMBI NOLANA K19 (AI) (P) (R/F)

Polled. A standout red bull by Challambi Sargent, combining eye appeal with elite performance figures. He ranks in the top 4% for Rib and Rump Fat and top 10% for EMA. With added bone and depth of body, he's a powerful individual we regard very highly.

|  CHALLAMBI | CED  | GL   | BW  | 2OOD | 4OOD | 6OOD | MILK | SS  | EMA | RIB | RUMP | RBY  | IMF |
|---|------|------|-----|------|------|------|------|-----|-----|-----|------|------|-----|
| EBV   | -7.2 | -0.6 | 0.9 | 12   | 24   | 29   | 8    | 2   | 3.1 | 2.4 | 2.9  | -0.8 | 0.4 |
| RANK  |      |      |     |      |      |      |      | 15% | 8%  | 4%  | 5%   |      |     |
| B. AVERAGE  | 0.9  | -2.8 | 0.2 | 12   | 24   | 32   | 6    | 1.1 | 1.8 | 0.5 | 0.5  | 0.1  | 0.1 |

# CHALLAMBI CHAROLAIS



**LOT 5**

**CHALLAMBI *Vennor* (AI) (P) (R/F)**



**CHALLAMBI**  
CHAROLAIS

CHA24V68E

22/08/2024

POLLED

PARINGA RIO BRAVO D213E (AI) (P)  
**PINE PARK D213 BRAVO K148 (P)**  
 PINE PARK NOLLETTE Y34 (P)

PALGROVE HANNIBAL (AI) (ET) (P) (R/F)  
**CHALLAMBI CHIFFON S43 (AI) (ET) (P) (R/F)**  
 VALLEY VIEW CHIFFON SILVER N2 (AI) (ET) (P)

Homozygous polled. A powerful red-factor bull offering extra softness and length. His pedigree brings together Pine Park D213 Bravo K148, Palgrove Hannibal and Cigar, backed by the renowned Chiffon cow family. He ranks in the top 4% for Rib and Rump Fat and an impressive top 3% for EMA. A standout bull that is sure to attract attention.

| CHALLAMBI  | CED  | GL   | BW  | 2OOD | 4OOD | 6OOD | MILK | SS  | EMA | RIB | RUMP | RBY  | IMF |
|------------|------|------|-----|------|------|------|------|-----|-----|-----|------|------|-----|
| EBV        | -2.6 | -2.9 | 2.2 | 22   | 41   | 57   | 6    | 0.6 | 3.8 | 2.3 | 3.0  | -0.4 | 0.7 |
| RANK       |      |      |     | 4%   | 5%   | 5%   |      |     | 3%  | 5%  | 4%   |      | 9%  |
| B. AVERAGE | 0.9  | -2.8 | 0.2 | 12   | 24   | 32   | 6    | 1.1 | 1.8 | 0.5 | 0.5  | 0.1  | 0.1 |

# CHALLAMBI CHAROLAIS



**LOT 6**

## CHALLAMBI *Vulcan* (AI) (P)

CHA24V36E    03/08/2024    POLLED



- JWX DOWNTOWN 7C (P)
- CLARINDA DOWNTOWN Q32 (AI) (P)
- LANGI GHIRAN ELOISE 6 (P)
  
- CHALLAMBI JUNIOR (AI) (P)
- CHALLAMBI SHOWGIRL N6
- CHALLAMBI SHOWGIRL KIO (AI) (ET)

Polled Power & Performance: The only bull in this sale sired by Clarinda Downtown Q32, he's a true standout. Top 10% for low birthweight, above breed average for all growth EBVs, and elite top 3% EMA with top 4% rib and rump fat. Perfect for joining stud heifers or producing exceptional vealers in any commercial program—this bull combines genetics and performance you can rely on.

| CHALLAMBI  | CED  | GL   | BW   | 2OOD | 4OOD | 6OOD | MILK | SS  | EMA | RIB | RUMP | RBY  | IMF |
|------------|------|------|------|------|------|------|------|-----|-----|-----|------|------|-----|
| EBV        | -0.6 | -9.2 | -2.2 | 13   | 21   | 33   | 11   | 1.1 | 3.6 | 2.4 | 3.1  | -0.5 | 0.9 |
| RANK       |      | 1%   | 15%  |      |      |      | 15%  |     | 3%  | 4%  | 4%   |      | 4%  |
| B. AVERAGE | 0.9  | -2.8 | 0.2  | 12   | 24   | 32   | 6    | 1.1 | 1.8 | 0.5 | 0.5  | 0.1  | 0.1 |

# CHALLAMBI CHAROLAIS



**LOT 7**

**CHALLAMBI *Vinson* (AI) (P)**

CHA24V56E

15/O8/2024

POLLED



WR FOREMAN D6O2 (P)  
**BELBOURIE PARK ROYALTY (AI) (P)**  
 PARINGA KILO PACKER P334 (AI) (P)

PRO-CHAR DIAMONDBACK I13H (P) (R/F)  
**CHALLAMBI ROSLYN T25 (AI) (P)**  
 CHALLAMBI ROSLYN Q31 (AI) (P)

Polled. Eye-catching, sound-footed, strong-topped and deep-bodied. A breed-leading bull for low birthweight and short gestation, ideal for heifers or dairy herds. Top 5% BW, Top 5% gestation length, perfect for the commercial crossbreeding cattleman. His progeny are easy-doing, grass-finish types that perform.

| CHALLAMBI  | CED  | GL   | BW   | 2OOD | 4OOD | 6OOD | MILK | SS  | EMA | RIB | RUMP | RBY  | IMF |
|------------|------|------|------|------|------|------|------|-----|-----|-----|------|------|-----|
| EBV        | 12.7 | -5.8 | -4.2 | 17   | 26   | 34   | 7    | 1.4 | 2.3 | 2.3 | 2.7  | -0.8 | 0.2 |
| RANK       | 4%   | 8%   | 2%   | 20%  |      |      |      |     |     | 5%  | 6%   |      |     |
| B. AVERAGE | 0.9  | -2.8 | 0.2  | 12   | 24   | 32   | 6    | 1.1 | 1.8 | 0.5 | 0.5  | 0.1  | 0.1 |

# CHALLAMBI CHAROLAIS



**LOT 8**

**CHALLAMBI *Venturo* (AI) (P)**

CHA24V5OE

10/08/2024

POLLED



**CHALLAMBI**  
CHAROLAIS

SILVERSTREAM MAVERICK M183 (P)  
**SILVERSTREAM PADRA P7 (P)**  
 SILVERSTREAM IZZY I125 (P)

HARVIE REDEMPTION 36P MC28664I (P) (R/F)  
**VALLEY VIEW CHIFFON REDEMPTION (AI) (ET) (P)**  
 FERNSVALE CHIFFON (AI) (ET)

Homozygous Polled. Sired by Silverstream Padra and from the renowned Chiffon cow family, this bull combines growth and yield. Padra has a proven record of producing consistent, high-performing progeny. Ideal for breeding vealers through to bullocks, he offers the ability to grass-finish efficiently while delivering high MSA, returning more value to the commercial producer.

| CHALLAMBI  | CED  | GL   | BW  | 2OOD | 4OOD | 6OOD | MILK | SS  | EMA | RIB | RUMP | RBY | IMF  |
|------------|------|------|-----|------|------|------|------|-----|-----|-----|------|-----|------|
| EBV        | -2.7 | -1.4 | 1.1 | 14   | 25   | 23   | -2   | 0.6 | 1.7 | 0.7 | 0.7  | 0.1 | -0.5 |
| RANK       |      |      |     |      |      |      |      |     |     |     |      |     |      |
| B. AVERAGE | 0.9  | -2.8 | 0.2 | 12   | 24   | 32   | 6    | 1.1 | 1.8 | 0.5 | 0.5  | 0.1 | 0.1  |

# CHALLAMBI CHAROLAIS



**LOT 9**

**CHALLAMBI *Vincent* (AI) (P) (R/F)**



CHA24V29E

29/O7/2024

POLLED

**CHALLAMBI**  
CHAROLAIS

WR FOREMAN D6O2 (P)  
**BELBOURIE PARK ROYALTY (AI) (P)**  
 PARINGA KILO PACKER P334 (AI) (P)

PRO-CHAR DIAMONDBACK I13H (P) (R/F)  
**CHALLAMBI CAAROL T29E (AI) (P) (R/F)**  
 CHALLAMBI CAAROL N21 (P) (R/F)

Homozygous polled and sired by the calving ease specialist Royalty, this bull is out of a two-year-old heifer and boasts exceptional figures. Designed for heifers or dairy cows, he offers calving ease without sacrificing performance. Progeny should finish easily and hit market specifications with confidence.

| CHALLAMBI  | CED | GL   | BW   | 2OOD | 4OOD | 6OOD | MILK | SS  | EMA | RIB | RUMP | RBY  | IMF |
|------------|-----|------|------|------|------|------|------|-----|-----|-----|------|------|-----|
| EBV        | 16  | -6.9 | -3.4 | 20   | 46   | 61   | 18   | 1.9 | 1.6 | 1.8 | 2.1  | -1.2 | 0.3 |
| RANK       | 1%  | 4%   | 4%   | 7%   | 2%   | 3%   | 1%   | 15% |     | 10% | 15%  |      |     |
| B. AVERAGE | 0.9 | -2.8 | 0.2  | 12   | 24   | 32   | 6    | 1.1 | 1.8 | 0.5 | 0.5  | 0.1  | 0.1 |

# CHALLAMBI CHAROLAIS



**LOT 10**

**CHALLAMBI *Villard* (AI) (P)**

CHA24V71E

24/O8/2024

POLLED



SILVERSTREAM FOCUS F6  
**SILVERSTREAM LANDIS L179 (P)**  
 SILVERSTREAM DASHER H104 (P)

PALGROVE DOVER (AI) (P)  
**CHALLAMBI ELSA Q7 (AI) (P) (TW)**  
 CHALLAMBI ELSA L7 (AI) (ET) (P)

Polled. A son of Silverstream Landis, a sire that has consistently added growth, bone, and performance to our herd. This bull is smooth made with a soft skin and plenty of quality. Backed by the proven Elsa cow family, which continues to perform strongly in our program. Strong carcass figures suggest progeny that will grow efficiently and meet market specifications across a range of programs.

| CHALLAMBI  | CED | GL   | BW  | 2OOD | 4OOD | 6OOD | MILK | SS  | EMA | RIB | RUMP | RBY  | IMF |
|------------|-----|------|-----|------|------|------|------|-----|-----|-----|------|------|-----|
| EBV        | 7.5 | -6.1 | 0.2 | 7    | 22   | 30   | 13   | 1.1 | 2.8 | 1.8 | 2.2  | -0.8 | 0.7 |
| RANK       | 15% | 6%   |     |      |      |      | 7%   |     | 15% | 10% | 15%  |      | 9%  |
| B. AVERAGE | 0.9 | -2.8 | 0.2 | 12   | 24   | 32   | 6    | 1.1 | 1.8 | 0.5 | 0.5  | 0.1  | 0.1 |

# CHALLAMBI CHAROLAIS



**LOT 11**

## CHALLAMBI *Vale* (AI) (P)

CHA24V42E    06/08/2024    POLLED



- SILVERSTREAM FOCUS F6
- SILVERSTREAM LANDIS L179 (P)
- SILVERSTREAM DASHER H104 (P)
  
- CHALLAMBI QANTAS (AI) (P)
- CHALLAMBI HIGHNESS S27 (P)
- CHALLAMBI HIGHNESS M9 (AI) (ET) (P)

Homozygous polled. A Silverstream Landis son, a sire proven to consistently inject growth, bone, and performance into our herd. Backed by a strong set of EBVs and from a cow family responsible for our highest-selling bull to date. Well suited to producing grass-finished progeny that will grow out and finish with ease. A structurally sound bull with the type and balance to suit a wide range of breeding programs.

| CHALLAMBI  | CED | GL   | BW  | 2OOD | 4OOD | 6OOD | MILK | SS  | EMA | RIB | RUMP | RBY  | IMF |
|------------|-----|------|-----|------|------|------|------|-----|-----|-----|------|------|-----|
| EBV        | 0   | -5.5 | 0.1 | 19   | 31   | 41   | 9    | 1.8 | 3.4 | 1.6 | 2    | -0.4 | 0.7 |
| RANK       |     | 10%  |     | 10%  |      |      |      | 20% | 5%  | 15% | 15%  |      | 9%  |
| B. AVERAGE | 0.9 | -2.8 | 0.2 | 12   | 24   | 32   | 6    | 1.1 | 1.8 | 0.5 | 0.5  | 0.1  | 0.1 |

# CHALLAMBI CHAROLAIS



**LOT 12**

**CHALLAMBI *Vespar* (P)**

CHA24V86E

16/09/2024

POLLED




**CHALLAMBI**  
CHAROLAIS

CHARNELLE LOUIS (AI) (ET) (P)  
**CHALLAMBI TED (AI) (P) (R/F) (TW)**  
 CHALLAMBI SHOWGIRL K12 (AI) (ET) (P) (R/F)

CHARNELLE PANAMA (AI) (P) (TW)  
**CHALLAMBI ELSA S52 (P)**  
 CHALLAMBI ELSA Q22 (P) (TW)

Homozygous polled. The first son to be offered by our homebred sire, Challambi Ted, who stems from our highly regarded Showgirl K12 cow. Carries an impressive set of EBVs—ranking in the top 8% for EMA, top 15% for Rib and Rump fat, and top 25% across all growth traits. A reliable, well-bred bull backed by a proven cow family. Ideal for producing high-quality progeny suited to a range of market specifications.

|  CHALLAMBI | CED  | GL   | BW  | 2OOD | 4OOD | 6OOD | MILK | SS  | EMA | RIB | RUMP | RBY  | IMF |
|---|------|------|-----|------|------|------|------|-----|-----|-----|------|------|-----|
| EBV   | -1.9 | 0.1  | 2.2 | 17   | 31   | 44   | 4    | 1.9 | 3.1 | 1.6 | 2    | -0.1 | 0.7 |
| RANK  |      |      |     |      |      |      |      | 15% | 8%  | 15% | 15%  |      | 9%  |
| B. AVERAGE  | 0.9  | -2.8 | 0.2 | 12   | 24   | 32   | 6    | 1.1 | 1.8 | 0.5 | 0.5  | 0.1  | 0.1 |

# CHALLAMBI CHAROLAIS



**LOT 13**

**CHALLAMBI** *Vista* (P)

CHA24V92E

30/09/2024

POLLED



**CHALLAMBI**  
CHAROLAIS

ELDER'S BLACKJACK 788B (P)  
**CHARNELLE PANAMA (AI) (P) (TW)**  
 CHARNELLE ELLE (AI) (ET) (P)

TRINITY FARM ROSENDO  
**CHALLAMBI APPLE PIE LI6 (AI) (ET)**  
 ASHWOOD PARK APPLE PIE (AI) (P)

Polled. The youngest bull in the draft, backed by a dam that consistently produces high-performing progeny with added yield. Sired by the world-renowned Charnelle Panama. A larger framed, well-boned bull with the capacity to grow into a quality sire. Well suited to producing even, consistent lines of calves. A great option for producers chasing scale, performance, and uniformity in their herd.

| CHALLAMBI  | CED  | GL   | BW  | 2OOD | 4OOD | 6OOD | MILK | SS  | EMA | RIB | RUMP | RBY | IMF |
|------------|------|------|-----|------|------|------|------|-----|-----|-----|------|-----|-----|
| EBV        | -6.2 | -0.7 | 1.2 | 13   | 15   | 29   | 2    | 2.4 | 1.8 | 0.7 | 0.9  | 0.5 | 0.2 |
| RANK       |      |      |     |      |      |      |      | 6%  |     |     |      |     |     |
| B. AVERAGE | 0.9  | -2.8 | 0.2 | 12   | 24   | 32   | 6    | 1.1 | 1.8 | 0.5 | 0.5  | 0.1 | 0.1 |

# CHALLAMBI CHAROLAIS



**LOT 14**

**CHALLAMBI *Vero* (AI) (P)**

CHA24V62E

21/08/2024

POLLED



PARINGA RIO BRAVO D213E (AI) (P)  
**PINE PARK D213 BRAVO K148 (P)**  
 PINE PARK NOLLETTE Y34 (P)

CEDARDALE ZEAL I25Z (P)  
**CHALLAMBI SHOWGIRL S44 (AI) (ET) (P)**  
 RANGAN PARK SHOWGIRL G22 (AI) (ET)

Homozygous polled. Here's an outstanding opportunity to secure a genuine heifer bull. Backed by elite data—Top 15% Calving Ease Direct, Top 5% Birth Weight, Top 20% EMA, and Top 10% Rib and Rump Fat—this bull combines calving ease with real performance. A thick, well-structured bull with excellent temperament. Sired by Pine Park Rio Bravo K148, he offers valuable outcross genetics for stud producers.

| CHALLAMBI  | CED | GL   | BW   | 2OOD | 4OOD | 6OOD | MILK | SS  | EMA | RIB | RUMP | RBY  | IMF |
|------------|-----|------|------|------|------|------|------|-----|-----|-----|------|------|-----|
| EBV        | 7.9 | -3.9 | -3.2 | 13   | 16   | 18   | 4    | 0.5 | 2.7 | 1.9 | 2.6  | -0.1 | 0.2 |
| RANK       | 15% |      | 5%   |      |      |      |      |     | 20% | 9%  | 7%   |      |     |
| B. AVERAGE | 0.9 | -2.8 | 0.2  | 12   | 24   | 32   | 6    | 1.1 | 1.8 | 0.5 | 0.5  | 0.1  | 0.1 |

# CHALLAMBI CHAROLAIS



**LOT 15**

**CHALLAMBI *Valen* (AI) (P)**

CHA24V64E

22/O8/2024

POLLED



**CHALLAMBI**  
CHAROLAIS

SILVERSTREAM FOCUS F6  
**SILVERSTREAM LANDIS L179 (P)**  
 SILVERSTREAM DASHER H104 (P)

PARINGA HARVEY H338 (AI) (ET) (P)  
**CHALLAMBI DIGNA S32 (AI) (P) (R/F)**  
 CHALLAMBI DIGNA Q29 (AI) (ET) (P) (R/F)

Homozygous polled. Combining the strength of Silverstream Landis and Paring Harvey, this bull is thick-set, moderate in frame, and carries excellent softness. Backed by a strong set of figures, he is well suited for use over vealers and dairy cattle. A versatile sire that will add consistency, carcass quality, and high MSA grading potential to any program.

| CHALLAMBI  | CED  | GL   | BW  | 2OOD | 4OOD | 6OOD | MILK | SS   | EMA | RIB | RUMP | RBY  | IMF |
|------------|------|------|-----|------|------|------|------|------|-----|-----|------|------|-----|
| EBV        | -4.2 | -2.2 | 0.1 | 11   | 26   | 26   | 11   | -0.3 | 1.0 | 2   | 2.3  | -1.8 | 1.4 |
| RANK       |      |      |     |      |      |      | 15%  |      |     | 7%  | 10%  |      | 1%  |
| B. AVERAGE | 0.9  | -2.8 | 0.2 | 12   | 24   | 32   | 6    | 1.1  | 1.8 | 0.5 | 0.5  | 0.1  | 0.1 |

# CHALLAMBI CHAROLAIS



**LOT 16**

**CHALLAMBI *Valor* (AI) (P)**

CHA24V59E

19/08/2024

POLLED



PALGROVE HANNIBAL (AI) (ET) (P) (R/F)  
**CHALLAMBI SARGENT (AI) (P) (R/F)**  
 CHALLAMBI SHOWGIRL K12 (AI) (ET) (P) (R/F)

RBM FARGO YIII (P)  
**CHALLAMBI NOLANA S30 (AI) (P)**  
 CHALLAMBI NOLANA Q30 (AI) (P)

Homozygous polled. This bull is loaded with premium genetics, including Challambi Sargent, RBM Fargo, and Silverstream Geddes. Top 6% for Birthweight, top 2% for Rib and Rump fat, and top 20% for EMA, he offers excellent heifer bull potential. A soft, easy-doing bull with outstanding overall balance and performance.

| CHALLAMBI  | CED | GL   | BW   | 2OOD | 4OOD | 6OOD | MILK | SS  | EMA | RIB | RUMP | RBY  | IMF |
|------------|-----|------|------|------|------|------|------|-----|-----|-----|------|------|-----|
| EBV        | 3.3 | -2.7 | -3.0 | 13   | 19   | 15   | 8    | 1.9 | 2.6 | 2.8 | 3.6  | -1.3 | 0.5 |
| RANK       |     |      | 6%   |      |      |      |      | 15% | 20% | 2%  | 2%   |      | 20% |
| B. AVERAGE | 0.9 | -2.8 | 0.2  | 12   | 24   | 32   | 6    | 1.1 | 1.8 | 0.5 | 0.5  | 0.1  | 0.1 |

# CHALLAMBI CHAROLAIS



## CHALLAMBI

CHAROLAIS

LOT 17

CHALLAMBI *Volante* (P)

CHA24V73E

28/08/2024

POLLED



CHALLAMBI  
CHAROLAIS

ELDER'S BLACKJACK 788B (P)  
 CHARNELLE PANAMA (AI) (P) (TW)  
 CHARNELLE ELLE (AI) (ET) (P)

NWMSU DOC SILVER 362 PLD M669488 (P)  
 CHALLAMBI CAAROL Q27 (AI) (P) (R/F)  
 CHALLAMBI CAAROL N21 (P) (R/F)

Homozygous polled. Panama has produced a larger framed, later-maturing bull with both calving ease and exceptional growth. Ideal for adding consistency and enhanced performance to a crossbred herd, he is a bull that will deliver both structure and productivity. He has a quiet temperament and the ability to finish easily off grass.

| CHALLAMBI  | CED | GL   | BW   | 2OOD | 4OOD | 6OOD | MILK | SS  | EMA | RIB | RUMP | RBY  | IMF |
|------------|-----|------|------|------|------|------|------|-----|-----|-----|------|------|-----|
| EBV        | 7.3 | -4.3 | -3.2 | 14   | 33   | 46   | 12   | 3.6 | 1.5 | 0.4 | 0.7  | -0.2 | 0.5 |
| RANK       | 15% | 25%  | 5%   | 20%  | 20%  |      | 10%  | 1%  |     |     |      |      | 20% |
| B. AVERAGE | 0.9 | -2.8 | 0.2  | 12   | 24   | 32   | 6    | 1.1 | 1.8 | 0.5 | 0.5  | 0.1  | 0.1 |

# CHALLAMBI CHAROLAIS



**LOT 18**

**CHALLAMBI *Vernon* (AI) (P) (R/F)**



CHA24V35E

02/08/2024


POLLED

**CHALLAMBI**  
CHAROLAIS

SILVERSTREAM FOCUS F6  
**SILVERSTREAM LANDIS L179 (P)**  
 SILVERSTREAM DASHER HIO4 (P)

GLENLEA JUST RED (AI) (ET) (P) (R/F)  
**CHALLAMBI SHOWGIRL S46 (AI) (P) (R/F)**  
 CHALLAMBI SHOWGIRL KII (AI) (ET) (P) (R/F)

Polled, this red Silverstream Landis son was born two weeks early, showing his very short gestation and natural calving ease. Perfect for heifers, he also has the ability to produce both red and black calves on black cows. Smaller framed, early-maturing, and from a dam that consistently delivers quality progeny.

|  CHALLAMBI | CED | GL   | BW   | 2OOD | 4OOD | 6OOD | MILK | SS  | EMA | RIB | RUMP | RBY  | IMF |
|---|-----|------|------|------|------|------|------|-----|-----|-----|------|------|-----|
| EBV   | 8   | -7.9 | -1.5 | 10   | 20   | 14   | 10   | 0.9 | 2.2 | 1.8 | 2.3  | -0.8 | 0.7 |
| RANK  | 15% | 2%   | 20%  |      |      |      | 20%  |     |     | 10% | 10%  |      | 9%  |
| B. AVERAGE  | 0.9 | -2.8 | 0.2  | 12   | 24   | 32   | 6    | 1.1 | 1.8 | 0.5 | 0.5  | 0.1  | 0.1 |

# CHALLAMBI CHAROLAIS



LOT 19 WITHDRAWN



LOT 20 WITHDRAWN





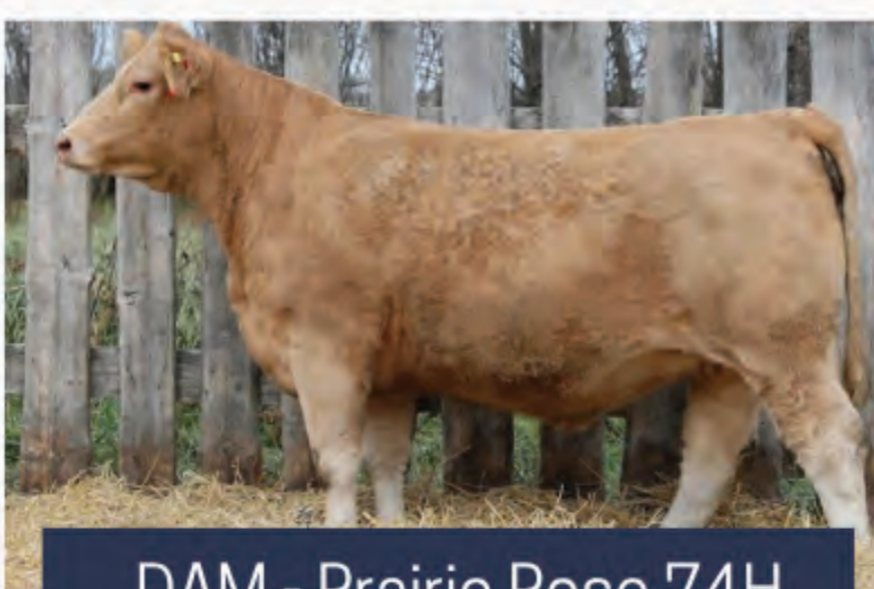
# CHALLAMBI UPWOOD (AI)(ET)(P)(R/F)



**DNA tested - NON-DILUTER!**



SIRE - Captain Morgan



DAM - Prairie Rose 74H



GRAND DAM - Prairie Rose 401P

**\$60/UNIT  
(MIN. ORDER  
10 UNITS)**

**LIMITED SUPPLY!**

Don't miss your chance to access genetics from Challambi Upwood – the first and only son of the legendary Tri-N Captain Morgan to be sold in Australia, recently fetching \$15,000 at the Annual Challambi Bull Sale. His dam, Tri-N Prairie Rose, was purchased for \$30,000 CAD by Challambi and is out of Canada's highest milking EPD cow family. Upwood is also the first and only Charolais bull in Australia DNA tested as a NON-DILUTER!

📞 Jordan Arthur 0438 934 416    ✉️ [jordan.arthur@qplrural.com.au](mailto:jordan.arthur@qplrural.com.au)

# Notes



*Thankyou for your Support!*



**CHALLAMBI**

CHAROLAIS