



presents the

# Autumn Extravaganza CHAROLAIS FEMALE SALE

Including the Complete Dispersal of Barber Charolais



12noon, Friday 26th April 2024

ONLINE ONLY. Both video and live audio via AuctionsPlus.

[WWW.GLENLEABEEF.COM.AU](http://WWW.GLENLEABEEF.COM.AU)

# 2023 PHOTOS



**LOT 1 ~ GLE Q73E**



**LOT 2 ~ JAJ P809E**



**LOT 4 ~ JAJ P77E**



**LOT 5 ~ GLE Q75E**



**LOT 7 ~ MAW R106E**



**LOT 11 ~ GLE Q901E**



## Welcome to the Autumn Extravaganza **CHAROLAIS FEMALE SALE**

### Including the Complete Dispersal of Barber Charolais

Due to unforeseen family circumstances in the Barber family, the decision has been made to sell the farm and disperse the Barber Charolais Stud. The Glenlea Beef Team has been heavily involved in the breeding and genetic selection in this herd for the last 5 years, before the Barber's purchased this herd from Mawarra.

Successful sales of male progeny have been facilitated by Glenlea Beef through our Qld sales program on a joint venture basis, with only the best females retained to build the herd with special individuals added when opportunities arose.

The disappointment of having to sell the herd from the Barber family perspective, is offset by the opportunity this creates for new breeders to start their Charolais breeding journey or build upon what they have. This herd is full of highlights and outstanding individuals and cow families.

I look forward to discussing the Lots on offer with prospective purchasers. The whole Glenlea Beef team is here to assist in any way we can to improve your breeding, feeding and marketing of your stud charolais herd, therefore financial returns and enjoyment of breeding great Charolais Cattle.

**SPECIAL NOTE:** Due to the nature of the Barber herd offering being a dispersal situation they are offered on an as is, where is basis (with the exception of freight subsidies noted in the sale information pages). To identify the Barber dispersal lots, which are the majority in this sale, they are all have "[Barber Dispersal](#)" marked on lots.

All lots not identified as a Barber dispersal lots will have the same Glenlea Beef after sales back up and service we have always offered.

Regards,  
*Roderick Binny*  
Glenlea Beef



# Autumn Extravaganza

# CHAROLAIS FEMALE SALE

Including the Complete  
Dispersal of Barber Charolais

Presented By  
**GLENLEA BEEF**

## 12noon Friday 26th April 2024

**ONLINE ONLY. Both video and live audio via AuctionsPlus.**

**53 Cows & Calves**  
**34 PTIC and Joined Cows and Heifers**  
**10 Unjoined Heifers**  
**8 Embryo Lots and 4 Semen Lots**

### INSPECTIONS

By appointment only with Roderick Binny.  
All Barber Dispersal cattle located 25 Minutes  
west of Taree on NSW North Coast.

### VIDEOS

Videos will be available on AuctionsPlus prior to sale.



### Contact

**Roderick Binny P: 0409 911 791**

E: [rbinny@australiangrassfedmeats.com](mailto:rbinny@australiangrassfedmeats.com)

### AGENTS



#### QLD

Michael Smith 0428 541 711  
Andrew Meara 0427 210 634  
Jenni O'Sullivan 0428 222 080

#### NSW

Brian Kennedy 0427 844 047  
Paul Jameson 0428 667 998

#### Victoria

Ross Milne 0408 057 558

**WWW.GLENLEABEEF.COM.AU**

**HEALTH AND FERTILITY:** All females are sold as fertile and joined, PTIC or unjoined. We have a number of lots that maybe too early to detect in calf on sale day. These will be sold as joined and a recommendation to run with a bull when arrived at purchaser's property. More details will be provided in the supplementary sheet prior to sale as to the pregnancy status of individual lots.

**EXCLUDING ANY BARBER DISPERSAL LOTS** - see [Welcome page](#) for details.

Any animal not conceiving within 6 months of purchase, the procedure will be a vet examination then discussion with Glenlea Beef. We will either arrange to return the animal to get pregnant at one of our properties and then return to purchasers at 50/50 share cost of transport or find another solution by mutual agreement if the first solution is not practical due to distance or other factors. This does not include animals that are injured or suffering disease contracted after the sale. We strongly recommend you insure your purchases.

On rare occasion a female tested and sold as PTIC may lose the pregnancy after sale, due to transport stress, change of environment or other factor, this is at purchaser's risk.

**VACCINATIONS:** **BARBER DISPERSAL LOTS** 5 in1 up to date. All other lots: 7 in 1, 3 day vaccinated.

**TICK FEVER:** Any lots requiring Bleeding prior to delivery, this can be done at PineDock at Casino, with cattle held there for 3 weeks post sale for vaccination to take full effect, this will be provided at minimum cost to purchaser, call James Dockrill on 0400 387 116 to find out details and costs.

**INSURANCE:** We recommend you insure your new purchases. Elders can help you can arrange this at fall of hammer sale day.

**AGENT REBATE:** **DOES NOT APPLY TO BARBER DISPERSAL LOTS.** For all other lots, a rebate of 1% to all licensed agents is available, introducing buyers 24 hours prior to sale and settling accounts within 7 days.

**TRANSPORT:** Delivery will be co-ordinated by nominated sale agents. Maximum charges for delivery to Albury for southern buyers is \$250 per cow/calf and \$200 per individual lot. To Toowoomba for northern buyers that will be \$250 per cow/calf and \$200 per individual lot.

**PHONE BIDDING:** Phone bidding is available by contacting the agents or Glenlea prior to sale to arrange for a dedicated agent to call you and assist you with your bidding.

**ACCURACY OF CATALOGUE:** Every effort is made to be as accurate as possible. However mistakes can happen in the construction of catalogue and printing, we will resolve any issues at best as possible but make no warranty as to accuracy, Glenlea Beef and its agents prepared the catalogue from information supplied by Barber Charolais and make no warranty as to its accuracy.

**DNA TESTING:** If DNA testing has not be done on a lot, neither Barber or Glenlea make any warranty as to DNA verification. All DNA testing results, including sire verification, polling status and MYO and BPA status is available on any lot tested on the charolais data base, talk to Rod Binny for any clarification.

**CHAROLAIS BREEDPLAN:** We no longer print detailed explanations of BREEDPLAN in our catalogues. All information explaining BREEDPLAN and how to use it to help with your selections is available at the click of your mouse. For more detailed discussion about individual lot EBV's call Rod Binny to discuss.



**Can't make the sale?**  
**Register in just seven easy steps and log onto AuctionsPlus to bid from anywhere on your phone, tablet or desktop.**

- 1 REGISTER ONLINE**  
FREE once off registration for all auctions.
- 2 COMPLETE BUYER INDUCTION**  
The buyer induction will help you understand the roles and responsibilities of everyone on the AuctionsPlus system.
- 3 VIEW CATALOGUE**  
Stock history, photos, videos, pedigrees and more. You can also favourite lots you are interested in.
- 4 ENTER AUCTION**  
Log into the auction anytime, anywhere and bid on your mobile, tablet or computer. Auctions can end after 30 minutes so get in early.
- 5 Auto bid**  
Can't stay for the whole sale? Set your maximum bid on the lot that you want to purchase and let the computer bid for you.
- 6 CONTACT SELLER**  
If successful, contact selling agent to arrange payment and delivery. Or if you are the highest bidder you can log into your dashboard to meet the reserve.
- 7 PAYMENT**  
Via the selling agent's terms and conditions.
- 8 DELIVERY**  
Arrange transport of livestock at your expense.

Contact AuctionsPlus on (02) 9262 4222  
or [www.auctionsplus.com.au](http://www.auctionsplus.com.au)

Australian Charolais breeders have embraced performance recording as other countries have reduced their efforts, I have seen this first hand in north America. Our data now is more accurate and detailed, making looking overseas less likely to add genetics that take your herd forward in genetic development than using **Australian evolved genetics that are the best in the world for our environments and markets** with large amounts of individual data to help us as seedstock producers, identify positive influences.

Glenlea beef is now a large seedstock enterprise, including JV herds total over 1,000 Charolais females. We have been using **Australian bred sires** to continue the evolution of the herd over the last 10 to 15 years with limited use of overseas sires. Where you will see overseas as well Australian sires in the Glenlea herd is in our E.T. program using **exclusive proven sires** in very specific planned matings to produce elite progeny from our highest genetic merit females, our donors!

**Our genetic base** of the Glenlea herd is now as diverse as the breed in Australia, with a blend of many bloodlines and different phenotypes to produce an Australian type Charolais. We have a degree of type variation, which is necessary with our range of markets and geographic footprint, from higher growth and yield types for northern markets over bos indicus cows to more moderate, early maturing types that suit more southern markets, but all assessed through the same process for all economic traits. This will be evident through the catalogue and comments, and EBV's on individual lots will highlight this.

**Our breeding strategy** is to produce powerful performance cattle in a medium to moderate frame score with a complete carcass. By that we mean above average yield, EMA, fat cover and IMF%. Measuring birthweights to be able to assist our bull clients to make the best selections for their operation and maintaining calving ease through BW and early gestation length.

**Maternal strength** focus on fertility, milking ability with great udders and moderate sized teats for longevity. While we are primary a terminal breed, in northern markets especially, Charolais x heifers are retained in there 1000's, so as seedstock producers we must always have our customers and in turn their customers in the front of mind in our breeding decisions, as those decisions ripple down the supply chain and leave big impacts, both positive and negative.

**Polled genetics** have progress in our breed to match horned bloodlines for every economic trait. Our herd still has a number of horned females and these are joined to homozygous polled sires. 98% of our calves born in the last 5 years are polled, many homozygous, and all testing will be available in catalogue or supplementary sheet.

**BREEDPLAN** is a genetic evaluation tool now over 30 years old and proven across many breeds and countries. We no longer print a detailed general explanation in our catalogues for bull sales or female sales as that information is available at the touch of your phone screen or click of your mouse! We are happy to explain any of the finer points of EBV's as they relate to the Charolais breed and specifically to our cattle, just call and ask! In the comments of each lot, you will see our summary of the EBV's printed for that lot.

**Customer Service** is at the heart of what we do, we spend much of our time travelling to clients both commercial and stud to help with a full range of services. We provide many services to all our clients from the most basic to full stud breeding and marketing support. Your success is our success. We are here to assist and work with you and your agents to help you achieve the highest possible price for your Glenlea sired stock.

# REFERENCE SIRE

## GLENLEA JUST RED (AI) (ET) (P) (R/F)

TATTOO: GLE J5E  
DOB: 6/02/2013

HARVIE REDEMPTION 36P MC286641 (OAC Z6641E) (P)

SIRE: RANGAN PARK REDEMPTION E42 (RAN E42E) (P)

RANGAN PARK SHOWGIRL C7 (RAN C7E)

GLENLEA MEATBALL (GLE M44E) (P)

DAM: GLENLEA JANET U6E R/F (GLE U6E) (P)

GLENLEA JANET N36E (GLE N36E) (P)



		February 2024 Australasian Charolais Single-Step BREEDPLAN					
		CE Dir	GL	BW	200	400	600
EBV	-15.8	-0.4	+2.8	+18	+39	+54	
Acc	70%	86%	88%	81%	81%	81%	
		Milk	SS	Carc Wt	EMA	Rump	IMF
EBV	+8	-0.1	+25	+1	+0.9	+0.9	
Acc	68%	82%	70%	62%	69%	60%	

**COMMENTS:** The original GLENLEA RED sire. Homozygous Red and Polled, his progeny are all apricot colour and polled out of white charolais cows. His genetic value goes far beyond hide colour, a trait leader for all growth traits, with very positive fat cover so progeny fatten quickly.

*Photo at 7 years running with cows.*

# REFERENCE SIRE

## GLENLEA PHEONIX (P) (R/F)

TATTOO: GLE P41E  
DOB: 9/08/2018

RANGAN PARK REDEMPTION E42 (RAN E42E) (P)

SIRE: GLENLEA JUST RED (GLE J5E) (P)

GLENLEA JANET U6E R/F (GLE U6E) (P)

IMPAIR 1893102983 (OAF N189F)

DAM: VALLEY VIEW ESTELLA 416 (VLW H26E) (P)

PALGROVE ESTELLA 214 (PK A416E) (P)



		February 2024 Australasian Charolais Single-Step BREEDPLAN					
		CE Dir	GL	BW	200	400	600
EBV	-9.9	-1.4	+2.8	+23	+48	+71	
Acc	53%	76%	78%	73%	72%	70%	
		Milk	SS	Carc Wt	EMA	Rump	IMF
EBV	+10	+1.7	+39	+2.7	0	+0.2	
Acc	53%	75%	59%	54%	59%	52%	

**COMMENTS:** Big strong large footed bull, deep bodied with plenty of looseness of hide and extra fine hair type. Fast becoming our highest growth bull, top 1% of breed for all growth traits, all positive Carcass traits, PP polled and red.

*Photo at 24 months.*

# REFERENCE SIRE

## GLENLEA KOWBOY Q405 (P) (R/F)

TATTOO: GLE Q405E  
DOB: 28/03/2019

LT EASY BLEND 5125 PLD M705113 (OAU A5113E) (P)

SIRE: WON-CANYA KOWBOY (RJU K4E) (P/S)

ASHWOOD PARK GARNET (HAS G124E)

GLENLEA BIG GUN (GLE B10E) (P)

DAM: GLENLEA NOLANA 60TH (GLE G1E) (P/S)

GLENLEA NOLANA31ST R/F (GLE C20E)



		March 2024 Australasian Charolais Single-Step BREEDPLAN					
		CE Dir	GL	BW	200	400	600
EBV	-7.7	-0.4	+2.7	+17	+37	+55	
Acc	48%	62%	73%	61%	61%	67%	
		Milk	SS	Carc Wt	EMA	Rump	IMF
EBV	+10	+1.1	+27	+0.1	-0.5	+0.1	
Acc	42%	70%	53%	44%	45%	43%	

**COMMENTS:** This is the first offering of KOWBOY daughter's. Their brothers will feature at our bull sales later in the year and are an outstanding group of bulls. His progeny are exhibiting great temperament, growth, excellent carcass yield, consistency and are all apricot out of white cows.



# REFERENCE SIRE SHANDON / GLENLEA Q-BRICK (P)

TATTOO: GWN Q9E

DOB: 13/10/2019

GLENLEA HILTON (GLE H30E) (P)

SIRE: ORARA WATERFALL GLENLEA NORTH (WFA N25E) (P)

GLENLEA CHAROL 72ND (GLE J8E) (P)

GLENLEA JIMMY (GLE J4E) (P)

DAM: SHANDON JANET 1ST (GWN N5E) (P)

GLENLEA JANET 90TH (GLE K73E) (P)



		February 2024 Australasian Charolais Single-Step BREEDPLAN					
		CE Dir	GL	BW	200	400	600
EBV	+6.4	-1.4	-0.3	+16	+35	+45	
Acc	44%	57%	73%	60%	58%	59%	
		Milk	SS	Carc Wt	EMA	Rump	IMF
EBV	+13	+2.2	+30	+2.4	+1	+0.3	
Acc	39%	56%	43%	39%	45%	38%	

**COMMENTS:** First offering of Q-Brick's progeny. Early maturing, ideal carcass, gentle temperaments and all clean polled. We are really excited about his progeny and what they can achieve in future.

# REFERENCE SIRE

# ORARA WATERFALL GLENLEA NEPTUNE (P)

TATTOO: WFA N42E

DOB: 6/08/2017

GLENLEA EDDIE (GLE E14E) (P)

SIRE: GLENLEA JEDDI (VLW J15E) (P)

FERNVALE BONNY MANDIE (FEN B24E)

GLENLEA FREEWAY (GLE F22E) (P)

DAM: GOODVIEW BLONDIE 3RD (HEL J10E) (P)

GOODVIEW BLONDIE (HEL B4E) (P)



		February 2024 Australasian Charolais Single-Step BREEDPLAN					
		CE Dir	GL	BW	200	400	600
EBV	+4.9	-1.3	-0.1	+17	+33	+48	
Acc	44%	68%	73%	60%	60%	59%	
		Milk	SS	Carc Wt	EMA	Rump	IMF
EBV	+12	+1.6	+32	+2.2	-0.8	-0.3	
Acc	39%	59%	46%	42%	45%	41%	

**COMMENTS:** This sire is exclusive to the Barber and Glenlea herds. This is his first offering of progeny, both joined heifers and calves at foot. Early maturing, Low BW, extra over all carcass. Yearling sons sold to \$24000 at our 2022 Roma bull sale.

# REFERENCE SIRE

# MAW GLENLEA ASHWOOD S38 (AI) (P)

TATTOO: MAW S38E

DOB: 28/04/2021

ASHWOOD PARK RIO D213 F56E (HAS F56E) (P)

SIRE: RANGAN ASHWOOD F56 L84 (RAN L84E) (P)

RANGAN PARK DELIGHT G42 (RAN G42E) (P)

ASCOT KING ARTHUR K44E (JAJ K44E) (P)

DAM: ASCOT GOLDEN P12E (JAJ P12E) (P)

ASHWOOD PARK GOLDEN (HAS G54E) (P)



		February 2024 Australasian Charolais Single-Step BREEDPLAN					
		CE Dir	GL	BW	200	400	600
EBV	+17.2	-7.7	-4.1	+8	+19	+21	
Acc	46%	72%	72%	68%	68%	66%	
		Milk	SS	Carc Wt	EMA	Rump	IMF
EBV	+19	+1.9	+18	+3.4	+6	+0.3	
Acc	53%	73%	55%	50%	57%	50%	

**COMMENTS:** Easy calving heifer specialist, with great carcass and Fat Cover, top 1% of breed for calving ease and Low BW, EMA, Fat cover and Milk. Unique and amazing data spread in the Charolais breed. We are excited about his progeny on the ground and his fist calves at foot are offered on our high performance "Pheonix" daughter lots 44 to 49

# REFERENCE SIRE

## GLENLEA LOUIS R305 (P)

TATTOO: GLE R305E

DOB: 10/07/2020

GALLWAY - RS 8900451063 (OAF G1063F) (P)

SIRE: CHARNELLE LOUIS (GKA L73E) (P)

CHARNELLE ELLE (GKA E10E) (P)

GLENLEA HI GUY (GLE H52E) (P)

DAM: ORARA WATERFALL LESLIE (WFA L5E) (P)

VALLEY VIEW GC DC (VLW G44E) (P)



February 2024 Australasian Charolais Single-Step BREEDPLAN						
	CE Dir	GL	BW	200	400	600
EBV	-16.3	-2.4	+2.8	+10	+25	+31
Acc	43%	61%	70%	62%	63%	60%
	Milk	SS	Carc Wt	EMA	Rump	IMF
EBV	+8	+0.7	+15	+2.4	+1.3	+0.4
Acc	44%	73%	51%	46%	47%	45%

**COMMENTS:** Sold at our 2022 Roma sale for \$32,000 to Moondogundi Charolais, Mitch and Sarah Redding . A powerful carcass, early maturing, great boned bull, with a magnificent dam. We expect great things from this sire and he has been joined to a number of outstanding females in this catalogue.

# REFERENCE SIRE

## WATERFORD RED RASCAL (P) (R/F)

TATTOO: WET R121E

DOB: 25/01/2020

TEMANA GOLDEN LOGIE G66E (TJ G66E) (P)

SIRE: MOONGOOL MONOPOLY (DP2 M513E) (P)

MOONGOOL BUNYA VALE 4 (DP2 C155E) (P)

MOONGOOL ERNIE (DP2 E173E) (P)

DAM: WATERFORD YOU KAN KAN H57E (WET H57E) (P)

WATERFORD YOU KAN KAN E2 (WET E2E) (P)



February 2024 Australasian Charolais Single-Step BREEDPLAN						
	CE Dir	GL	BW	200	400	600
EBV	-0.1	+0.1	+0.9	+12	+29	+37
Acc	43%	57%	69%	60%	58%	59%
	Milk	SS	Carc Wt	EMA	Rump	IMF
EBV	+5	0	+27	+2	-0.6	+0.1
Acc	44%	61%	47%	39%	47%	38%

**COMMENTS:** Purchased by Glenlea in 2022, he is an outcross Red factor carcass sire with growth and an outstanding producing Dam. There are many outstanding cows PTIC to this bull in this sale and we are weaning his first drop of calves currently and they are outstanding types. Progeny of this bull will feature highly at our sales in the future.

# REFERENCE SIRE

## TAYLOR GLENLEA THE WIND MAKER (AI) (P)

TATTOO: TC3 22T8E

DOB: 13/06/2022

M6 GRID MAKER 104 PET M633377 (OAU W3377E) (P)

SIRE: LT WIND MAKER 4171 P M686519 (OAU Z6519E) (P)

LT ALLI 0287 PLD F872882 (OAU V2882E) (P)

ALLEDNAW GLENLEA MARLO (AKT M41E) (P)

DAM: GLENLEA MY GIRL 12TH (GLE Q511E) (P)

GLENLEA MY GIRL 10TH (GLE L199E) (P)



February 2024 Australasian Charolais Single-Step BREEDPLAN						
	CE Dir	GL	BW	200	400	600
EBV	+4	-4.6	-0.1	+11	+25	+32
Acc	32%	48%	50%	51%	47%	48%
	Milk	SS	Carc Wt	EMA	Rump	IMF
EBV	+7	+1.3	+22	+3.2	+1.8	+0.2
Acc	37%	47%	40%	35%	41%	35%

**COMMENTS:** Selected to join the Barber Kowboy heifers and back up after A.I to all heifers and 1st calvers in this sale. Early maturing, from an outstanding young cow, being her 1st calf, outcross sire, Low BW and breed leading carcass traits. We look forward to seeing his progeny out of the Kowboy daughters, a great phenotypic cross.



**MAW / Glenlea Neptune S31 (PP)  
2021 drop bull of LOT 14**

- High selling yearling bull at Glenlea's Roma Bull Sale 2022 for \$24,000.
- Sired by WFA/ Glenlea Neptune (P) an exclusive sire to Mawarra and Glenlea.



**MAW / Glenlea Neptune S37 (P)  
2021 son of LOT 31**

- Sold for \$20,000 at Glenlea's Roma Bull Sale 2022.
- Sired by WFA/ Glenlea Neptune (P) exclusive to Mawarra and Glenlea.



**MAW / Glenlea Lannister S93 (P)  
2021 son of LOT 10**

- Sold for \$14,000 at Glenlea's Roma Bull Sale 2022.



**MAW / Glenlea Ashwood S32 (PP)  
2021 son of LOT 9**

- Sold for \$15,000 at Glenlea's Roma Bull Sale 2022.



**MAW / Glenlea Ashwood S38 (PP)  
2021 son of LOT 12**

- Sold for \$19,000 at Glenlea's Roma Bull Sale 2022.



**MAW / Glenlea Swagger S10E (P) R/F  
2021 son of LOT 31A**

- Sold for \$10,000 at Glenlea's Casino Sale 2022

# BARBER DISPERSAL LOTS

The dispersal of the Barber herd is a tremendous opportunity for all breeders new and experienced to acquire high income earning stud females with production on the ground. Due to the nature of the Barber herd offering being a dispersal situation they are offered on an as is, where is basis (with the exception of freight subsidies noted in the sale information pages).

To identify the Barber Dispersal lots, which are the majority in this sale they are all have Barber Dispersal marked on lots.

All lots not identified as a Barber Dispersal lot will have the same Glenlea Beef after sales back up and service we have always offered.

LOT  
1

## GLENLEA NANETTE 2ND (P) (R/F)

TATTOO: GLE Q73E  
DOB: 11/09/2019

RANGAN PARK RIO BRAVO D15 (RAN D15E) (P)  
SIRE: GLENLEA KENWORTH (GLE K80E) (P)  
THW TATT MAC D10E (THW D10E) (P)

PALGROVE YUKON JACK (PK Y441E) (P)  
DAM: PALGROVE NANETTE 190 E431E (PK E431E)  
PALGROVE NANETTE 114 (PK Z296E)

BARBER DISPERSAL



### February 2024 Australasian Charolais Single-Step BREEDPLAN

	CE Dir	GL	BW	200	400	600	Milk	SS	Carc Wt	EMA	Rump	IMF
EBV	-0.5	-1.4	+1.2	+11	+20	+30	+4	+0.9	+17	+1.6	+0.6	+0.4
Acc	40%	55%	64%	56%	52%	51%	45%	48%	42%	36%	39%	35%

**DAM COMMENTS:** A classy young cow to start the sale! Has reared twins unassisted, big volumed, soft, well-muscled carcass, fine coated and perfect udder and teat placement.

Dam has been a great producer. Q73 is a maternal sister to Honourable P80 one of our "GLENLEA REDS".

Sire is Kenworth this lot and lot 5 are two of his best daughters, both purchased future donor prospects and with this dispersal sale now is your opportunity to add them to your herd.

EBV's reflect above average growth across all growth traits, fat cover and EMA with moderate BW.

**CALF COMMENTS:** Twins! Ready to wean. An outstanding job for a first calver on twins in the north coast environment. Sired by Turnbull's' Duty Free.



Dam PTIC to Waterford Red Rascal (PP) R/F  
Joined 29/9/23 to 22/12/23.



ZCB U731E



ZCB U732E

LOT  
2

ASCOT  
**ESTELLA P809E (AI) (ET) (P)**

TATTOO: JAJ P809E  
DOB: 22/09/2018

ROSEDALE FAIRLANE (MR F8E) (P)  
SIRE: ROSEDALE LUMP SUM (MR L8E) (P)  
ROSEDALE BEATRIX G231 (MR G231E) (P)

LT WYOMING WIND 4020 PLD (OAU P4020E) (P)  
DAM: PALGROVE ESTELLA 195 (PK Z498E) (P)  
PALGROVE ESTELLA 73 (PK S201E)

BARBER DISPERSAL

**CALF COMMENTS:** Sire prospect bull calf ready to wean. Sired by WFA / Glenlea Neptune (P) Calf Tattoo: ZCB U809E

**DAM COMMENTS:** Very appealing cow, length, softness, depth, fine coated, strong attractive polled head, good bone, this type of female would fit into the top end of any stud. Sire is Lump Sum, trait leader for all growth traits and Milk with well over 100 registered progeny who has produced many high value progeny at Ascot. Dam is a tremendous Donor female with 17 registered progeny and is a full sister to the very well-known sire, Palgrove Viagra (P) so incredibly proven genetics in this female. Her 2021 bull sold at Glenlea's Roma bull sale 2022 for \$13,000 at 16 months. EBV's Top 10% Rib and Rump Fat, Top 15% milk.



February 2024 Australasian Charolais Single-Step BREEDPLAN

	CE Dir	GL	BW	200	400	600	Milk	SS	Carc Wt	EMA	Rump	IMF
EBV	+1.0	-0.9	-0.4	+7	+12	+19	+10	+0.7	+12	+0.4	+1.4	+0.1
Acc	54%	68%	73%	67%	67%	65%	59%	67%	57%	53%	58%	52%



Dam joined with Glenlea Louis R305 (P) from 17/2/24 till sale day 26/04/24.

LOT  
3

MILFORD  
**GINA Q27E (AI) (P)**

TATTOO: JOH Q27E  
DOB: 23/03/2019

PALGROVE CHARM (PK C1043E) (P)  
SIRE: PALGROVE HALLMARK (PK H535E) (P)  
PALGROVE ALYSSA 47 (PK B835E) (P)

PALGROVE HERMES (PK H549E) (P)  
DAM: WATERFORD LADY GINA L33E (WET L33E) (P)  
DSK MY GINA D23E (DSK D23E) (P)

BARBER DISPERSAL

**CALF COMMENTS:** Sire prospect bull ready to wean. Exclusive outcross sire, WFA Glenlea Neptune (P) Calf Tattoo: ZCB U27E

**DAM COMMENTS:** This young cow has extra length, softness and bomb proof temperament. She has produced an outstanding bull that will be a top sale bull in 2025 or a retained sire for his new owner, that's why this female is being offered at lot 3! Sire has produced two outstanding bulls to date. Dam is lot 17 the champion show cow, she has 3 daughters in this sale.

EBV's Top 15% EMA, gestation Length and Calving ease. Top 25% Rib and Rump Fat. 9 traits above breed average.



February 2024 Australasian Charolais Single-Step BREEDPLAN

	CE Dir	GL	BW	200	400	600	Milk	SS	Carc Wt	EMA	Rump	IMF
EBV	+6.9	-4.8	-0.7	+8	+17	+15	+4	+1.2	+15	+1.8	+1.4	-0.5
Acc	53%	69%	63%	59%	59%	58%	52%	55%	52%	47%	50%	47%



Dam PTIC to Waterford Red Rascal (PP) R/F Joined 27/9/23 to 23/12/23.

LOT  
4

ASCOT  
**NANCEY P77E (AI) (P)**

TATTOO: JAJ P77E  
DOB: 24/09/2018

ASCOT GOLDRUSH G136E (JAJ G136E) (P)  
SIRE: ASCOT GOLDRUSH L87E (JAJ L87E) (P)  
GOBONGO GEORGINA D156E (GO D156E) (P)

LT LEDGER (OAU F3168E) (P)  
DAM: ASCOT NANCEY L31E (JAJ L31E) (P)  
MOONGOOL NANCEY (DP2 A414E)

BARBER DISPERSAL

February 2024 Australasian Charolais Single-Step BREEDPLAN

**CALF COMMENTS:** Thick, soft, stylish and powerful bull calf, ready to wean. **Sire prospect.** Sired by Silverstream Geddes (P). **Calf Tattoo: ZCB U77E**

Charolais	CE Dir	GL	BW	200	400	600	Milk	SS	Carc Wt	EMA	Rump	IMF
EBV	+5.4	-4.4	-2.5	+9	+15	+20	+12	+0.5	+14	+1.4	+2.4	+1.0
Acc	47%	68%	72%	63%	61%	62%	51%	57%	51%	44%	50%	43%

**DAM COMMENTS:** Lovely deep bodied, soft easy doing young cow. Her 2021 heifer offered at Lot 72, her 2022 heifer is Lot 67.

What a pedigree! Dam is a daughter of USA breed legend "Ledger" from a Moongool Female by their leading foundation sire "MV Sundance". P77's sire was an impressive bull used in 4 stud herds.

EBV's are top 15 IMF%, Top 5% Low BW and Fat cover.

Homozygous (PP) Polled



Dam PTIC to Waterford Red Rascal (PP) R/F  
Joined 29/9/23 to 22/12/23.

LOT  
5

GLENLEA  
**ESTELLA 16TH (P)**

TATTOO: GLE Q75E  
DOB: 24/09/2019

RANGAN PARK RIO BRAVO D15 (RAN D15E) (P)  
SIRE: GLENLEA KENWORTH (GLE K80E) (P)  
THW TATT MAC D10E (THW D10E) (P)

IMPAIR (OAF N189F)  
DAM: VALLEY VIEW ESTELLA 416 (VLW H26E) (P)  
PALGROVE ESTELLA 214 (PK A416E) (P)

BARBER DISPERSAL

February 2024 Australasian Charolais Single-Step BREEDPLAN

**CALF COMMENTS:** Classy bull calf ready to wean, expect him to mature into a big strong bull that will be a sale topper or stud sire prospect. Sired by Turnbull's' Duty Free. **Calf Tattoo: ZCB U75E PP Polled by pedigree.**

Charolais	CE Dir	GL	BW	200	400	600	Milk	SS	Carc Wt	EMA	Rump	IMF
EBV	-1.7	-3.1	+0.8	+14	+27	+39	+11	+0.9	+23	+2.2	+0.1	+0.3
Acc	49%	62%	70%	63%	60%	59%	51%	56%	48%	42%	46%	41%

**DAM COMMENTS:** Growth, carcass and maternal strength. Q75 will be the 5th generation of donors in her cow family originating with the Famous Estella 7th. She is maternal sibling to Glenlea Phoenix (PP) R/F who topped our Clermont Bull sale in 2020, 6 of his daughters sell Lots 44 to 49 with calves at foot. Sire is Kenworth, sire of numerous high selling bulls and females. EBV's are at the top of the breed across all growth traits, with good carcass and moderate BW.

DNA Tested Homozygous (PP) Polled



Dam PTIC to Waterford Red Rascal (PP) R/F  
Joined 29/9/23 to 22/12/23.

LOT  
**6**

MAW GLENLEA  
**CHAROL 1ST (AI) (ET) (P)**

TATTOO: MAW R105E  
DOB: 14/09/2020

GERRARD PREACHER 31U (OAC D9989E) (P)  
SIRE: **GERRARD PASTOR 35Z MC347921 (OAC H7921E) (P)**  
GERRARD ROXANNE 18P PFC344620 (PED -4620E)

ROSEDALE DINGA (MR D25E) (P)  
DAM: **GLENLEA CHAROL 72ND (GLE J8E) (P)**  
GLENLEA CAAROL 42ND F37 (GLE F37E) (P)

**BARBER DISPERSAL**

**CALF COMMENTS:** big bull calf, ready to wean. Soft coated bull with extra finish and gentle nature. Sired by WFA / Glenlea Neptune (P)  
**Calf Tattoo: ZCB U105E**

**DAM COMMENTS:** This first calver has put all her effort into her bull calf at side. Full sister to lot 8.

With a dam as strong in type as Charol 72nd and sire with the ability to breed on like Pastor you can buy a female like this with your eyes closed.

EBV's are outstanding with 10 traits above breed average, including all growth traits with moderate BW.



February 2024 Australasian Charolais Single-Step BREEDPLAN

	CE Dir	GL	BW	200	400	600	Milk	SS	Carc Wt	EMA	Rump	IMF
EBV	-6.7	+0.6	+1.1	+15	+23	+40	+8	+0.7	+25	+1.4	-0.4	-0.8
Acc	44%	63%	68%	64%	61%	61%	46%	59%	49%	43%	48%	42%



Homozygous (PP) Polled

Dam joined with Glenlea Louis R305 (P) from 17/2/24 till sale day.

LOT  
**7**

MAW GLENLEA  
**JANET 1ST (AI) (ET) (P) (R/F)**

TATTOO: MAW R106E  
DOB: 14/09/2020

SILVERSTREAM EVOLUTION E168 (OAN E168E) (P)  
SIRE: **SILVERSTREAM HOLSTER H187 (OAN H187E) (P)**  
SILVERSTREAM JILLY E105 (OAN E105E) (P)

VIOLET HILLS WINTON (VHV W74E)  
DAM: **GLENLEA JANET Z8E (GLE Z8E) (P)**  
GLENLEA JANET U6E R/F (GLE U6E) (P)

**BARBER DISPERSAL**

**CALF COMMENTS:** Thick bodied, moderate BW bull ready to wean. More carcass than appears in photo. Sired by Lt Countdown.  
**Calf Tattoo: ZCB U106E**

**DAM COMMENTS:** Thick bodied, good bone, strong polled head. **PLEASE NOTE** all of the females in this sale presented straight out of the paddock with no supplementary feeding.

Dam is Glenlea Janet Z8E, she raised her last natural calf at 16 years. Her lifetime earnings are in excess of \$100,000. Sired by breed legend, Silverstream Holster (P).  
**Led female.**

EBV's above average growth, with added carcass yield is highlighted by the data.



February 2024 Australasian Charolais Single-Step BREEDPLAN

	CE Dir	GL	BW	200	400	600	Milk	SS	Carc Wt	EMA	Rump	IMF
EBV	+0.5	-1.9	+2.0	+13	+21	+30	+2	-0.6	+15	+2.4	-0.4	-0.1
Acc	55%	69%	72%	69%	67%	66%	62%	66%	56%	51%	57%	50%



Dam PTIC to Waterford Red Rascal (PP) R/F Joined 29/9/23 to 22/12/23.

LOT  
8

MAW GLENLEA

# CHAROL 2ND (AI) (ET) (P)

TATTOO: MAW R103E

DOB: 12/09/2020

GERRARD PREACHER 31U (OAC D9989E) (P)

SIRE: GERRARD PASTOR 35Z (OAC H7921E) (P)

GERRARD ROXANNE 18P (PED -4620E)

ROSEDALE DINGA (MR D25E) (P)

DAM: GLENLEA CHAROL 72ND (GLE J8E) (P)

GLENLEA CAAROL 42ND F37 (GLE F37E) (P)

## BARBER DISPERSAL

### February 2024 Australasian Charolais Single-Step BREEDPLAN

**CALF COMMENTS:** Lovely well grown heifer. Ready to wean and break in to show or into the replacement mob. Sired by LT Countdown.

**Calf Tattoo: ZCB U103E PP Polled by pedigree.**

**DAM COMMENTS:** One of 3 E.T. daughters from Glenlea Charol 72nd (PP). Long bodied, growth, carcass with excellent fat cover. Dam is one of Glenlea's most valued donors, producing stud sires and females like R103. Sire Gerrard Pastor is also the sire of Elders Blackjack. Semen not available. We used this sire to add softness and maintain bone, growth and overall power, we think R103 is a great outcome. EBV's are outstanding with 10 traits above breed average, including all growth traits with moderate BW. **Led female.**

Homozygous (PP) Polled



	CE Dir	GL	BW	200	400	600	Milk	SS	Carc Wt	EMA	Rump	IMF
EBV	-8.5	+0.8	+1.3	+16	+27	+44	+7	+1.1	+26	+1.6	+0.3	-0.4
Acc	44%	62%	67%	63%	60%	61%	46%	59%	49%	43%	48%	42%



Dam PTIC to Waterford Red Rascal (PP) R/F  
Joined 29/9/23 to 22/12/23.

Photo taken 2023

LOT  
9

ASCOT

# ISOBELLA P59E (P)

TATTOO: JAJ P59E

DOB: 07/09/2018

LT RIO BRAVO 3181 P (OAU Y5507E) (P)

SIRE: ASCOT GOLDRUSH G136E (JAJ G136E) (P)

PARINGA BLUEGRASS D125 (TOL D125E) (P)

HARVIE REDEMPTION 36P (OAC Z6641E) (P)

DAM: GOBONGO ISABELLA D10E (GO D10E) (P)

GOBONGO ISABELLA (GO T48E)

## BARBER DISPERSAL

### February 2024 Australasian Charolais Single-Step BREEDPLAN

**CALF COMMENTS:** Beautiful heifer ready to wean. class from every angle. Sired by Shandon / Glenlea Qbrick (PP). **Calf Tattoo: ZCB U59E PP Polled by pedigree.**

**DAM COMMENTS:** Great producing cow in her prime! She is a direct daughter of Isabella D10 the dam of Ascot Eldorado, a foundation sire in the Ascot herd, one of the most prominent and highest earning cow families in the breed. Her earnings have started on a high with her 1st bull calf sold at Glenlea's Roma 2022 sale at 16 months for \$15,000 to Hartley Grazing. P59's future earnings will be high and the Glenlea Beef team can assist you in achieving this. Offered at Lot 68 and 69 are her twin daughters from 2022. EBV's Top 5% Fat and IMF%, below average BW.

Homozygous (PP) Polled



	CE Dir	GL	BW	200	400	600	Milk	SS	Carc Wt	EMA	Rump	IMF
EBV	+2.9	-4.1	-0.1	+15	+32	+42	+7	+2.2	+23	+1.9	+2.4	+1.3
Acc	56%	66%	71%	67%	65%	65%	60%	65%	57%	53%	57%	53%



Dam PTIC to Waterford Red Rascal (PP) R/F  
Joined 29/9/23 to 22/12/23.





LOT  
10

VALLEY VIEW

# ESTELLA C14 9E (AI) (ET) (P/S)

TATTOO: VLW J9E

DOB: 02/03/2013

HASTING (OAF M149F)

SIRE: NOVOTEL (OAF S7519F)

DATCHA (PED -1456F)

BR DUKE 261 (OAU C261E) (P)

DAM: PALGROVE ESTELLA 214 (PK A416E) (P)

PALGROVE ESTELLA 73 (PK S201E)

**BARBER DISPERSAL**

**DAM COMMENTS:** This female is a powerful cow, massive volume, carcass and overall yield with great bone and very strong head.

Sired by well-known French sire Novotel. Her dam is from the famous Estella cow family, her 2021 bull calf sold at Glenlea's Roma 2022 sale for \$14,000 at 16 months.

EBV's show top 5% overall beef yield, 15% Milk with moderate BW.

**CALF COMMENTS:** Big, strong, well grown heifer. Sired by Maximum Impact. Ready to wean for the show team or replacement heifer mob. **Calf Tattoo: ZCB U9E**

February 2024 Australasian Charolais Single-Step BREEDPLAN



	CE Dir	GL	BW	200	400	600	Milk	SS	Carc Wt	EMA	Rump	IMF
EBV	+1.6	-3.5	+0.1	+9	+19	+20	+10	+1.1	+15	+2.0	-1.3	-0.4
Acc	59%	72%	70%	63%	62%	62%	59%	58%	54%	48%	51%	46%



Photo taken 2022

Dam PTIC to Waterford Red Rascal (PP) R/F  
Joined 29/9/23 to 22/12/23.



LOT  
11

GLENLEA

# NUNCIATA 121ST (AI) (ET) (P)

TATTOO: GLE Q901E

DOB: 10/05/2019

MERIT VINTAGE 4065P (OAC -414E) (P)

SIRE: CML DISTINCTION 318A (OAC J318E) (P)

TARGET PLD GINNY 40P (OAC Z486E) (P)

PALGROVE DINKUM (PK D1028E) (P)

DAM: ALLEDNAW NUNCIATA G109 (AKT G109E) (P)

ALLEDNAW NUNCIATA C28 (AKT C28E)

**BARBER DISPERSAL**

**DAM COMMENTS:** Great young female, a proven producer. Good frame and bone, feminine and lovely udder. A full E.T. sister sells at lot 52, her 2021 heifer sells at Lot 43.

Sire is a genuine low BW high growth sire who is a trait leader for all growth traits and well below breed average BW. Dam is a Nunciata cow, one of Glenlea's oldest and strongest with this Dam being purchased by Glenlea in 2017 to join their donor herd.

EBV's Top 10% 400 ,600-day weight and carcass weight!

**CALF COMMENTS:** Sire prospect by exclusive sire WFA Glenlea Neptune (P)  
**Calf Tattoo: ZCB U901E**

February 2024 Australasian Charolais Single-Step BREEDPLAN



	CE Dir	GL	BW	200	400	600	Milk	SS	Carc Wt	EMA	Rump	IMF
EBV	+1.1	-0.9	+2.0	+18	+40	+53	+5	+2.2	+32	+0.6	-1.4	-0.1
Acc	45%	64%	70%	63%	63%	63%	48%	56%	52%	40%	51%	37%

**Homozygous (PP) Polled**



Dam PTIC to Waterford Red Rascal (PP) R/F  
Joined 29/9/23 to 22/12/23.



LOT  
12

ASCOT  
**GOLDEN P12E (AI) (P)**

TATTOO: JAJ P12E  
DOB: 05/04/2018

VPI FREE LUNCH 708T (OAU C6773E) (P)  
SIRE: ASCOT KING ARTHUR K44E (JAJ K44E) (P)  
PARINGA RIO D213 F331 (AI) (TOL F331E) (P)

ROSEDALE CASHIER (MR C132E) (P)  
DAM: ASHWOOD PARK GOLDEN (HAS G54E) (P)  
ASHWOOD PARK CINDY (HAS C1E) (P)

BARBER DISPERSAL

February 2024 Australasian Charolais Single-Step BREEDPLAN

**DAM COMMENTS:** Moderate, early maturing, fine hair coat, that has already produced high value progeny. A super Low BW specialist with top 1% of breed milk. Her 2021 yearling son sold for \$19,000 at Glenlea's 2022 Roma bull sale.

EBV's Top 1% for Milk, Rib and Rump Fat, Top 2% for calving ease, Low BW, Top 5% for Gestation length, top 20% EMA and IMF%. Total of 9 traits above breed average.

**CALF COMMENTS:** Early maturing bull calf. Ready to wean. Sired by Silverstream Geddes (P).  
Calf Tattoo: ZCB U12E



	CE Dir	GL	BW	200	400	600	Milk	SS	Carc Wt	EMA	Rump	IMF
EBV	+12.0	-4.9	-3.5	+7	+17	+23	+17	+1.6	+15	+2.0	+5.4	+0.6
Acc	45%	71%	69%	62%	63%	62%	49%	57%	53%	44%	55%	44%

Homozygous (PP) Polled



Dam joined with Glenlea Louis R305 (P) from 17/2/24 till sale day.

LOT  
13

GLENLEA  
**SANDY 8TH (P) (R/F)**

TATTOO: GLE Q61E  
DOB: 16/08/2019

LT VENTURE 3198 (OAU J5612E) (P)  
SIRE: CHALLAMBI MUSCLES (CHA M15E) (P)  
ROSEDALE HIGHNESS G114E (MR G114E) (P)

GLENLEA HONOURABLE (VLW H25E) (P)  
DAM: GLENLEA SANDY 2ND (GLE M70E) (P)  
MULLUM SANDY 2 (BLA D8E) (P)

BARBER DISPERSAL

February 2024 Australasian Charolais Single-Step BREEDPLAN

**DAM COMMENTS:** Another tremendous Glenlea bred female. Length, thickness, perfect udder and that extra softness. Q61's Sire, Muscles has been a fantastic producer, originally selected as a heifer bull, he has out produced himself many times, early maturing, extra carcass and fat cover with Low BW and very strong milking ability in his daughters. Q61 is a **Led female** and would be competitive as senior female in showing.

EBV's show excellent growth well above average and similar for carcass traits, 9 traits above breed average.

**CALF COMMENTS:** Outstanding bull calf, ready to wean. Sired by Shandon / Glenlea Qbrick (PP).  
Calf Tattoo: ZCB U61E



	CE Dir	GL	BW	200	400	600	Milk	SS	Carc Wt	EMA	Rump	IMF
EBV	-7.3	-1.4	+0.2	+17	+33	+41	+7	+0.9	+25	+1.5	+1.3	+0.2
Acc	42%	56%	63%	57%	55%	55%	43%	54%	45%	40%	45%	40%



Dam joined with Glenlea Louis R305 (P) from 17/2/24 till sale day.

LOT  
14

ASCOT  
**LAONIE P65E (AI) (P)**

TATTOO: JAJ P65E  
DOB: 12/09/2018

VPI FREE LUNCH 708T (OAU C6773E) (P)  
SIRE: **PARINGA KILO PACKER K330 (TOL K330E) (P)**  
PARINGA WHITE GOLD H410 (TOL H410E) (P)

ASCOT KINGMAKER K11E (JAJ K11E) (P)  
DAM: **ASCOT LAONIE M84E (JAJ M84E) (P)**  
CRATHES LAONIE 2 (KRG E11E)

**BARBER DISPERSAL**

**DAM COMMENTS:** Moderate, early maturing, perfect udder, extra beef yield, fine hair type, strong head and jaw and a powerhouse producer. Her first yearling son, sired by Glenlea Neptune (P) sold for \$24,000 at the Glenlea Roma bull sale in 2022.

EBV's top 5% of breed for Calving Ease, Gestation, Low BW, Scrotal, Carcass Weight and EMA, Top 15% for 200 and 400 day weight, top 25% for 600 day, Fat Cover and IMF%. In total, 15 out of 16 recorded traits above breed average.

**CALF COMMENTS:** Low BW bull calf, 5 months old in photo. Sired by Shandon / Glenlea Qbrick (PP)  
Calf Tattoo: ZCB U65E



February 2024 Australasian Charolais Single-Step BREEDPLAN

	CE Dir	GL	BW	200	400	600	Milk	SS	Carc Wt	EMA	Rump	IMF
EBV	+10.0	-5.9	-3.0	+15	+29	+36	+8	+2.7	+27	+2.3	+1.6	+0.4
Acc	49%	64%	73%	67%	66%	66%	53%	63%	56%	49%	55%	49%



Dam PTIC to Waterford Red Rascal (PP) R/F  
Joined 29/9/23 to 22/12/23.

LOT  
15

ASCOT  
**P57E (AI) (P)**

TATTOO: JAJ P57E  
DOB: 04/09/2018

LT STAGECOACH 8068 PLD (OAU D7606E) (P)  
SIRE: **LT VENTURE 3198 (OAU J5612E) (P)**  
LT BALLET (OAU E7686E) (P)

PALGROVE HEADLINE (PK H1417E) (P)  
DAM: **ASCOT M34E (JAJ M34E) (P)**  
ASCOT JAJG0120 (JAJ G120E) (P)

**BARBER DISPERSAL**

**DAM COMMENTS:** Excellent cow with growth, softness and milk, lovely fine hair type, and Dam of lot 55.

Sire LT Venture is a very popular sire, known for calving ease and carcass. Her dam has some of the leading cows that formed the foundation of the Ascot herd.

EBV's Top 10% 400 day, 600 day, Milk, carcass weight and Rump fat, with very Low BW. 14 traits above breed average!

**CALF COMMENTS:** Easy doing heifer for the replacement mob. Sired by Shandon / Glenlea Qbrick (PP)  
Calf Tattoo: ZCB U57E



February 2024 Australasian Charolais Single-Step BREEDPLAN

	CE Dir	GL	BW	200	400	600	Milk	SS	Carc Wt	EMA	Rump	IMF
EBV	+5.0	-5.4	-1.8	+17	+39	+46	+12	+3.0	+29	+0.6	+2.3	+0.6
Acc	54%	66%	72%	67%	66%	67%	58%	62%	58%	51%	58%	51%



Dam PTIC to Waterford Red Rascal (PP) R/F  
Joined 29/9/23 to 22/12/23.

LOT  
**16**

GLENLEA  
**REBBY 16TH (P)**

TATTOO: GLE Q41E  
DOB: 10/03/2019

RANGAN PARK REDEMPTION E42 (RAN E42E) (P)  
SIRE: **GLENLEA HONOURABLE (VLW H25E) (P)**  
FERNVALE CHIFFON (FEN C22E)

LHD CIGAR E46 (OAU Q46E) (P)  
DAM: **VALLEY VIEW REBBY CIGAR 14TH (VLW H14E) (P)**  
GOBONGO REBBY D213E (GO D213E) (P)

**BARBER DISPERSAL**

February 2024 Australasian Charolais Single-Step BREEDPLAN

**DAM COMMENTS:** Medium framed, long bodied, good bone, fine hair type, strong polled head and very docile. Her first calf is offered at lot 25 with her Jehu calf in this sale and is an outstanding first calver.

Her sire is Glenlea Honourable, and her dam is the outstanding breeding female Rebbly Cigar 14th. **Led female.**

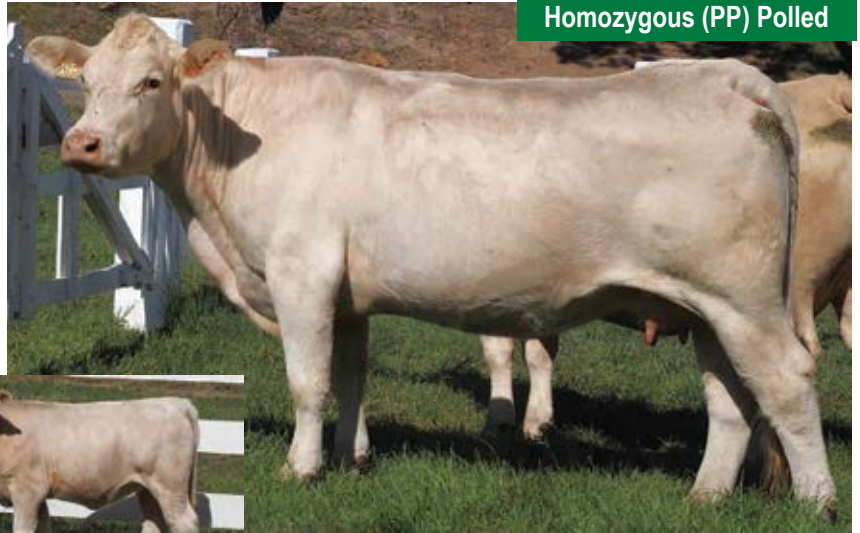
EBV's are above breed average for 200 and 600 day Wt.

**CALF COMMENTS:** Class heifer to wean into your replacement heifer mob. Sired by Shandon / Glenlea Qbrick (PP) **Calf Tattoo: ZCB U41E**



	CE Dir	GL	BW	200	400	600	Milk	SS	Carc Wt	EMA	Rump	IMF
EBV	-13.6	-1.1	+1.6	+14	+20	+30	+3	+0.9	+8	+0.3	-0.6	+0.3
Acc	51%	66%	72%	66%	67%	66%	55%	61%	57%	48%	59%	48%

**Homozygous (PP) Polled**



Dam joined with Glenlea Louis R305 (P) from 17/2/24 till sale day.

LOT  
**17**

WATERFORD  
**LADY GINA L33E (P)**

TATTOO: WET L33E  
DOB: 20/09/2015

PALGROVE CALIBRE S (PK C264E) (P)  
SIRE: **PALGROVE HERMES (PK H549E) (P)**  
PALGROVE ESTELLA 304 (PK E98E) (P)

MOONGOOL YOKEL (DP2 Y218E)  
DAM: **DSK MY GINA D23E (DSK D23E) (P)**  
NANDILLYAN A57E (F A57E) (P)

**BARBER DISPERSAL**

February 2024 Australasian Charolais Single-Step BREEDPLAN

**DAM COMMENTS:** This cow has a show career to envy. Junior Interbreed heifer at Melbourne Charolais feature show in 2016, selling for \$16,000. BEEF 2018 in Rockhampton Reserve Champion Charolais female. Big strong polled cow, great milker, from one of the leading cows in the Waterford Stud. **Led female. S**

he has 3 daughters in the sale, lot 3, 51 and 80, in addition to her calf at foot.

**CALF COMMENTS:** Quality heifer to join your replacement mob and / or show team. Sired by exclusive sire WFA Glenlea Neptune (P). **Calf Tattoo: ZCB U33E**



	CE Dir	GL	BW	200	400	600	Milk	SS	Carc Wt	EMA	Rump	IMF
EBV	+3.8	-0.5	+0.3	+10	+15	+24	+5	+1.3	+11	+0.1	+0.6	-0.3
Acc	48%	63%	68%	63%	64%	63%	52%	57%	55%	45%	51%	44%



Dam PTIC to Waterford Red Rascal (PP) R/F Joined 29/9/23 to 22/12/23

LOT  
18

# CHARNELLE DREAMGIRL 7 (AI) (ET)

TATTOO: GKA J5F  
DOB: 28/01/2013

ORGANDI 16867 M 16867 (ZZF X2116F)  
SIRE: AGA KHAN 58693 A38 (IAF A6019F)  
PERLE F 68788 (ZZF X757F)

LAVERA ETERNITY (LAV X20F)  
DAM: RIVERVIEW ANGEL (RIV A16F)  
PALGROVE DREAM GIRL 13 (PK W374F)

## BARBER DISPERSAL

### February 2024 Australasian Charolais Single-Step BREEDPLAN

**DAM COMMENTS:** Matron of the herd, Full French, big strong cow, bone, frame and large strong feet, strong attractive head and jaw, from a very well-known cow family, sire is a breed legend with nearly 2700 registered progeny spanning 5 decades! Noted for his calving ease, maternal strength, Fine hair type and high yield carcasses and larger EMA. This female is a clear candidate for an E.T. program. Her 2020 daughter, big strong maximum performance heifer is offered in this sale at Lot 41. EBV's above average growth with good mature weight with above average EMA and Beef Yield (Carcass Yield) in top 1% of the breed.

**CALF COMMENTS:** Stylish polled heifer. Sired by Shandon / Glenlea Qbrick (PP) **Calf Tattoo: ZCB U5E**



	CE Dir	GL	BW	200	400	600	Milk	SS	Carc Wt	EMA	Rump	IMF
EBV	-4.4	+2.4	+2.7	+11	+17	+27	+7	+0.4	+16	+1.5	-2.7	-0.2
Acc	59%	62%	68%	64%	64%	64%	64%	59%	58%	47%	47%	44%



Dam joined with Glenlea Louis R305 (P) from 17/2/24 till sale day 26/04/24.

LOT  
19

# GLENLEA NOLANA 121ST (P)

TATTOO: GLE Q54E  
DOB: 30/04/2019

LT VENTURE 3198 (OAU J5612E) (P)  
SIRE: CHALLAMBI MUSCLES (CHA M15E) (P)  
ROSEDALE HIGHNESS G114E (MR G114E) (P)

RANGAN PARK RIO BRAVO D15 (RAN D15E) (P)  
DAM: GLENLEA NOLANA 94TH (GLE L28E) (P)  
GLENLEA NOLANA 33RD (GLE C66E) (P)

## BARBER DISPERSAL

### February 2024 Australasian Charolais Single-Step BREEDPLAN

**DAM COMMENTS:** Moderate framed, feminine young cow with perfect udder, fine hair type, attractive polled head.

Sired by Reference Sire Muscles, and out of another great Glenlea cow family, the Nolana's. Q54 has her first calf in this sale at Lot 26, first calver with a Jehu calf at foot and lovely "S" drop heifer that is an impressive type.

EBV's Top 5% all growth traits, Carcass Wt, Milk. Top 10% EMA. Top 15% Rib and Rump Fat and BW. Total 12 traits above breed average.

**CALF COMMENTS:** Extra soft, easy doing heifer ready wean. Sired by Silverstream Geddes.  
**Calf Tattoo: ZCB U54E**



	CE Dir	GL	BW	200	400	600	Milk	SS	Carc Wt	EMA	Rump	IMF
EBV	-4.7	-2.9	-0.3	+17	+35	+40	+10	+1.8	+27	+2.0	+2.2	+0.3
Acc	45%	60%	66%	61%	61%	60%	46%	57%	51%	43%	53%	43%



Homozygous (PP) Polled

Dam joined with Glenlea Louis R305 (P) from 17/2/24 till sale day.

LOT  
20

GLENLEA  
**ELSA 118TH (P) (R/F)**

TATTOO: GLE R25E  
DOB: 25/05/2020

RANGAN PARK REDEMPTION E42 (RAN E42E) (P)  
SIRE: **GLENLEA JUST RED (GLE J5E) (P)**  
GLENLEA JANET U6E R/F (GLE U6E) (P)

LITTLE VALLEY GRANDIOSE (GKB G5E) (P)  
DAM: **ORARA WATERFALL GLENLEA ELSA 3RD (WFA M39E) (P)**  
GLENLEA ELSA G24E (GLE G24E) (P)

**COMMENTS:** A rare Glenlea Elsa. Deep bodied, easy doing, extra fat cover, structurally very sound, good bone and great udder. Her 1st daughter by "Muscles" retained. This young cow, is one we really thought twice about offering, but wanted to offer some special females in this sale direct from Glenlea Beef. **Led Female.**

EBV's top 15% growth, all well above average carcass traits, 10 traits above average in total. A total Red package with calf at foot.

**CALF COMMENTS:** Outstanding Red heifer calf at foot by "Rover" one of our new sire's purchased for sale high of \$24,000 in 2022 at Southern breeders' sale, VIC from Challambi. **Show prospect! Ready to wean. PP Polled by pedigree.** Calf Tattoo: ZCB U164E



February 2024 Australasian Charolais Single-Step BREEDPLAN

	CE Dir	GL	BW	200	400	600	Milk	SS	Carc Wt	EMA	Rump	IMF
EBV	-8.5	-1.6	+1.4	+16	+33	+49	+9	+0.2	+26	+1.8	+0.8	+0.9
Acc	43%	56%	67%	56%	54%	54%	42%	54%	44%	40%	44%	39%



Homozygous (PP) Polled



Dam PTIC to Waterford Red Rascal (PP) R/F  
NEW SIRE! Due October / November 2024.

LOT  
21

GLENLEA  
**ADWANA 7TH (AI) (ET) (P)**

TATTOO: GLE Q903E  
DOB: 05/05/2019

MD ALI TRADE U1059 (PED D1059E) (P)  
SIRE: **WINN MANS SKAGGS 663X (OAC F663E) (P)**  
WINN MANS BEVERLY 663S (PED B663E)

RANGAN PARK RIO BRAVO D15 (RAN D15E) (P)  
DAM: **GLENLEA ADAWNA 1ST (GLE K63E) (P)**  
MIXHILL ADAWNA (MIX A455E)

**COMMENTS:** One of our very few Skaggs daughters, so easy doing, with loads of Fat cover, volume and early maturity. Our Adwana cow family originates from now dispersed Gobongo herd, and is one of our most special. Very hard to offer this female also, but a really special one direct from Glenlea's heart of the herd. Her 2022 daughter retained by "Kowboy". **Led Female.**

EBV's growth traits all above average with all positive carcass traits.

**CALF COMMENTS:** Bull calf at foot HAS BEEN WEANED. Low BW. Potential stud heifer bull. Sired by Shandon / Glenlea Qbrick (pictured). **PP Polled by pedigree.** Video available prior to sale. Calf Tattoo: ZCB U164E



February 2024 Australasian Charolais Single-Step BREEDPLAN

	CE Dir	GL	BW	200	400	600	Milk	SS	Carc Wt	EMA	Rump	IMF
EBV	+4.4	-2.8	+0.0	+14	+24	+32	+9	+1.9	+18	+1.3	+0.6	+0.0
Acc	48%	65%	70%	67%	64%	63%	57%	64%	54%	49%	58%	48%



Homozygous (PP) Polled



Dam PTIC to Torrie Lodge Rascal (PP)  
POWERFUL NEW SIRE! Due September 2024.

LOT  
22

GLENLEA  
**CHAROL 130TH (P)**

TATTOO: GLE R31E  
DOB: 28/06/2020

SILVERSTREAM HOLSTER H187 (OAN H187E) (P)  
SIRE: **GLENLEA PISTOL (GLE P55E) (P)**  
VALLEY VIEW REBBY BRAVO 17TH (VLW J1E) (P)

PALGROVE JUSTICE (PK J603E) (P)  
DAM: **ALLEDNAW CAROL P82 (AKT P82E) (P)**  
ALLEDNAW CAROL H29E (AKT H29E) (P)

**COMMENTS:** One of our most gentle young cows, just such a quiet female. Hard to offer her for sale as she is a favorite for her docility. Early maturing, great carcass, lovely strong polled head. Like the previous two lots, all are **Led females** and Homozygous Polled. 2022 Daughter retained by "Fargo". Glenlea has retained 1st daughters from all these 3 lots - 20, 21 and 22.

EBV's reflect her early maturity and extra overall yield (Top 15%) and well above average EMA.

**CALF COMMENTS:** Show prospect heifer by our NEW SIRE sire Challambi Rover (PP) R/F. Ready to wean. **PP Polled by pedigree.**  
Calf Tattoo:



February 2024 Australasian Charolais Single-Step BREEDPLAN

	CE Dir	GL	BW	200	400	600	Milk	SS	Carc Wt	EMA	Rump	IMF
EBV	+1.7	-4.9	-0.1	+9	+16	+14	+1	+0.7	+14	+2.0	-0.7	-0.6
Acc	43%	60%	66%	63%	62%	58%	49%	57%	51%	44%	56%	44%



**Homozygous (PP) Polled**



Dam PTIC to Glenlea Honorable P80 (P) R/F.  
Guaranteed Red Factor polled calf. Due Oct/Nov 2024

LOT  
23

GLENLEA  
**BOP BOP 5TH (P)**

TATTOO: GLE R73E  
DOB: 27/10/2020

RANGAN PARK RIO BRAVO D15 (RAN D15E) (P)  
SIRE: **GLENLEA KENWORTH (GLE K80E) (P)**  
THW TATT MAC D10E (THW D10E) (P)

CHARNELLE LOUIS (GKA L73E) (P)  
DAM: **GLENLEA BOP BOP 4TH (GLE P27E) (P)**  
ORARA WATERFALL GLENLEA BOP BOP 1ST (WFA L44E) (P)

**COMMENTS:** Early maturing, moderate framed, big carcass female. 1st calf from a Louis daughter out of donor dam Bop Bop L44. BOP BOP 5th sired by Kenworth, a bull whose progeny just don't miss regardless of the cow he is joined to. She picked herself to be offered in this sale with for her outstanding heifer calf at side!

EBV's 10 traits above average, including all growth and carcass traits, with moderate BW.

**CALF COMMENTS:** Such a thick, early maturing, easy doing heifer calf. Sired by our calving ease specialist MAW / Glenlea Ashwood (PP). Straight into the replacement mob. Ready to wean.  
Calf Tattoo: **ZCB U187E**



February 2024 Australasian Charolais Single-Step BREEDPLAN

	CE Dir	GL	BW	200	400	600	Milk	SS	Carc Wt	EMA	Rump	IMF
EBV	-5.7	-3.2	+1.0	+12	+23	+29	+6	+1.4	+17	+2.1	+1.2	+0.6
Acc	41%	55%	65%	59%	55%	54%	43%	52%	43%	37%	42%	36%



Dam PTIC to Torrie Lodge Rascal (PP)  
Will be a powerful combination! Due October 2024.

LOT  
**23A**

MAW  
**FESTOON 1ST (AI) (P)**

TATTOO: MAW S60E  
DOB: 02/07/2021

LT SUNDANCE 2251 (PED H2251E) (P)  
SIRE: LT VISTA 5319 (OAU L5319E) (P)  
LT ATHENA 2040 (PED H2040E) (P)

PARINGA MANTRA M354 (TOL M354E) (P)  
DAM: PALGROVE FESTOON P940E (PK P940E) (P)  
PALGROVE FESTOON L368E (PK L368E) (AI) (P)

**BARBER DISPERSAL**

February 2024 Australasian Charolais Single-Step BREEDPLAN

**DAM COMMENTS:** Moderate framed, and early maturing, good carcass with softness and eye appeal. The first calf from Lot 39, P940, which gives you a window into this heifer's future as her dam has her third calf at foot and is breeding great progeny. S60's sire is a Low BW specialist LT Vista, a trait leader for Low BW, doability and softness a feature of his progeny. This female had a C-section birth with her first calf.

EBV's Top 10% gestation length and IMF%, Top 15% Rib and Rump Fat and Milk, Top 20% 400 day wt and Low BW. Total 10 traits better than breed average.

**CALF COMMENTS:** Powerful carcass heifer calf ready to wean. Sired by WFA / Glenlea Neptune (P)  
Calf Tattoo: ZCB U60E



	CE Dir	GL	BW	200	400	600	Milk	SS	Carc Wt	EMA	Rump	IMF
EBV	-5.5	-3.1	-0.5	+14	+42	+39	+12	+1.4	+29	+1.3	+1.7	+0.5
Acc	49%	72%	73%	70%	68%	65%	49%	68%	52%	47%	55%	46%



**Homozygous (PP) Polled**



Dam joined with Glenlea Louis R305E (P) from 17/2/24 till sale day 26/04/24.

LOT  
**24**

MAW  
**MARY 1ST (P)**

TATTOO: MAW S2E  
DOB: 02/03/2021

LT LEDGER 0332 (OAU F3168E) (P)  
SIRE: RANGAN LEDGER N100 (RAN N100E) (P)  
RANGAN PARK SHOWGIRL C29 (RAN C29E) (P)

PARINGA LINKED IN L410 (TOL L410E) (P)  
DAM: ASCOT MARY P16E (JAJ P16E) (P)  
ASCOT M7E (JAJ M7E) (P)

**BARBER DISPERSAL**

February 2024 Australasian Charolais Single-Step BREEDPLAN

**DAM COMMENTS:** Long bodied and good frame, nice udder, fine hair type. Doing a great job of her long bodied well-muscled bull calf at side.

Dam was a lovely, neat, easy doing Ascot bred cow.

EBV's Top 10% for IMF% and Scrotal. Top 15% Gestation length and Low BW. Top 20% Milk. Top 25% 200,400, 600-day growth, and Rump Fat. Total 13 traits better than breed average.

**CALF COMMENTS:** Long bodied growthy calf showing good carcass. Sired by SCX JEHU.  
Calf Tattoo: ZCB V2E  
PP Polled by pedigree.



	CE Dir	GL	BW	200	400	600	Milk	SS	Carc Wt	EMA	Rump	IMF
EBV	+3.2	-5.6	-1.1	+18	+37	+44	+9	+3.2	+28	+1.3	+1.7	+0.7
Acc	39%	60%	62%	58%	56%	54%	44%	56%	45%	42%	47%	41%





LOT  
25

MAW  
**REBBY 1ST (P)**

TATTOO: MAW S41E  
DOB: 25/08/2021

LT VENTURE 3198 (OAU J5612E) (P)  
SIRE: **CHALLAMBI MUSCLES (CHA M15E) (P)**  
ROSEDALE HIGHNESS G114E (MR G114E) (P)

GLENLEA HONOURABLE (VLW H25E) (P)  
DAM: **GLENLEA REBBY 16TH (GLE Q41E) (P)**  
VALLEY VIEW REBBY CIGAR 14TH (VLW H14E) (P)

**BARBER DISPERSAL**

**DAM COMMENTS:** A classy first calver. Length, good udder, easy doing with a very bull calf at foot.

Her dam is offered at Lot 16 in this sale. The Rebbys are a very prominent cow family with the dam and grand dam of S41 powerful breeding females, and S41 will be the same.

EBV's Top 25% 200-, 400- and 600-day weight. Total 10 traits better than breed average.

**CALF COMMENTS:** Well-muscled polled bull calf at foot. Sired by SCX JEHU.  
**Calf Tattoo: ZCB U41E**



February 2024 Australasian Charolais Single-Step BREEDPLAN

	CE Dir	GL	BW	200	400	600	Milk	SS	Carc Wt	EMA	Rump	IMF
EBV	-3.9	-3.6	-1.1	+15	+26	+33	+7	+1.4	+18	+0.8	+1.0	+0.1
Acc	43%	60%	64%	60%	58%	58%	46%	56%	47%	42%	49%	42%



Dam joined with Taylor / Glenlea  
The Wind Maker T8 (P) 17/2/24 to 26/4/24

LOT  
26

MAW  
**NOLANA 1ST (P)**

TATTOO: MAW S54E  
DOB: 15/08/2021

LT VENTURE 3198 (OAU J5612E) (P)  
SIRE: **CHALLAMBI MUSCLES (CHA M15E) (P)**  
ROSEDALE HIGHNESS G114E (MR G114E) (P)

CHALLAMBI MUSCLES (CHA M15E) (P)  
DAM: **GLENLEA NOLANA 121ST (GLE Q54E) (P)**  
GLENLEA NOLANA 94TH (GLE L28E) (P)

**BARBER DISPERSAL**

**DAM COMMENTS:** Stylish, thick and easy doing.

Dam is offered at Lot 19 from the "Nolana" cow family, a cow family with 40+ years of history in the Glenlea herd.

EBV's Top 5% Carcass Wt. Top 10% 200,400 and 600-day Growth, Milk, Rib and Rump Fat, Scrotal. Top 15% EMA. Top 25% Low BW and gestation length. Total of 12 traits better than breed average.

**CALF COMMENTS:** Heifer calf at foot. Sired by SCX JEHU.  
**Calf Tattoo: ZCB V6E**  
**PP Polled by pedigree.**



February 2024 Australasian Charolais Single-Step BREEDPLAN

	CE Dir	GL	BW	200	400	600	Milk	SS	Carc Wt	EMA	Rump	IMF
EBV	-1.1	-3.5	-1.7	+17	+34	+39	+11	+1.8	+28	+1.7	+2.4	+0.1
Acc	44%	61%	66%	62%	60%	60%	46%	59%	49%	44%	51%	44%



**Homozygous (PP) Polled**

Dam joined with Taylor / Glenlea  
The Wind Maker T8 (P) 17/2/24 to 26/4/24

LOT  
27

MAW  
**SANDY 1ST (P) (R/F)**

TATTOO: MAW S61E  
DOB: 12/11/2021

LT VENTURE 3198 (OAU J5612E) (P)  
**SIRE: CHALLAMBI MUSCLES (CHA M15E) (P)**  
ROSEDALE HIGHNESS G114E (MR G114E) (P)

CHALLAMBI MUSCLES (CHA M15E) (P)  
**DAM: GLENLEA SANDY 8TH (GLE Q61E) (P)**  
GLENLEA SANDY 2ND (GLE M70E) (P)

**BARBER DISPERSAL**

**DAM COMMENTS:** A Red Factor heifer to complete the offering of 1st calvers with JEHU calves at foot.

This heifer the first calf from Lot 13. Extra length, fine hair coat, and several months younger than the lots.

EBV's Top 10% Carcass Wt. Top 15% 200,400- and 600-day growth. Top 20% Milk, Low BW.

**CALF COMMENTS:** Bull calf improving, showing good carcass after being sick when first born. Sired by SCX JEHU (P)  
**Calf Tattoo: ZCB V11E**

Video of S61 and calf will be available prior to sale on AuctionsPlus.



February 2024 Australasian Charolais Single-Step BREEDPLAN

	CE Dir	GL	BW	200	400	600	Milk	SS	Carc Wt	EMA	Rump	IMF
EBV	-3.7	-2.3	-1.1	+17	+34	+42	+10	+1.3	+27	+1.5	+1.9	+0.1
Acc	44%	61%	65%	61%	59%	59%	46%	58%	48%	44%	49%	43%

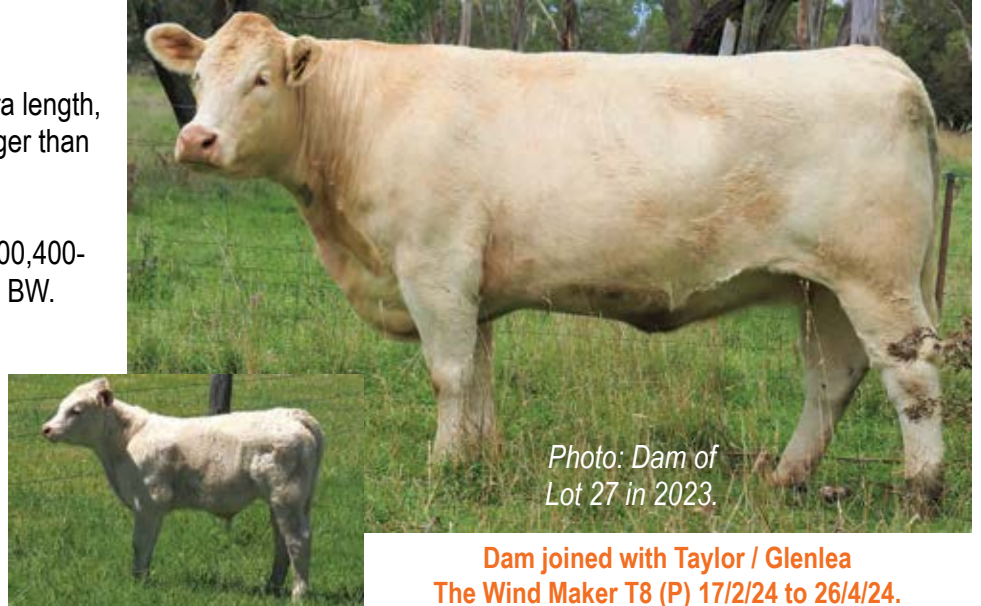


Photo: Dam of Lot 27 in 2023.

**Dam joined with Taylor / Glenlea The Wind Maker T8 (P) 17/2/24 to 26/4/24.**

LOT  
28

GLENLEA  
**CHAROL 115TH (P) (R/F)**

TATTOO: GLE Q22E  
DOB: 05/02/2019

GALLWAY - RS (OAF G1063F) (P)  
**SIRE: CHARNELLE LOUIS (GKA L73E) (P)**  
CHARNELLE ELLE (GKA E10E) (P)

RANGAN PARK RIO BRAVO D15 (RAN D15E) (P)  
**DAM: GLENLEA CHAROL 78TH (GLE J15E) (P)**  
GLENLEA CAAROL 38TH R/F (PS) (GLE C51E) (P/S)

**BARBER DISPERSAL**

**DAM COMMENTS:** Another outstanding red factor, polled, Glenlea bred female. Length, easy finishing, thickness and eye appeal.

Sire is the great breeding bull Louis, with nearly 150 registered progeny in 16 stud herds across Australia. Dam is a been a great producer, a daughter of multi trait leading sire Rio D15.

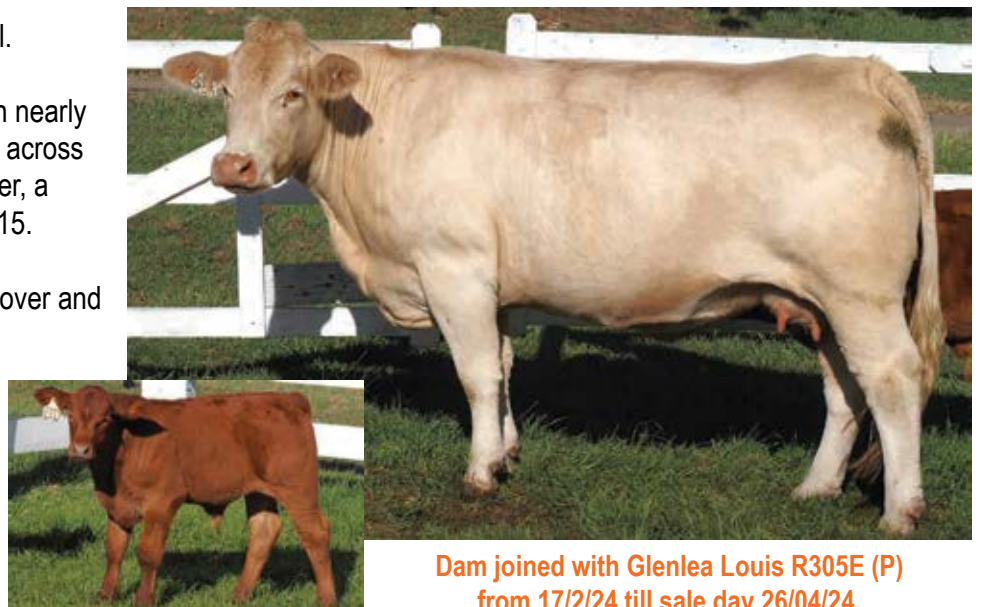
EBV's Top 10% for Rib and Rump Fat Cover and IMF%. Top 25% for EMA.

**CALF COMMENTS:** Sire prospect bull calf. Double red. Ideal to breed black composite bulls. Should breed 99% apricot progeny out of white cows. Sired by Glenlea Just Red (PP) R/F  
**Calf Tattoo: ZCB U22E**



February 2024 Australasian Charolais Single-Step BREEDPLAN

	CE Dir	GL	BW	200	400	600	Milk	SS	Carc Wt	EMA	Rump	IMF
EBV	-6.1	-3.4	+0.8	+7	+18	+21	+8	+1.4	+12	+2.2	+1.8	+0.7
Acc	47%	58%	71%	58%	60%	59%	47%	56%	49%	41%	52%	42%



**Dam joined with Glenlea Louis R305E (P) from 17/2/24 till sale day 26/04/24.**

LOT  
29

GLENLEA  
**NUNCIATA 115TH (P) (R/F)**

TATTOO: GLE Q4E  
DOB: 10/01/2019

LT VENTURE 3198 (OAU J5612E) (P)  
SIRE: **CHALLAMBI MUSCLES (CHA M15E) (P)**  
ROSEDALE HIGHNESS G114E (MR G114E) (P)

VERNOLA JUST RIGHT J6E (VIW J6E) (P/S)  
DAM: **ALLEDNAW NUNCIATA M63E (AKT M63E)**  
ALLEDNAW NUNCIATA G109 (AKT G109E) (P)

**BARBER DISPERSAL**

**DAM COMMENTS:** Medium framed, very docile, extra carcass yield, fine hair type, ideal beef udder and plenty of performance.

Sired by reference sire Muscles out of a cow from one of Glenlea's oldest and most prominent cow families. Q4 is the 115th Nunciata and will create an established cow family for her purchaser.

EBV's Top 15% 400- and 600-day growth and Carcass Wt. Top 25% EMA with below breed average BW. Total of 14 out of 16 recorded traits above breed average.

**CALF COMMENTS:** Sire prospect bull calf. Sired by Glenlea Just Red (PP) R/F  
Calf Tattoo: **ZCB U4E**

February 2024 Australasian Charolais Single-Step BREEDPLAN

	CE Dir	GL	BW	200	400	600	Milk	SS	Carc Wt	EMA	Rump	IMF
EBV	+1.2	-2.8	+0.4	+18	+38	+51	+10	+1.7	+31	+1.9	+0.6	+0.0
Acc	41%	55%	64%	59%	58%	58%	45%	55%	48%	40%	45%	40%



Dam joined with Glenlea Louis R305E (P) from 17/2/24 till sale day.

LOT  
30

GLENLEA  
**JANET 121ST (P) (R/F)**

TATTOO: GLE Q43E  
DOB: 15/03/2019

RANGAN PARK REDEMPTION E42 (RAN E42E) (P)  
SIRE: **GLENLEA HONOURABLE (VLW H25E) (P)**  
FERNVALE CHIFFON (FEN C22E)

VIOLET HILLS WINTON (VHV W74E)  
DAM: **GLENLEA JANET Z8E (GLE Z8E) (P)**  
GLENLEA JANET U6E R/F (GLE U6E) (P)

**BARBER DISPERSAL**

**COMMENTS:** One of the gentlest females in the sale. Early maturing, moderate framed, polled and dark red, so should breed apricot progeny when joined to a white sire.

Sire is very well-known impact sire, Glenlea Honorable. Dam Janet Z8 is a donor cow that has produced over \$100,000 in progeny and embryos sales.

EBV's reflect her early maturity and extra overall carcass yield.

**CALF COMMENTS:** Early maturing dark red bull calf. Sired by Glenlea Just Red (PP) R/F  
Calf Tattoo: **ZCB V43E**

February 2024 Australasian Charolais Single-Step BREEDPLAN

	CE Dir	GL	BW	200	400	600	Milk	SS	Carc Wt	EMA	Rump	IMF
EBV	-10.5	+0.6	+2.0	+11	+20	+30	+2	+0.1	+13	+1.0	-0.7	+0.4
Acc	50%	63%	72%	62%	65%	63%	53%	59%	55%	47%	59%	47%



Dam joined with Glenlea Louis R305E (P) from 17/2/24 to 26/04/24

LOT  
31

GLENLEA  
**ADAWNA 7TH (P) (R/F)**

TATTOO: GLE Q2E  
DOB: 02/01/2019

LT VENTURE 3198 (OAU J5612E) (P)  
SIRE: **CHALLAMBI MUSCLES (CHA M15E) (P)**  
ROSEDALE HIGHNESS G114E (MR G114E) (P)

GLENLEA JUST RED (GLE J5E) (P)  
DAM: **GLENLEA ADAWNA 5TH (GLE M106E) (P)**  
MIXHILL ADAWNA (MIX A455E)

**BARBER DISPERSAL**

February 2024 Australasian Charolais Single-Step BREEDPLAN

**DAM COMMENTS:** One of the standout females in the sale, and there are many! Bomb proof temperament, easy doing, easy finishing, perfect udder, fine hair coat, strong polled head and muzzle. Sire is one of Glenlea's best producing sires in last few years. Dam is an impressive cow family with a maternal sister selling for \$16,000 at 15months of age in 2022. **Led and been shown as Heifer.** Excellent earning potential, Q2 first bull calf sold for \$20,000 at 16 months at Glenlea's Roma 2022 bull sale.

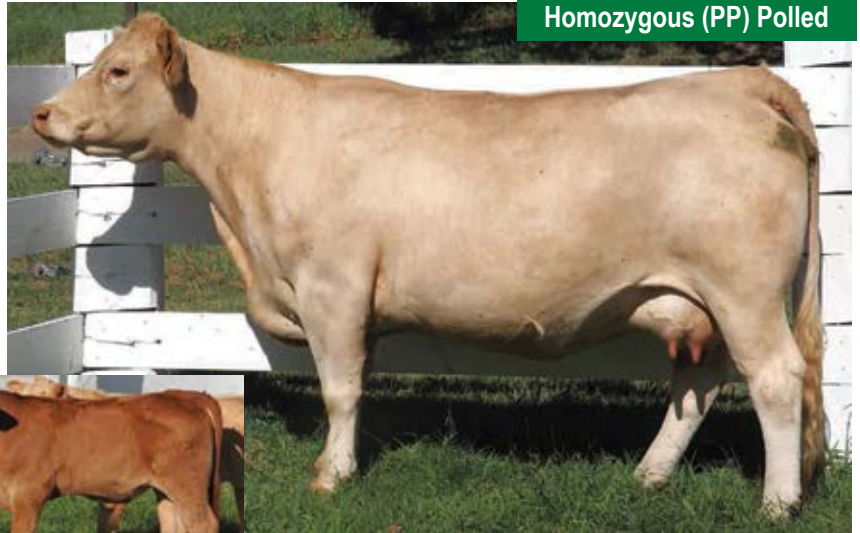
EBV's above average all growth traits, and fat cover, 11 traits in total above breed average.

**CALF COMMENTS:** Dark red sire prospect. Sired by Glenlea Just Red (PP) R/F Calf Tattoo: **ZCB V1E**



	CE Dir	GL	BW	200	400	600	Milk	SS	Carc Wt	EMA	Rump	IMF
EBV	-2.4	-2.7	-0.4	+17	+33	+44	+11	+1.4	+26	+1.2	+1.4	+0.2
Acc	42%	54%	66%	58%	57%	57%	44%	54%	47%	40%	45%	39%

**Homozygous (PP) Polled**



Dam joined with Glenlea Louis R305E (P) from 17/2/24 till 26/4/24.

LOT  
31A

HUON  
**YVONNE 2 (P)**

TATTOO: DG1 N27E  
DOB: 19/03/2017

MERIT ROUNDUP 9508W (OAC E6558E) (P)  
SIRE: **RANGAN ROUNDUP K18 (RAN K18E) (P)**  
RANGAN PARK ALETTA H57 (RAN H57E) (P)

RANGAN PARK PERFORMER E30 (RAN E30E) (AI) (ET) (H)  
DAM: **HUON YVONNE (DG1 K14E) (H)**  
ASH-LIN YVONNE (ACW B1E) (AI) (D)

**BARBER DISPERSAL**

February 2024 Australasian Charolais Single-Step BREEDPLAN

**DAM COMMENTS:** Big strong polled cow! Deep bodied, easy finishing and great udder. Her 2021 bull sold as a Yearling at our 2022 Casino sale for \$10,000. Her sire was a high selling bull in 2016, with 142 registered progeny and is a trait leader for 400- and 600-day weight. Dam is by a powerful son of Silverstream Performer.

EBV's Top 5% 400, 600-day weight, scrotal and carcass weight, top 15% EMA all with moderate BW.

**CALF COMMENTS:** Well grown, great carcass with fine hair type, easy to sell red factor polled bull calf. Note some white on tail, not visible in photo. Sired by Glenlea Just Red (PP) R/F. Born 4/1/24. Calf Tattoo: **ZCB V4E**



	CE Dir	GL	BW	200	400	600	Milk	SS	Carc Wt	EMA	Rump	IMF
EBV	+1.9	-2.2	+0.3	+12	+37	+50	+9	+2.7	+33	+2.1	-1.9	0.0
Acc	46%	65%	72%	65%	63%	62%	47%	60%	50%	42%	49%	42%



Dam joined with Glenlea Louis R305E (P) from 17/2/24 till 26/4/24.

LOT  
32

HUON  
**ESTELLA 17 (P)**

TATTOO: DG1 N23E  
DOB: 14/03/2017

MERIT ROUNDUP 9508W (OAC E6558E) (P)  
**SIRE: RANGAN ROUNDUP K18 (RAN K18E) (P)**  
RANGAN PARK ALETTA H57 (RAN H57E) (P)

FERNVALE ZIG ZAG (FEN Z128E) (P)  
**DAM: HUON ESTELLA F3 (DG1 F3E)**  
THW ESTELLA 32 CIGAR (THW D13E) (P)

**BARBER DISPERSAL**

February 2024 Australasian Charolais Single-Step BREEDPLAN

**DAM COMMENTS:** Big strong, deep bodied, polled cow, perfect udder, great milker, doing a great job on her calf.

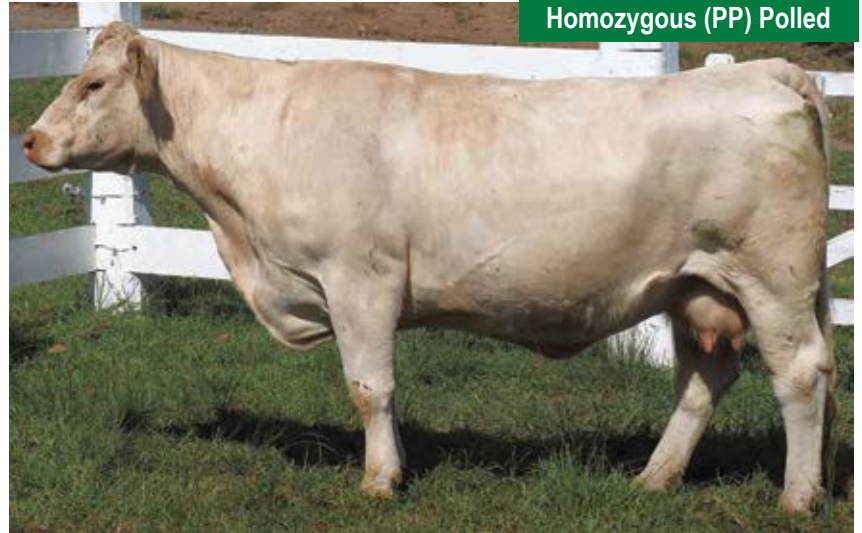
Sire has nearly 150 registered progeny, is a trait leader for 400, 600 day weight and scrotal. Dam is another Estella, totally proven genetics.

EBV's Top 15% 400-day growth. Top 20% 200- and 600-day growth. Moderate BW. Total 8 Traits above breed average. Her 2022 heifer offered at Lot 83.

**CALF COMMENTS:** Well shaped bull calf. Sired by Glenlea Just Red (PP). **PP Polled by pedigree.**  
**Calf Tattoo: ZCB 23U23E**



	CE Dir	GL	BW	200	400	600	Milk	SS	Carc Wt	EMA	Rump	IMF
EBV	-2.3	-3.8	+1.0	+16	+33	+39	+2	+2.2	+22	+1.5	-0.7	-0.2
Acc	47%	56%	71%	61%	59%	60%	47%	54%	49%	40%	46%	39%



**Homozygous (PP) Polled**

**Dam joined with Glenlea Louis R305E (P) from 17/2/24 till sale day 26/04/24.**

LOT  
33

ASCOT  
**ESTELLA N81E (AI) (P)**

TATTOO: JAJ N81E  
DOB: 04/10/2017

VPI FREE LUNCH 708T (OAU C6773E) (P)  
**SIRE: ASCOT LIQUID GOLD L7E (JAJ L7E) (P)**  
PARINGA WHITE GOLD H372 (TOL H372E)

ASCOT ELDORADO (JAJ E14E) (P)  
**DAM: ASCOT ESTELLA L84E (JAJ L84E) (P)**  
PALGROVE ESTELLA 291 (PK D870E) (P)

**BARBER DISPERSAL**

February 2024 Australasian Charolais Single-Step BREEDPLAN

**DAM COMMENTS:** N81 has extra growth across the growth curve, early maturing cow, fine hair type and easy finishing. Dam is another from the Estella cow Family, this time from Ascot's Leading Donor. Her 2021 bull calf sold for \$12,000 at Glenlea's 2022 Roma bull sale.

EBV's Top 2% 200-day growth. Top 5% Rib and Rump Fat, Carcass Wt and Gestation Length. Top 10% 400 and 600 day growth and EMA. Total of 14 out of 16 recorded Traits above breed average.

**CALF COMMENTS:** Moderate BW, well-shaped bull. Sired by Glenlea Just Red (PP). **Calf Tattoo: ZCB V3E**



	CE Dir	GL	BW	200	400	600	Milk	SS	Carc Wt	EMA	Rump	IMF
EBV	+3.4	-5.5	-1.4	+17	+28	+36	+9	+1.3	+24	+2.5	+3.0	+0.5
Acc	46%	74%	71%	65%	67%	65%	52%	60%	57%	49%	61%	50%



**Homozygous (PP) Polled**



**Dam joined with Glenlea Louis R305E (P) from 17/2/24 till sale day.**



**GLE R32E**

Full sibling to embryos in Lot 101.



**Lot 31 GLE Q2E**

Photo taken in 2021.  
Age 2 years



**Lot 62 GLE Q10E**

Photo taken in 2020. Age 12 months.  
She was Champion Female at the  
Charnelle invitational sale in 2020.



**Lot 34 GLE K60E**

Photo taken in 2021.  
Age 7 years



**GLE J8E**

Donor and Dam of Lots 6, 7, 35A & 53.



**Lot 13 GLE Q61E**

Age 11 months

LOT  
34

GLENLEA  
**ISABELLA 1ST (P) (R/F)**

TATTOO: GLE K60E  
DOB: 07/09/2014

LT RIO BRAVO 3181 P (OAU Y5507E) (P)  
**SIRE: RANGAN PARK RIO BRAVO D15 (RAN D15E) (P)**  
PALGROVE SHOW GIRL 6 (PK P82E) (P)

HARVIE REDEMPTION 36P (OAC Z6641E) (P)  
**DAM: GOBONGO ISABELLA D86E (GO D86E) (P)**  
GOBONGO ISABELLA (GO T48E)

**BARBER DISPERSAL**

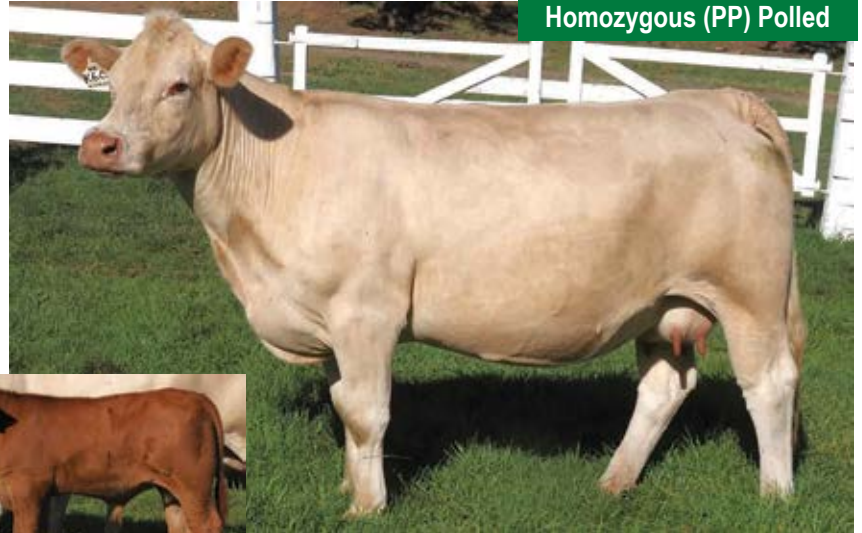
February 2024 Australasian Charolais Single-Step BREEDPLAN

**DAM COMMENTS:** A mature cow with a tremendous production record. Sire is one of Glenlea's most valued sire's, RIO D15, with nearly 300 registered progeny. Trait leader for all growth traits, Milk, EMA, Rib and Rump Fat, IMF% and Carcass Wt, an impact sire in every way. Her dam is from one of Australia's best known and highest earning cow families with 29 registered progeny currently. Full sister, Lot 60 Isabella 2nd. A son GLE R16E, sold as a yearling at Glenlea's 2021 Clermont Bull sale for \$12,000. Her 2017 daughter was top price yearling heifer at Glenlea's Drought Buster female sale in 2019. EBV's Top 1% IMF, Top 5% Milk, EMA, Rib and Rump Fat. Top 20% Low BW. Total of 10 traits above breed average.

**CALF COMMENTS:** Sire prospect bull calf, double bred red. Sired by Glenlea Just Red (PP). **Calf Tattoo: ZCB V5E**  
**PP Polled by pedigree.**



	CE Dir	GL	BW	200	400	600	Milk	SS	Carc Wt	EMA	Rump	IMF
EBV	+0.0	-2.2	-0.6	+11	+22	+27	+12	+1.3	+16	+1.9	+2.1	+1.5
Acc	60%	66%	78%	68%	68%	68%	62%	68%	58%	52%	56%	51%



**Homozygous (PP) Polled**



**Dam joined with Glenlea Louis R305E (P) from 17/2/24 till sale day.**

LOT  
35

HUON  
**BARONIA 11 (P)**

TATTOO: DG1 N44E  
DOB: 30/03/2017

MERIT ROUNDUP 9508W (OAC E6558E) (P)  
**SIRE: RANGAN ROUNDUP K18 (RAN K18E) (P)**  
RANGAN PARK ALETTA H57 (RAN H57E) (P)

RANGAN PARK PERFORMER E30 (RAN E30E)  
**DAM: HUON BARONIA 2 (DG1 J40E) (P)**  
GOBONGO BARONIA (GO U18E)

**BARBER DISPERSAL**

February 2024 Australasian Charolais Single-Step BREEDPLAN

**DAM COMMENTS:** Big deep bodied female, great udder, fine coated.

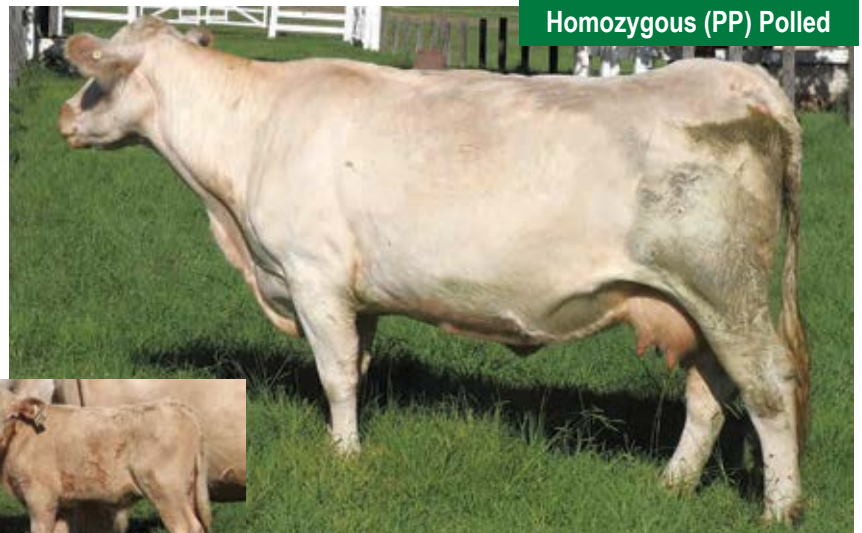
Sire Roundup K18 same as Lot 32, Dam is a powerful granddaughter of Silverstream Performer out of a great Gobongo Cow family.

EBV's Top 2% Beef Yield, Top 20% 200-, 400- and 600-day growth, EMA, Carcass Wt. Total 10 traits above breed average.

**CALF COMMENTS:** Growthy bull calf. Sire prospect. Sired by Glenlea Just Red (PP). **Calf Tattoo: ZCB V14E**  
**PP Polled by pedigree.**



	CE Dir	GL	BW	200	400	600	Milk	SS	Carc Wt	EMA	Rump	IMF
EBV	+0.8	-3.8	+0.6	+16	+29	+42	+2	+2.3	+25	+2.2	-1.8	-0.2
Acc	46%	51%	72%	61%	60%	60%	45%	51%	49%	40%	46%	40%



**Homozygous (PP) Polled**



**Dam joined with Glenlea Louis R305E (P) from 17/2/24 till sale day.**

LOT  
**35A**

GLENLEA  
**CHAROL 114TH (P)**

TATTOO: GLE Q19E  
DOB: 08/02/2019

BRANCH VIEW HOWLER (BVC H118E) (P)  
SIRE: **PARINGA HOWLER M344 (TOL M344E) (P)**  
PARINGA REDEMPTION G437 (TOL G437E) (AI) (P)

ROSEDALE DINGA (MR D25E) (P)  
DAM: **GLENLEA CHAROL 72ND (GLE J8E) (P)**  
GLENLEA CAAROL 42ND F37 (GLE F37E) (P)

**BARBER DISPERSAL**

February 2024 Australasian Charolais Single-Step BREEDPLAN

**DAM COMMENTS:** This female is one of 4 daughters out of Donor Dam Glenlea Charol 72nd (PP) in the sale. Long bodied, exhibiting the extra carcass yield of her Dam, fine hair coat, perfect udder, attractive strong polled head.

Her sire, Paringa Howler was used in the Glenlea Herd leaving 62 registered progeny and a good number of highly productive daughters.

EBV's Top 10% all growth traits and Carcass Wt. Total of 10 traits above breed average.

**Led female.**

**CALF COMMENTS:** Lovely deep apricot heifer calf. Sired by Glenlea Just Red (PP) (R/F) **Calf Tattoo: ZCB V13E**



	CE Dir	GL	BW	200	400	600	Milk	SS	Carc Wt	EMA	Rump	IMF
EBV	+2.8	-0.9	+1.8	+19	+33	+50	0	+1.2	+26	+1.4	+0.6	0.0
Acc	40%	59%	72%	63%	65%	64%	39%	61%	52%	44%	57%	45%



**Homozygous (PP) Polled**



**Dam joined with Glenlea Louis R305E (P) from 17/2/24 till sale day.**

LOT  
**36**

GLENLEA  
**ISABELLA 12TH (P)**

TATTOO: GLE Q55E  
DOB: 17/06/2019

GALLWAY - RS (OAF G1063F) (P)  
SIRE: **CHARNELLE LOUIS (GKA L73E) (P)**  
CHARNELLE ELLE (GKA E10E) (P)

RANGAN PARK RIO BRAVO D15 (RAN D15E) (P)  
DAM: **GLENLEA ISABELLA 2ND (GLE L22E) (P)**  
GOBONGO ISABELLA D86E (GO D86E) (P)

**BARBER DISPERSAL**

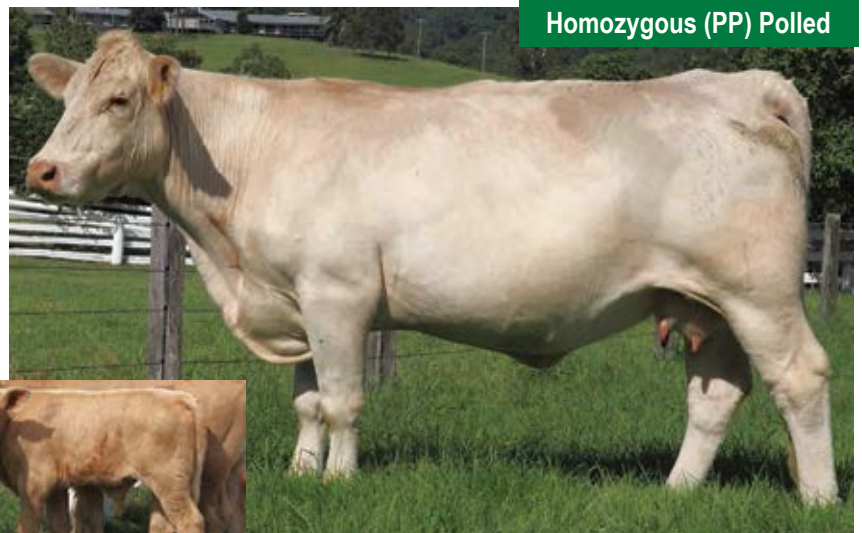
February 2024 Australasian Charolais Single-Step BREEDPLAN

**DAM COMMENTS:** Another very well bred Glenlea prefixed young cow. Long and deep bodied, fine hair type, excellent udder, medium framed, very docile. Her 2021 heifer sells at lot 42. Her sire, Charnelle Louis (PP), a resident sire at Glenlea has been an outstanding breeding bull, over 150 registered progeny in 16 stud herds across Australia. His carcass data is breed leading. Dam is Lot 60 in this sale, Glenlea Isabella 2nd (P) the Dam of Australia's highest priced charolais female in 2021, making Q55 a maternal sister. EBV's Top 5% EMA, Rib and Rump Fat and IMF%. Top 15% Milk.  
**Led female.**

**CALF COMMENTS:** Moderate BW, docile bull calf. Sired by Glenlea Just Red (PP) (R/F) **Calf Tattoo: ZCB V9E**  
**PP Polled by pedigree.**



	CE Dir	GL	BW	200	400	600	Milk	SS	Carc Wt	EMA	Rump	IMF
EBV	-5.2	-4.2	-0.5	+7	+18	+17	+8	+1.3	+12	+2.7	+2.6	+0.8
Acc	48%	64%	70%	64%	63%	63%	51%	60%	51%	43%	49%	42%



**Homozygous (PP) Polled**



**Dam joined with Glenlea Louis R305E (P) from 17/2/24 till sale day.**



LOT  
37

DSK  
**CRUSTY L70 P6E (AI) (P) (R/F)**

TATTOO: DSK P6E  
DOB: 05/04/2018

CCR SURESHOT 1107F7 ET (OAU R1107E) (P)  
SIRE: VENTURON CRUSTY DEMON (VE7 C5E) (P)  
LINKLETTER A7E (LJA A7E)

TEMANA GOLDEN LOGIE G66E (TJ G66E) (P)  
DAM: DSK TGL B43 L70E (DSK L70E) (P)  
DSK EXP B43EB H42E (DSK H42E) (P)

BARBER DISPERSAL

**DAM COMMENTS:** A big framed, powerful bodied, polled red factor cow, with perfect udder, fine hair type and great bone. Selected from the DSK dispersal in 2021 by Rod Binny as the pick of the 1st calvers to add to this herd. Her calf at foot at that sale, a horned bull, sold for \$12,000 at Glenlea's 2022 Roma bull sale. Sire is the very well known Gold Logie, with many high selling and champion progeny, Dam is from one of the leading cow families in the DSK herd.

EBV's Top 20% 600 day growth and Milk. Total of 9 traits above breed average.

**CALF COMMENTS:** One of the best heifer calves in the sale. Sired by Glenlea Just Red (PP).  
Calf Tattoo: ZCB V8E



February 2024 Australasian Charolais Single-Step BREEDPLAN

	CE Dir	GL	BW	200	400	600	Milk	SS	Carc Wt	EMA	Rump	IMF
EBV	+0.0	-4.4	+1.0	+13	+26	+45	+11	+1.4	+16	+0.5	+1.9	+0.7
Acc	47%	71%	70%	64%	63%	63%	54%	59%	52%	46%	53%	46%



Dam joined with Glenlea Louis R305E (P) from 17/2/24 till sale day 26/04/24.

LOT  
38

ASCOT  
**P56E (AI) (P)**

TATTOO: JAJ P56E  
DOB: 03/09/2018

LT STAGECOACH 8068 PLD (OAU D7606E) (P)  
SIRE: LT VENTURE 3198 M835612 (OAU J5612E) (P)  
LT BALLET 9219 (OAU E7686E) (P)

PALGROVE HEADLINE (PK H1417E) (P)  
DAM: ASCOT M69E (JAJ M69E) (P)  
ASCOT JAJG0072 (JAJ G72E) (P)

BARBER DISPERSAL

**DAM COMMENTS:** Outstanding young cow, type, performance, very docile with length, carcass and finish.

Sire is well known imported sire, LT Venture and very few his daughters are offered for sale, Dam is a from the same cow family that produced many stud sires for Ascot, including Goldrush and Governor General.

EBV's Top 5% all growth traits, Carcass Wt, Rib and Rump Fat and IMF%. Total of 13 traits above breed average.

**CALF COMMENTS:** Sire prospect bull calf. Sired by Glenlea Just Red (PP).  
Calf Tattoo: ZCB V15E



February 2024 Australasian Charolais Single-Step BREEDPLAN

	CE Dir	GL	BW	200	400	600	Milk	SS	Carc Wt	EMA	Rump	IMF
EBV	+0.0	-4.2	-0.6	+19	+43	+51	+10	+2.8	+32	+1.4	+3.2	+0.8
Acc	55%	65%	71%	66%	64%	65%	59%	63%	56%	51%	58%	51%



Dam joined with Glenlea Louis R305E (P) from 17/2/24 till sale day 26/04/24.

LOT  
39

PALGROVE  
**FESTOON P940E (P)**

TATTOO: PK P940E  
DOB: 28/08/2018

PARINGA HARVEY H338 (TOL H338E) (P)  
SIRE: **PARINGA MANTRA M354 (TOL M354E) (P)**  
PARINGA WHITE GOLD H410 (TOL H410E) (P)

SILVERSTREAM HOLSTER H187 (OAN H187E) (P)  
DAM: **PALGROVE FESTOON L368E (PK L368E) (P)**  
PALGROVE FESTOON 213 (PK D797E)

**BARBER DISPERSAL**

**DAM COMMENTS:** Big volumed, high yielding, perfect uddered Palgrove female with her third calf at side. Selected at the 2021 Palgrove sale by Rod Binny from Glenlea as his pick of the joined heifers. Her 2021 heifer by LT Vista sells at lot 23A. Sire is a high performance, trait leading sire for all growth traits with over 100 registered progeny at Palgrove. Dam is an outstanding Holster daughter from the Festoon cow family, very proven genetics.

EBV's are outstanding. Top 10% for all growth traits, top 15% EMA, 11 traits above breed average.

**CALF COMMENTS:** Great type with carcass and eye appeal. Sired by Glenlea Just Red (PP) (R/F)  
Calf Tattoo: **ZCB V17E**



February 2024 Australasian Charolais Single-Step BREEDPLAN

	CE Dir	GL	BW	200	400	600	Milk	SS	Carc Wt	EMA	Rump	IMF
EBV	-5.5	-3.7	+1.9	+18	+41	+48	+11	+1.0	+29	+2.8	+0.3	+0.6
Acc	49%	67%	72%	72%	69%	65%	58%	68%	55%	50%	56%	49%



Dam joined with Glenlea Louis R305E (P) from 17/2/24 till 26/4/24.

LOT  
40

DSK  
**VCD REFINE L49E (AI) (P)**

TATTOO: DSK L49E  
DOB: 03/09/2015

CCR SURESHOT 1107F7 ET (OAU R1107E) (P)  
SIRE: **VENTURON CRUSTY DEMON (VE7 C5E) (P)**  
LINKLETTER A7E (LJAA7E)

CS PLD JUNCTION 4J (OAC U8742E) (P)  
DAM: **DSK PJ REFINE J88E (DSK J88E) (P)**  
MOONGOOL REFINE 17 (DP2 Z210E)

**BARBER DISPERSAL**

**DAM COMMENTS:** Big strong polled cow, performance, fine coat. Very well-known high earning cow family that was selected from the DSK dispersal in 2021 by Rod Binny to add to this herd's Donor program. Her heifer calf was a standout and was later sold as a show prospect heifer to S.A. for \$6000 at 11 months old.  
**Registered Donor.** This cow was flushed for 10 A grade embryos in 2021.

Sire is a leading performance sire in W.A.

EBV's Top 10% 600-day growth. Top 20% 400-day growth and Milk.

**CALF COMMENTS:** Will calve prior to sale. Sired by Glenlea Just Red (PP) (R/F). Calf will be **PP Polled by pedigree.**



February 2024 Australasian Charolais Single-Step BREEDPLAN

	CE Dir	GL	BW	200	400	600	Milk	SS	Carc Wt	EMA	Rump	IMF
EBV	-8.9	-2.2	+1.2	+10	+23	+37	+10	+1.6	+14	+0.8	+1.4	+0.4
Acc	48%	73%	69%	65%	63%	69%	54%	60%	58%	48%	61%	49%



Homozygous (PP) Polled

LOT  
**41**

MILFORD  
**DREAMGIRL (P)**

TATTOO: JOH R42E  
DOB: 05/03/2020

MOONGOOL GENERAL (DP2 G695E) (P)  
SIRE: **PALGROVE LEADER L204E (PK L204E) (P/S)**  
PALGROVE PANACHE 262 (PK F730E)

AGA KHAN 58693 A38 (IAF A6019F)  
DAM: **CHARNELLE DREAMGIRL 7 (GKA J5F)**  
RIVERVIEW ANGEL (RIV A16F)

**BARBER DISPERSAL**

**DAM COMMENTS:** Big strong heifer, maximum performance female, length, carcass, and softness will be an outstanding breeder.

Sire is a performance bull leaving standout progeny, Dam is offered at Lot 18, big strong Full French cow.

EBV's Top 15% EMA and Beef Yield, above breed average in all growth traits. total of 8 traits above breed average.

**CALF COMMENTS:** Due to calve prior to sale. Sired by Shandon / Glenlea Qbrick (PP)



February 2024 Australasian Charolais Single-Step BREEDPLAN

	CE Dir	GL	BW	200	400	600	Milk	SS	Carc Wt	EMA	Rump	IMF
EBV	-7.2	+2.8	+4.2	+19	+35	+52	+8	+0.3	+32	+2.9	-1.7	-0.3
Acc	41%	52%	66%	56%	52%	52%	46%	50%	44%	38%	42%	37%



LOT  
**42**

MAW  
**ISABELLA 2ND (P)**

TATTOO: MAW S55E  
DOB: 16/08/2021

LT VENTURE 3198 (OAU J5612E) (P)  
SIRE: **CHALLAMBI MUSCLES (CHA M15E) (P)**  
ROSEDALE HIGHNESS G114E (MR G114E) (P)

CHARNELLE LOUIS (GKA L73E) (P)  
DAM: **GLENLEA ISABELLA 12TH (GLE Q55E) (P)**  
GLENLEA ISABELLA 2ND (GLE L22E) (P)

**BARBER DISPERSAL**

**DAM COMMENTS:** Another easy doing 1st calver with good carcass, extra fat cover and strong maternal data.

The first calf from lot 36 and she is an Isabella! These heifers will produce leading progeny into the 2030's!

EBV's Top 5% Rib and Rump Fat. Top 10% EMA and Milk. Total of 12 traits better than breed average.

**Homozygous (PP) Polled**

**CALF COMMENTS:** Due to calve prior to sale. Sired by Shandon / Glenlea Qbrick (PP)



February 2024 Australasian Charolais Single-Step BREEDPLAN

	CE Dir	GL	BW	200	400	600	Milk	SS	Carc Wt	EMA	Rump	IMF
EBV	-1.6	-4.5	-2.0	+10	+23	+22	+11	+1.4	+17	+2.0	+2.6	+0.4
Acc	40%	56%	62%	59%	57%	60%	44%	56%	49%	41%	47%	40%



Photo of Dam Glenlea Isabella 12th from 2023.

LOT  
43

MAW  
**NUNCIATA 1ST (P)**

TATTOO: MAW S901E  
DOB: 25/09/2021

LT VENTURE 3198 (OAU J5612E) (P)  
SIRE: **CHALLAMBI MUSCLES (CHA M15E) (P)**  
ROSEDALE HIGHNESS G114E (MR G114E) (P)

CML DISTINCTION 318A (OAC J318E) (P)  
DAM: **GLENLEA NUNCIATA 121ST (GLE Q901E) (P)**  
ALLEDNAW NUNCIATA G109 (AKT G109E) (P)

**BARBER DISPERSAL**

**DAM COMMENTS:** This beautiful heifer S901 is the first calf of Lot 11. Her cow family, the Nunciata's is one of Glenlea's oldest and most prolific. Glenlea purchased this heifer's grand dam in 2017 knowing the strength of the cow family and put her straight into a E.T. program. Barber's breeding program has followed the Glenlea ethos aiming for growth, doability, carcass, maternal strength and maintaining calving ease, backed by data, S901 is a great example.

EBV's Top 15% all growth traits, Carcass Wt and Scrotal. Top 25% Low BW and Milk. Total of 12 traits better than breed average.

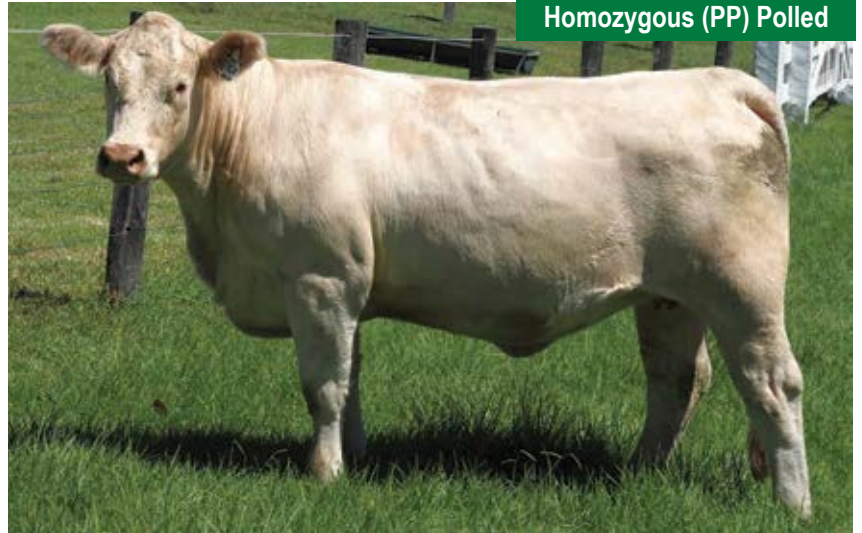
**CALF COMMENTS:** Will calve prior to sale. Sired by Shandon / Glenlea Qbrick (PP).



February 2024 Australasian Charolais Single-Step BREEDPLAN

	CE Dir	GL	BW	200	400	600	Milk	SS	Carc Wt	EMA	Rump	IMF
EBV	+1.4	-2.7	-0.2	+20	+41	+53	+8	+2.2	+33	+1.1	+0.5	-0.1
Acc	39%	56%	61%	58%	57%	60%	43%	54%	49%	40%	47%	39%

**Homozygous (PP) Polled**



LOT  
44

GLENLEA  
**LESLIE 8TH (P) (R/F)**

TATTOO: GLE S318E  
DOB: 30/07/2021

GLENLEA JUST RED (GLE J5E) (P)  
SIRE: **GLENLEA PHEONIX (GLE P41E) (P)**  
VALLEY VIEW ESTELLA 416 (VLW H26E) (P)

GLENLEA HI GUY (GLE H52E) (P)  
DAM: **ORARA WATERFALL LESLIE (WFA L5E) (P)**  
VALLEY VIEW GC DC (VLW G44E) (P)

**COMMENTS:** Classy 1st calver with a power packed pedigree. These next six females have been on lighter coastal country, separate to all other lots, no supplementation and will explode going west or onto heavier coastal country, genuine performance females to breed high value progeny, backed up by data.

Maternal sister to the reference sire Louis R305 that sold in 2022 for \$32,000. Length, plenty of carcass to breed high selling sons, fine coated.

EBV's top 5% growth, total 12 traits above breed average.

**CALF COMMENTS:** Sire prospect red polled bull calf. 2 months in photo.  
**Calf Tattoo: ZCB V307E**



February 2024 Australasian Charolais Single-Step BREEDPLAN

	CE Dir	GL	BW	200	400	600	Milk	SS	Carc Wt	EMA	Rump	IMF
EBV	-12.2	-2	3.1	20	41	61	8	1.3	31	2.2	0.3	0.5
Acc	35%	51%	57%	52%	51%	49%	34%	53%	40%	37%	40%	36%



**Dam offered ready to join.**

LOT  
45

GLENLEA  
**ELSA 75TH (P)**

TATTOO: GLE S346E  
DOB: 22/09/2021

GLENLEA JUST RED (GLE J5E) (P)  
SIRE: **GLENLEA PHEONIX (GLE P41E) (P)**  
VALLEY VIEW ESTELLA 416 (VLW H26E) (P)

BRANCH VIEW FORDGED FROM STEEL (BVC F34E) (P)  
DAM: **GLENLEA ELSA 66TH (GLE L217E) (P)**  
GLENLEA ELSA U7E R/F (GLE U7E)

**COMMENTS:** Performance 1st calver. All six lots from 44 to 49 are sired by Pheonix and will put growth through genetics and milking ability into their progeny. Lovely docile female with carcass and fine hair type.

EBV's well above average growth, with amazing carcass data, top 1% EMA and IMF% with top 15% fat cover. 12 traits above breed average.

**CALF COMMENTS:** Beautiful heifer calf at foot. 2 months in photo. **PP Polled by pedigree.**  
Calf Tattoo: ZCB V308E



February 2024 Australasian Charolais Single-Step BREEDPLAN

	CE Dir	GL	BW	200	400	600	Milk	SS	Carc Wt	EMA	Rump	IMF
EBV	-3.2	-1.5	1.6	15	30	42	6	1	24	2.2	0	0.2
Acc	35%	52%	58%	54%	52%	50%	40%	52%	41%	37%	40%	35%

**Homozygous (PP) Polled**



Dam offered ready to join.

LOT  
46

GLENLEA  
**JENNY 3RD (P) (R/F)**

TATTOO: GLE S323E  
DOB: 6/08/2021

GLENLEA JUST RED (GLE J5E) (P)  
SIRE: **GLENLEA PHEONIX (GLE P41E) (P)**  
VALLEY VIEW ESTELLA 416 (VLW H26E) (P)

GLENLEA JIMMY (GLE J4E) (P)  
DAM: **GLENLEA JENNY 1ST (GLE M33E) (P)**  
JACKSON JENNY (MEJ J4E) (P)

**COMMENTS:** What a line up of red factor, polled 1st calvers that anyone would be proud to have in their paddock. We are showcasing the Pheonix daughters' class in this group of six. Dam is a lovely soft cow that has sold sons to \$14,000.

EBV's Top 5% for all growth traits and IMF%, top 10% fat cover, 11 traits above breed average.

**CALF COMMENTS:** Replacement red polled heifer if ever we saw one. 5 weeks in photo.  
Calf Tattoo: ZCB V311E



February 2024 Australasian Charolais Single-Step BREEDPLAN

	CE Dir	GL	BW	200	400	600	Milk	SS	Carc Wt	EMA	Rump	IMF
EBV	-2.7	-2.4	0.3	16	36	48	11	1.8	28	1.8	1.5	0.6
Acc	36%	52%	65%	54%	52%	50%	37%	53%	41%	38%	41%	37%



Dam offered ready to join.

LOT  
47

GLENLEA  
**GEMMA 9TH (P) (R/F)**

TATTOO: GLE S326E  
DOB: 10/08/2021

GLENLEA JUST RED (GLE J5E) (P)  
SIRE: **GLENLEA PHEONIX (GLE P41E) (P)**  
VALLEY VIEW ESTELLA 416 (VLW H26E) (P)

ROSEDALE DINGA (MR D25E) (P)  
DAM: **ORARA WATERFALL GLENLEA GEMMA 1ST (WFA K7E) (P)**  
JACKSON GEMMA (MEJ G8E) (P)

**COMMENTS:** The 4th red polled 1st calver by "Pheonix" in a row - quality in numbers is just part of what Glenlea Beef offers! Dam is a granddaughter of Glenlea Big Gun, and exhibits the extra carcass yield that he has, very potent sire, semen offered at Lot 105.

EBV's Top 1% carcass yield and carcass weight, Top 5% all growth Traits, with above average EMA. 9 traits above breed average.

**CALF COMMENTS:** Beautiful shaped, soft polled heifer, lovely nature. 2 months in photo.  
**Calf Tattoo: ZCB V303E**



February 2024 Australasian Charolais Single-Step BREEDPLAN

	CE Dir	GL	BW	200	400	600	Milk	SS	Carc Wt	EMA	Rump	IMF
EBV	-3.9	-1.6	1.5	19	36	53	9	1.2	31	2.2	-0.7	-0.2
Acc	37%	51%	67%	52%	51%	50%	35%	51%	40%	36%	40%	35%



Dam offered ready to join.

LOT  
48

GLENLEA  
**KARANA 5TH (P) (R/F)**

TATTOO: GLE S328E  
DOB: 12/08/2021

GLENLEA JUST RED (GLE J5E) (P)  
SIRE: **GLENLEA PHEONIX (GLE P41E) (P)**  
VALLEY VIEW ESTELLA 416 (VLW H26E) (P)

GLENLEA HILTON (GLE H30E) (P)  
DAM: **GLENLEA KARANA 2ND (GLE M250E) (P/S)**  
GOBONGO KARANA E376E (GO E376E)

**COMMENTS:** Big strong 1st calver, videos available on Auction Plus before sale. S326 is white in colour, good bone and length. Dam is from a Gobongo cow family and has had sons sell up to \$12,000.

EBV's are top 5%, for all growth, EMA and Beef yield and above breed average Fat cover. 10 traits above breed average

**CALF COMMENTS:** Long bodied, high growth polled heifer calf. 2 months in photo.  
**Calf Tattoo: ZCB V309E**



February 2024 Australasian Charolais Single-Step BREEDPLAN

	CE Dir	GL	BW	200	400	600	Milk	SS	Carc Wt	EMA	Rump	IMF
EBV	-9	-0.3	2.8	21	39	62	7	1.1	32	2.3	-0.6	0.1
Acc	36%	53%	67%	54%	52%	51%	36%	55%	41%	38%	42%	37%



Photo: Sire of Dam

Dam offered ready to join.

LOT  
49

# GLENLEA GC DC 4TH (P)

TATTOO: GLE S327E

DOB: 11/08/2021

GLENLEA JUST RED (GLE J5E) (P)

SIRE: GLENLEA PHEONIX (GLE P41E) (P)

VALLEY VIEW ESTELLA 416 (VLW H26E) (P)

CLARINDA DOUBLE (KEN F7E) (P)

DAM: GLENLEA GC DC 2ND (GLE M219E) (P)

VALLEY VIEW GC DC (VLW G44E) (P)

### February 2024 Australasian Charolais Single-Step BREEDPLAN



	CE Dir	GL	BW	200	400	600	Milk	SS	Carc Wt	EMA	Rump	IMF
EBV	-2.8	-2.9	0.7	15	33	45	9	0.5	26	2	1.2	0.6
Acc	34%	49%	65%	51%	49%	47%	33%	51%	39%	35%	39%	34%

**COMMENTS:** More moderate framed Pheonix daughter out of a really early maturing cow that has extra finish, and Low BW. Almost tropical skin type and loose hide, perfect udder like them all. Outstanding 1st calver with a lifetime of production ahead of her. Her dam has 5 calves in 5 years all born within 3 weeks of each, great fertility.

EBV's at top 15% growth, well above average in EMA, Fat Cover and IMF%. 12 traits above breed average!

**CALF COMMENTS:** Lovely white soft heifer. 2 months in photo.  
**PP Polled by pedigree.**  
 Calf Tattoo: ZCB V305E



Dam offered ready to join.



Top price yearling Bull at our Clermont 2023 sale.  
 A Challambi Muscles son who sold for \$11,500

LOT  
50

ASCOT  
**P62E (AI) (P)**

TATTOO: JAJ P62E  
DOB: 10/09/2018

LT STAGECOACH 8068 PLD (OAU D7606E) (P)  
SIRE: LT VENTURE 3198 (OAU J5612E) (P)  
LT BALLET (OAU E7686E) (P)  
PALGROVE HEADLINE (PK H1417E) (P)  
DAM: ASCOT M39E (JAJ M39E) (P)  
ASCOT JAJG0080 (JAJ G80E) (P)



BARBER DISPERSAL

February 2024 Australasian Charolais Single-Step BREEDPLAN						
	CE Dir	GL	BW	200	400	600
EBV	+0.7	-4.9	-1.5	+15	+32	+41
Acc	54%	64%	71%	66%	64%	65%
	Milk	SS	Carc Wt	EMA	Rump	IMF
EBV	+13	+2.7	+26	+1.4	+4.3	+0.9
Acc	56%	59%	56%	51%	57%	50%

**COMMENTS:** A lovely daughter of LT Venture, out of one Ascot's most prolific cow families. Early maturing, great carcass, fine hair and strong maternal traits. Has produced two excellent sale bulls to date, and her calf to Red Rascal should be her best yet. EBV's Top 5% Rib and Rump Fat, Top 10% 200, 400, 600 day growth and Carcass Wt. Top 15% Milk and IMF%. Total of 14 traits better than breed average.

PTIC to Waterford Red Rascal (PP) R/F joined 27/9/23 to 23/12/23.

LOT  
51

MAW  
**LADY GINA 1ST (AI) (P)**

TATTOO: MAW R2E  
DOB: 11/03/2020

SILVERSTREAM FOCUS F6 (PED F6E)  
SIRE: SILVERSTREAM LANDIS L179 (OAN L179E) (P)  
SILVERSTREAM DASHER H104 (OAN H104E) (P)  
PALGROVE HERMES (PK H549E) (P)  
DAM: WATERFORD LADY GINA L33E (WET L33E) (P)  
DSK MY GINA D23E (DSK D23E) (P)



BARBER DISPERSAL

February 2024 Australasian Charolais Single-Step BREEDPLAN						
	CE Dir	GL	BW	200	400	600
EBV	+0.5	-2.5	+1.2	+14	+22	+31
Acc	46%	62%	66%	64%	62%	62%
	Milk	SS	Carc Wt	EMA	Rump	IMF
EBV	+7	+1.0	+17	+1.3	+1.5	+0.2
Acc	52%	60%	52%	45%	50%	44%

**COMMENTS:** Maternal sister to Lot 3, same extra length of body, docility, fine hair coat, good bone and medium to larger framed. Dam is Lot 17 an outstanding cow, breeding outstanding daughters like this one. EBV's all above average growth and carcass traits with total of 9 traits above breed average.

PTIC to Waterford Red Rascal (PP) R/F joined 27/9/23 to 23/12/23.

LOT  
52

MAW GLENLEA  
**NUNCIATA 1ST (AI) (ET) (P) (R/F)**

TATTOO: MAW R102E  
DOB: 11/09/2020

MERIT VINTAGE 4065P (OAC -414E) (P)  
SIRE: CML DISTINCTION 318A (OAC J318E) (P)  
TARGET PLD GINNY 40P (OAC Z486E) (P)  
PALGROVE DINKUM (PK D1028E) (P)  
DAM: ALLEDNAW NUNCIATA G109 (AKT G109E) (P)  
ALLEDNAW NUNCIATA C28 (AKT C28E)



BARBER DISPERSAL

February 2024 Australasian Charolais Single-Step BREEDPLAN						
	CE Dir	GL	BW	200	400	600
EBV	+1.2	-0.8	+2.1	+16	+34	+42
Acc	43%	63%	69%	64%	61%	61%
	Milk	SS	Carc Wt	EMA	Rump	IMF
EBV	+3	+1.6	+24	-0.4	-2.0	-0.1
Acc	49%	58%	48%	40%	45%	39%

**COMMENTS:** Growth, fine coated, great bone, carcass and strong maternal traits. Dam has been a great producer, from another of Glenlea's oldest cow families. Sire is a growth trait leader in the breed with nearly 100 registered progeny and this heifer and full sister Lot 11 are two of his best daughters. EBV's well above breed average growth with carcass data. **Led female**

PTIC to Waterford Red Rascal (PP) R/F joined 29/9/23 to 22/12/23.



LOT  
53

MAW GLENLEA  
**CHAROL 3RD (AI) (ET) (P) (R/F)**

TATTOO: MAW R107E  
DOB: 14/09/2020

RANGAN PARK REDEMPTION E42 (RAN E42E) (P)

SIRE: **GLENLEA JUST RED (GLE J5E) (P)**

GLENLEA JANET U6E R/F (GLE U6E) (P)

ROSEDALE DINGA (MR D25E) (P)

DAM: **GLENLEA CHAROL 72ND (GLE J8E) (P)**

GLENLEA CAAROL 42ND F37 (GLE F37E) (P)



Homozygous (PP) Polled

BARBER DISPERSAL

February 2024 Australasian Charolais Single-Step BREEDPLAN						
	CE Dir	GL	BW	200	400	600
EBV	-7.7	-0.4	+2.1	+16	+27	+43
Acc	45%	65%	70%	63%	63%	62%
	Milk	SS	Carc Wt	EMA	Rump	IMF
EBV	+6	+0.1	+20	+1.3	-0.2	+0.1
Acc	44%	61%	51%	45%	50%	43%

**COMMENTS:** Super fine hair coat, perfect udder, eye appeal, growth. Dam is the outstanding Charol 72nd one of Glenlea's high profile cow families. EBV's are well above breed average for all growth traits, and positive EMA and IMF%.

PTIC to Waterford Red Rascal (PP) R/F joined 29/9/23 to 22/12/23.

LOT  
54

GLENLEA  
**JANET 126TH (P) (R/F)**

TATTOO: GLE R32E  
DOB: 02/07/2020

RANGAN PARK REDEMPTION E42 (RAN E42E) (P)

SIRE: **GLENLEA JUST RED (GLE J5E) (P)**

GLENLEA JANET U6E R/F (GLE U6E) (P)

RANGAN PARK RIO BRAVO D15 (RAN D15E) (P)

DAM: **GLENLEA JANET 91ST (GLE L34E) (P)**

GLENLEA JANET 30TH (GLE E10E) (P)



BARBER DISPERSAL

February 2024 Australasian Charolais Single-Step BREEDPLAN						
	CE Dir	GL	BW	200	400	600
EBV	-9.3	-2.6	+1.2	+15	+35	+42
Acc	47%	64%	71%	63%	65%	63%
	Milk	SS	Carc Wt	EMA	Rump	IMF
EBV	+9	+0.3	+25	+2.2	+1.3	+0.8
Acc	49%	60%	55%	47%	59%	47%

**COMMENTS:** Bigger framed female than most in the sale, super fine coated, deep apricot colour, growth, perfect udder, excellent bone with great volume. Her dam is one of 3 full sister's producing in 3 stud herds, her Dam's 10 year old full sister sold in our Casino 2022 female sale for \$16,000. EBV's top of breed growth, excellent carcass data across all traits. 9 traits above breed average. Led female, would a be competitive show cow. Her first calf is offered as Lot 90.

PTIC to Waterford Red Rascal (PP) R/F joined 29/9/23 to 22/12/23.

LOT  
55

MAW  
**MADONNA 3RD (AI) (P)**

TATTOO: MAW S36E  
DOB: 01/05/2021

GLENLEA JEDDI (VLW J15E) (P)

SIRE: **ORARA WATERFALL GLENLEA NEPTUNE (WFA N42E) (P)**

GOODVIEW BLONDIE 3RD (HEL J10E) (P)

LT VENTURE 3198 (OAU J5612E) (P)

DAM: **ASCOT P57E (JAJ P57E) (P)**

ASCOT M34E (JAJ M34E) (P)



BARBER DISPERSAL

February 2024 Australasian Charolais Single-Step BREEDPLAN						
	CE Dir	GL	BW	200	400	600
EBV	+5.7	-4.0	-1.1	+17	+36	+47
Acc	35%	63%	59%	53%	51%	51%
	Milk	SS	Carc Wt	EMA	Rump	IMF
EBV	+12	+2.3	+31	+1.4	+0.8	+0.1
Acc	37%	49%	40%	37%	41%	36%

**COMMENTS:** An outstanding female! S36 is an early maturing, deep bodied, easy doing, thick stylish female, very fine coated and with a perfect udder developing, and an attractive strong polled head. This heifer has many admirers that have seen her in person. Perfect structure, very docile, a fault free female. Sired by Mawarra and Glenlea's exclusive sire Neptune (P) and out of the Lot 15 female. EBV's Top 20% all growth traits, Milk and Carcass Wt. with well below breed average BW. Total of 14 traits better than breed average!

PTIC to Waterford Red Rascal (PP) R/F joined 27/9/23 to 23/12/23.

LOT  
56

MAW  
**ESTELLA 1ST (AI) (P)**

TATTOO: MAW S34E  
DOB: 06/05/2021

ASHWOOD PARK RIO D213 F56E (HAS F56E) (P)  
**SIRE: RANGAN ASHWOOD F56 L84 (RAN L84E) (P)**  
RANGAN PARK DELIGHT G42 (RAN G42E) (P)  
GLENLEA HONOURABLE (VLW H25E) (P)  
**DAM: GLENLEA ESTELLA 15TH (GLE Q10E) (P)**  
VALLEY VIEW MISS ESTELLA (VLW G58E) (P)



February 2024 Australasian Charolais Single-Step BREEDPLAN

	CE Dir	GL	BW	200	400	600
EBV	+8.8	-4.5	-0.4	+12	+24	+32
Acc	46%	67%	67%	63%	62%	61%
	Milk	SS	Carc Wt	EMA	Rump	IMF
EBV	+14	+1.0	+19	+2.9	+1.7	+0.2
Acc	51%	61%	52%	46%	53%	46%



**BARBER DISPERSAL**

**COMMENTS:** A lovely long bodied, thick, early maturing female, perfect balance of softness and muscle in heifer with an attractive strong polled head. S34 is the first calf of Lot 62 in this sale, sired by a curve bending bull Ashwood L84 that Glenlea sourced semen from to join heifers to. She was designed to be well above average and her data is backing that up. EBV's Top 10% Milk and calving ease. Top 15% EMA, gestation length Top 20% Rump Fat and Low BW. Total of 13 traits better than breed average.

PTIC to Waterford Red Rascal (PP) R/F joined 27/9/23 to 23/12/23.

LOT  
57

MAW  
**PENNY 1ST (P)**

TATTOO: MAW S19E  
DOB: 03/03/2021

LT LEDGER 0332 (OAU F3168E) (P)  
**SIRE: RANGAN LEDGER N100 (RAN N100E) (P)**  
RANGAN PARK SHOWGIRL C29 (RAN C29E) (P)  
PARINGA LINKED IN L410 (TOL L410E) (P)  
**DAM: ASCOT PENNY P32E (JAJ P32E) (P)**  
ASCOT PENNY K3E (JAJ K3E) (P)



February 2024 Australasian Charolais Single-Step BREEDPLAN

	CE Dir	GL	BW	200	400	600
EBV	-4.6	-2.0	+1.1	+19	+39	+49
Acc	38%	59%	61%	58%	57%	54%
	Milk	SS	Carc Wt	EMA	Rump	IMF
EBV	+5	+2.4	+29	+1.9	+0.8	+0.7
Acc	43%	56%	45%	41%	46%	40%



**BARBER DISPERSAL**

**COMMENTS:** Classy first calver, Medium framed, fine coated, well-muscled polled feminine female, perfect udder development. Will calve prior to sale. Sire is a growthy son of LT Ledger and Dam is a high-performance female from a great cow family. EBV's Top 10% IMF, Top 15% all growth traits. Total of 10 traits better than breed average.

PTIC to Waterford Red Rascal (PP) R/F 27/9/23 to 23/12/23.

LOT  
58

MAW  
**ISABELLA 1ST (P) (R/F)**

TATTOO: MAW S11E  
DOB: 30/09/2021

RANGAN PARK REDEMPTION E42 (RAN E42E) (P)  
**SIRE: GLENLEA JUST RED (GLE J5E) (P)**  
GLENLEA JANET U6E R/F (GLE U6E) (P)  
RANGAN PARK RIO BRAVO D15 (RAN D15E) (P)  
**DAM: GLENLEA ISABELLA 2ND (GLE L22E) (P)**  
GOBONGO ISABELLA D86E (GO D86E) (P)



February 2024 Australasian Charolais Single-Step BREEDPLAN

	CE Dir	GL	BW	200	400	600
EBV	-9.3	-2.3	+0.9	+16	+35	+45
Acc	46%	62%	68%	62%	60%	60%
	Milk	SS	Carc Wt	EMA	Rump	IMF
EBV	+9	+1.0	+23	+1.4	+2.2	+1.0
Acc	49%	61%	50%	45%	50%	44%



**BARBER DISPERSAL**

**COMMENTS:** 2021 daughter of Lot 60. Red and polled, long bodied and fine hair coat. Outstanding bloodlines. The background to this heifer detailed with her Dam at lot 60. EBV's Top 5% all growth traits and IMF%. Top 10% Rib and Rump Fat. Total 11 traits better than breed average. An exciting mating with Red Rascal with his added carcass should be an ideal type.

PTIC to Waterford Red Rascal (PP) R/F 27/9/23 to 23/12/23.

LOT  
59

MAW  
**MISSY 1ST**

TATTOO: MAW S1E  
DOB: 15/04/2021

ASCOT JUGGERNAUT J134E (JAJ J134E) (P)  
SIRE: ASCOT MILESTONE M622E (JAJ M622E) (P/S)  
ASCOT J119E (JAJ J119E) (P)  
DOUGLASDALE VIAGARA (DOU C6E) (P)  
DAM: DOUGLASDALE MISSY HIGGINS (DOU M19D) (P)  
BARAMBAH-DALE BOUQUET (DAV B95C)



February 2024 Australasian Charolais Single-Step BREEDPLAN

	CE Dir	GL	BW	200	400	600
EBV	-0.6	-1.9	-0.2	+9	+17	+16
Acc	33%	49%	54%	49%	47%	48%
	Milk	SS	Carc Wt	EMA	Rump	IMF
EBV	+7	+1.1	+15	+2.3	+0.9	+0.3
Acc	38%	47%	39%	34%	37%	33%



BARBER DISPERSAL

COMMENTS: Long bodied and good frame, fine coated, good carcass. Dam is Lot 64, a lovely cow. Sire is Milestone, a bull that left some valuable progeny, very easy doing. EBV's Top 20% EMA, all positive growth and carcass data with below breed average BW.

PTIC to Waterford Red Rascal (PP) R/F joined 27/9/23 to 23/12/23.

LOT  
60

GLENLEA  
**ISABELLA 2ND (P)**

TATTOO: GLE L22E  
DOB: 19/08/2015

LT RIO BRAVO 3181 P M665507 (OAU Y5507E) (P)  
SIRE: RANGAN PARK RIO BRAVO D15 (RAN D15E) (P)  
PALGROVE SHOW GIRL 6 (PK P82E) (P)

HARVIE REDEMPTION 36P (OAC Z6641E) (P)  
DAM: GOBONGO ISABELLA D86E (GO D86E) (P)  
GOBONGO ISABELLA (GO T48E)

BARBER DISPERSAL



February 2024 Australasian Charolais Single-Step BREEDPLAN

	CE Dir	GL	BW	200	400	600	Milk	SS	Carc Wt	EMA	Rump	IMF
EBV	-3.2	-4.3	-0.9	+14	+31	+36	+10	+2.1	+21	+1.7	+3.6	+1.2
Acc	58%	70%	77%	70%	70%	69%	63%	67%	59%	53%	59%	52%

COMMENTS: This cow has some background! Dam of the Highest priced Charolais female sold in

Australia in 2021, Glenlea Isabella 14th (PP) R/F, sold for \$26,500 to Ashely and Dan Humphries, ASHDAN Charolais NSW. Her full sister sells at Lot 34, herself with a great production record. L22 is a big, strong, polled, deep soft cow, amazing udder and milking ability. The photo says it all. Her sire is the multi trait leading RIO D15 with nearly 300 registered progeny and her dam is the prolific Donor cow D86, with 29 registered progeny in 6 stud herds! Her first calf was a champion heifer at Lismore feature show at 8 months of age and sold for \$5750 at 12 months of age way back in 2019 when that was a high-priced heifer! Her second daughter is offered at Lot 36 in this sale, an outstanding daughter of Charnelle Louis, carcass improver for all traits. Her 3rd daughter was Isabella 14th noted above. L22 was purchased by Mawarra from Glenlea's Sale of the Decade in 2021 for \$12,000 as a joined cow, she and her weaned calf had a combined value of \$38,500 in that sale. Additionally she flushed 8 A grade embryos, 2 of which sold at the same 2021 Glenlea sale for \$1750 each. L22's lifetime earnings with a conservative value on the two daughters in this sale, including embryos is currently over \$68,000. This does not include her sale value when last offered at Auction, a further \$12,000.

EBV's Top 1% of breed for Rib and Rump Fat and IMF%, top 5% for Milk, Top 10% for EMA, Top 15% for all growth traits, Carcass Wt. and Scrotal. All this and still below breed average BW. And looks as classy as she does! Total of 13 traits better than breed average! **Approved for E.T. Led Female. Offered unjoined. Ready to Flush or IVF**



LOT  
61

GLENLEA  
**ADWANA 14TH (P) (R/F)**

TATTOO: GLE S14E  
DOB: 31/01/2021

GLENLEA HILTON (GLE H30E) (P)

SIRE: ORARA WATERFALL GLENLEA NORTH (WFA N25E) (P)

GLENLEA CHAROL 72ND (GLE J8E) (P)

GLENLEA JUST RED (GLE J5E) (P)

DAM: GLENLEA ADAWNA 5TH (GLE M106E) (P)

MIXHILL ADAWNA (MIX A455E)



Homozygous (PP) Polled

BARBER DISPERSAL

**COMMENTS:** Another special Glenlea Bred female! Medium framed, thick bodied, early maturing, with softness and overall yield. Sired by WFA/Glenlea North (P) a big carcass, high performance bull. Dam is one of Glenlea's prolific emerging cows families that has a string of high sellers and show winners. S14 purchased at the 2022 Charnelle invitation sale \$16,000 as was sale top price. Her maternal sister is a sale feature at Lot 31. EBV's Top 10% 600-day growth. Top 15% 200- and 400-day growth. Top 20% Milk and Carcass Wt and beef yield.

Joined with Glenlea Louis R305 (P) from 17/2/24 till sale day 26/04/24.

February 2024 Australasian Charolais Single-Step BREEDPLAN						
	CE Dir	GL	BW	200	400	600
EBV	-3.0	-1.0	+1.3	+16	+30	+48
Acc	36%	49%	68%	51%	49%	50%
	Milk	SS	Carc Wt	EMA	Rump	IMF
EBV	+10	+1.4	+26	+1.3	-0.5	+0.2
Acc	35%	49%	39%	37%	40%	35%

LOT  
62

GLENLEA  
**ESTELLA 15TH (P) (R/F)**

TATTOO: GLE Q10E  
DOB: 30/01/2019

RANGAN PARK REDEMPTION E42 (RAN E42E) (P)

SIRE: GLENLEA HONOURABLE (VLW H25E) (P)

FERNVALE CHIFFON (FEN C22E)

THW DEE V8 (THW D19E) (P/S)

DAM: VALLEY VIEW MISS ESTELLA (VLW G58E) (P)

VALLEY VIEW C004 ESTELLA 145 (VLW C4E) (P)



BARBER DISPERSAL

**COMMENTS:** A powerful young cow, lovely udder, fine hair type, excellent bone, length and attractive polled head all on a medium frame. Sired by Glenlea Honourable a true impact sire. Dam is by the 2010 Sydney Royal Horden trophy winner DEE V8, she has been a tremendous producer with daughter's retained by Glenlea. Q10 was purchased by Mawarra for \$11,000 at the 2020 Charnelle invitational where she was Grand Champion of the sale. Her first calf, a heifer is offered at Lot 56 in this sale, her 2022 heifer at Lot 82. **Led female.** EBV's Top 10% 200-day weight, Top 25% 400 and 600, EMA and Beef Yield %.

Joined with Glenlea Louis R305 (P) from 17/2/24 till sale day 26/04/24.

February 2024 Australasian Charolais Single-Step BREEDPLAN						
	CE Dir	GL	BW	200	400	600
EBV	-10.1	-0.7	+2.7	+17	+32	+46
Acc	46%	63%	71%	63%	62%	63%
	Milk	SS	Carc Wt	EMA	Rump	IMF
EBV	+6	+0.7	+26	+2.9	-0.4	+0.0
Acc	49%	58%	52%	43%	48%	42%

LOT  
63

MILFORD  
**ESTELLA Q2E (AI) (P)**

TATTOO: JOH Q2E  
DOB: 26/08/2019

CALOONA PARK HERO (LSF H104E)

SIRE: CALOONA PARK LITTLE HERO (LSF L93E)

CALOONA PARK DAFFODIL (LSF D135E) (P)

NOVOTEL (OAF S7519F)

DAM: VALLEY VIEW ESTELLA C14 9E (VLW J9E) (P/S)

PALGROVE ESTELLA 214 (PK A416E) (P)



BARBER DISPERSAL

**COMMENTS:** The strength of her in type and overall carcass, good bone, strong polled head all evident in photo.

Joined with Glenlea Louis R305 (P) from 17/2/24 till sale day.

February 2024 Australasian Charolais Single-Step BREEDPLAN						
	CE Dir	GL	BW	200	400	600
EBV	-0.1	-2.3	+1.2	+10	+19	+27
Acc	41%	70%	63%	48%	45%	46%
	Milk	SS	Carc Wt	EMA	Rump	IMF
EBV	+10	+0.7	+14	+1.5	-0.9	+0.1
Acc	37%	39%	35%	31%	33%	29%

LOT  
64

DOUGLASDALE  
**MISSY HIGGINS (P)**

TATTOO: DOU M19D  
DOB: 31/10/2016

PALGROVE VIAGRA (PK V92E) (P)

SIRE: DOUGLASDALE VIAGRA (DOU C6E) (P)

PALGROVE BRONWIN 73 (PK Y275E)

EVORA ROYAL FP119 (LAW R7F)

DAM: BARAMBAH-DALE BOUQUET (DAV B95C)

BARAMBAH-DALE U10B (DAV U10B)



BARBER DISPERSAL



February 2024 Australasian Charolais Single-Step BREEDPLAN

	CE Dir	GL	BW	200	400	600
EBV	+7.6	-3.8	-0.5	+6	+10	+8
Acc	45%	51%	69%	54%	54%	56%
	Milk	SS	Carc Wt	EMA	Rump	IMF
EBV	+8	+0.8	+11	+2.1	-0.6	-0.3
Acc	47%	45%	45%	35%	36%	33%

**COMMENTS:** Square thick bodied cow, perfect udder, strong attractive head and broad muzzle, good bone. She has produced some excellent progeny, her 2021 daughter sells at lot 59 and 2022 daughter at Lot 77. Sire was an early maturing bull, good carcass with excellent maternal traits and 97 registered progeny. Dam was a female heavy with French influence and M19 was her best daughter. EBV's reflect her early maturity and good overall carcass, with above average milk, EMA and beef yield and Low BW.

Joined with Glenlea Louis R305E (P) from 17/2/24 till 26/04/24

LOT  
65

MAW  
**YVONNE 4TH (AI)**

TATTOO: MAW 22T27E  
DOB: 15/06/2022



LT WYOMING WIND 4020 PLD (OAU P4020E) (P)

SIRE: PALGROVE VIAGRA (PK V92E) (P)

PALGROVE ESTELLA 73 (PK S201E)

RANGAN ROUNDUP K18 (RAN K18E) (P)

DAM: HUON YVONNE 2 (DG1 N27E) (P)

HUON YVONNE (DG1 K14E)

BARBER DISPERSAL

February 2024 Australasian Charolais Single-Step BREEDPLAN



	CE Dir	GL	BW	200	400	600	Milk	SS	Carc Wt	EMA	Rump	IMF
EBV	+3.0	-4.6	+1.4	+15	+34	+39	+6	+2.4	+27	+3.1	+0.3	-0.1
Acc	51%	70%	66%	63%	63%	66%	56%	60%	57%	50%	54%	49%

**COMMENTS:** This heifer calved at 20 months, unassisted with a lovely red bull calf by Glenlea Just Red (PP).

She is doing a great job on the calf and continuing to grow and mature, we think she will make a great cow with obvious fertility. EBV's have 10 traits above breed average with EMA top 10%. DNA testing has found this heifer to be horned.

She hasn't been rejoined and is offered ready to join.

LOT  
**66**

MAW  
**MISSY 2ND (AI) (P)**

TATTOO: MAW 22T19E  
DOB: 14/06/2022

VENTURON KEYSTONE (VE7 K14E) (P)  
SIRE: VENTURON MAXIMUM IMPACT (VE7 M60E) (P)  
VENTURON HILLARY (VE7 H43E) (P)  
DOUGLASDALE VIAGARA (DOU C6E) (P)  
DAM: DOUGLASDALE MISSY HIGGINS (DOU M19D) (P)  
BARAMBAH-DALE BOUQUET (DAV B95C)



February 2024 Australasian Charolais Single-Step BREEDPLAN

	CE Dir	GL	BW	200	400	600
EBV	+5.8	-4.5	-0.2	+9	+20	+26
Acc	40%	69%	62%	54%	58%	61%
	Milk	SS	Carc Wt	EMA	Rump	IMF
EBV	+11	+1.2	+21	+3.2	+0.7	-0.2
Acc	39%	44%	48%	34%	38%	33%



BARBER DISPERSAL

COMMENTS: Beautiful slick coated polled heifer. Early to mid-maturity, very correct structure with eye appeal, good doing and made the adjustment to coastal environment easily. EBV's Top 5% Milk and beef yield, top 15% EMA, growth reflects her early maturity phenotype.

A.I. Belbourie Park Royalty 15/11/23. Run with Taylor / Glenlea The Wind Maker (P) 17/2/24 to 26/4/24. Preg test in supplementary sheet prior to sale.

LOT  
**67**

MAW  
**NANCEY 2ND (AI) (P)**

TATTOO: MAW 22T77E  
DOB: 17/06/2022

VENTURON KEYSTONE (VE7 K14E) (P)  
SIRE: VENTURON MAXIMUM IMPACT (VE7 M60E) (P)  
VENTURON HILLARY (VE7 H43E) (P)  
ASCOT GOLDRUSH L87E (JAJ L87E) (P)  
DAM: ASCOT NANCEY P77E (JAJ P77E) (P)  
ASCOT NANCEY L31E (JAJ L31E) (P)



February 2024 Australasian Charolais Single-Step BREEDPLAN

	CE Dir	GL	BW	200	400	600
EBV	+3.4	-3.7	-1.3	+9	+19	+24
Acc	41%	70%	63%	56%	59%	62%
	Milk	SS	Carc Wt	EMA	Rump	IMF
EBV	+14	+0.8	+18	+2.7	+2.3	+0.5
Acc	40%	48%	49%	37%	42%	36%



BARBER DISPERSAL

COMMENTS: Another beautiful early maturing, correct, eye appealing heifer from a great cow, same as previous lot. Easy doing and adaptable. EBV's have Top 5% Low BW, combined with Top 5% EMA, Fat cover and IMF%, her growth reflects her early maturity.

A.I. Belbourie Park Royalty 15/11/23. Run with Taylor / Glenlea The Wind Maker (P) 17/2/24 to 26/4/24. Preg test in supplementary sheet prior to sale.

Homozygous (PP) Polled

LOT  
**68**

MAW  
**ISABELLA 4TH (AI) (P) (TW)**

TATTOO: MAW 22T599E  
DOB: 17/06/2022

VENTURON KEYSTONE (VE7 K14E) (P)  
SIRE: VENTURON MAXIMUM IMPACT (VE7 M60E) (P)  
VENTURON HILLARY (VE7 H43E) (P)  
ASCOT GOLDRUSH G136E (JAJ G136E) (P)  
DAM: ASCOT ISABELLA P59E (JAJ P59E) (P)  
GOBONGO ISABELLA D10E (GO D10E) (P)



February 2024 Australasian Charolais Single-Step BREEDPLAN

	CE Dir	GL	BW	200	400	600
EBV	+2.4	-3.9	+0.1	+13	+31	+41
Acc	44%	61%	64%	57%	56%	61%
	Milk	SS	Carc Wt	EMA	Rump	IMF
EBV	+11	+1.8	+25	+3.1	+2.2	+0.6
Acc	43%	51%	49%	40%	44%	39%



BARBER DISPERSAL

COMMENTS: These joined heifers are an outstanding group, would fit into any stud herd of replacement heifers. T599 is a twin, her sister next lot. Their outstanding Dam (Lot 15 in this sale) did a great job of raising them, such a good job that both were able to be joined as yearlings! Perfect balance of all traits, good temperament and presented out of the paddock.

A.I. Belbourie Park Royalty 6/12/23. Run with Taylor / Glenlea The Wind Maker (P) 17/2/24 to 26/4/24. Preg test in supplementary sheet prior to sale.

Homozygous (PP) Polled

LOT  
69

MAW

# ISABELLA 3RD (AI) (P) (TW)

TATTOO: MAW 22T598E

DOB: 17/06/2022

VENTURON KEYSTONE (VE7 K14E) (P)

SIRE: VENTURON MAXIMUM IMPACT (VE7 M60E) (P)

VENTURON HILLARY (VE7 H43E) (P)

ASCOT GOLDRUSH G136E (JAJ G136E) (P)

DAM: ASCOT ISOBELLA P59E (JAJ P59E) (P)

GOBONGO ISABELLA D10E (GO D10E) (P)



Homozygous (PP) Polled

BARBER DISPERSAL



February 2024 Australasian Charolais Single-Step BREEDPLAN

	CE Dir	GL	BW	200	400	600
EBV	+2.4	-3.9	+0.2	+14	+32	+44
Acc	44%	61%	64%	57%	56%	61%
	Milk	SS	Carc Wt	EMA	Rump	IMF
EBV	+11	+1.9	+27	+3.1	+2.2	+0.6
Acc	43%	51%	49%	40%	44%	39%

**COMMENTS:** Same comments can apply to this lot as previous lot. EBV's for both show moderate BW, above average Growth and top 10% for carcass traits. Note: this heifer has slight coloured stripes, visible in the photo, much less on opposing side, this will most likely fade out as she ages.

A.I. Belbourie Park Royalty 15/11/23. Run with Taylor / Glenlea The Wind Maker (P) 17/2/24 to 26/4/24. Preg test in supplementary sheet prior to sale.

LOT  
70

GL LIVESTOCK

# TREASURE MAKER (AI) (P)

TATTOO: GUM 22T1E

DOB: 09/03/2022

KAYR GRID GRID IRON 400S (OAC B4093E) (P)

SIRE: CSS SIR GRIDMAKER 2W (OAC E7387E) (P)

CSS LADY RED NAVIGATOR 1T (OAC C1966E) (P)

DOUGLASDALE VENTURA (DOU K36E)

DAM: DOUGLASDALE PEACEFUL (DOU P12E) (P)

HUON YVONNE (DG1 K14E)



BARBER DISPERSAL



February 2024 Australasian Charolais Single-Step BREEDPLAN

	CE Dir	GL	BW	200	400	600
EBV	+1.0	-5.9	-0.9	+12	+22	+30
Acc	49%	54%	59%	56%	55%	54%
	Milk	SS	Carc Wt	EMA	Rump	IMF
EBV	+7	+1.9	+25	+2.9	-1.2	-0.6
Acc	50%	52%	48%	43%	46%	42%

**COMMENTS:** A classy heifer with eye appeal and curve bending EBV's. Sired by Sir Gridmaker a champion sire from Canada imported by Palgrove with over 250 registered progeny and a trait leader for Low BW and Top 1% of breed for EMA and Beef yield! Dam was the leading show cow for GL livestock, Molong NSW. T1's Dam Peaceful has won many Grand Championships at regional shows in central west NSW. EBV's Top 5% EMA and Beef Yield. Top 10% Gestation length, Top 10% Low BW. Total 8 traits better than breed average. **Led female.**

A.I. Belbourie Park Royalty 15/11/23 run with Taylor/Glenlea The Wind Maker (P) 17/2/24 to 26/4/24. Preg test in supplementary sheet prior to sale.

LOT  
71

DOUGLASDALE

# TASTE OF APPEAL (AI) (P)

TATTOO: DOU 22T2E

DOB: 03/03/2022

LHD CIGAR E46 M434790 (OAU Q46E) (P)

SIRE: JDJ SMOKESTER J1377 P ET (OAU U9419E) (P)

JD MS COMMANDER B309 (PED -8745E)

PALGROVE BECKHAM S (PK B417E) (P/S)

DAM: DOUGLASDALE APPEAL 19 (DOU N8E) (P)

DOUGLASDALE LOTS OF APPEAL (DOU L9E)



BARBER DISPERSAL



February 2024 Australasian Charolais Single-Step BREEDPLAN

	CE Dir	GL	BW	200	400	600
EBV	-5.0	-4.8	+1.2	+14	+22	+32
Acc	44%	55%	54%	51%	49%	50%
	Milk	SS	Carc Wt	EMA	Rump	IMF
EBV	+14	+1.5	+12	+1.0	+0.4	-0.1
Acc	47%	46%	43%	37%	41%	35%

**COMMENTS:** A powerful carcass heifer with real eye appeal. Length, thickness and strong attractive polled head. Sired by powerful carcass sire Smokester, a Cigar son, one of the most sort after bloodlines ever imported from the USA. Her dam is a powerful, thick easy doing cow that catches your eye every time with a powerful cow family, one of Palgrove's originals backing up her genetic value. EBV's Top 5% Milk 7 traits better than breed average. **Led Female.**

A.I. Belbourie Park Royalty 15/11/23 run with Taylor/Glenlea The Wind Maker (P) 17/2/24 to 26/4/24. Preg test in supplementary sheet prior to sale.

LOT  
72

MAW  
**NANCEY 1ST (AI) (P)**

TATTOO: MAW S100E  
DOB: 11/05/2021

GLENLEA JEDDI (VLW J15E) (P)  
SIRE: ORARA WATERFALL GLENLEA NEPTUNE (WFA N42E) (P)  
GOODVIEW BLONDIE 3RD (HEL J10E) (P)  
ASCOT GOLDRUSH L87E (JAJ L87E) (P)  
DAM: ASCOT NANCEY P77E (JAJ P77E) (P)  
ASCOT NANCEY L31E (JAJ L31E) (P)



February 2024 Australasian Charolais Single-Step BREEDPLAN

	CE Dir	GL	BW	200	400	600
EBV	+4.1	-2.4	-1.0	+13	+24	+35
Acc	35%	65%	61%	52%	49%	49%
	Milk	SS	Carc Wt	EMA	Rump	IMF
EBV	+12	+1.0	+23	+1.8	+0.8	+0.3
Acc	34%	47%	38%	34%	38%	33%



BARBER DISPERSAL

**COMMENTS:** This is another class heifer. Overall thickness, softness and carcass yield in a stylish phenotype with strong maternal strength. Sired by Neptune, Barber and Glenlea's exclusive sire and out of lot 4 in this sale, S100's outstanding Dam gives you a window in the future potential of this heifer. EBV's Top 15% EMA and IMF%. Top 20% Gestation length and Milk. Top 25% Low BW. Total 13 traits better than breed average.

Joined with Taylor / Glenlea The Wind Maker T8 (P) from 17/2/24 till 26/4/24.

LOT  
73

GLENLEA FAIRFIELD  
**CUTE 1ST T905 (P) (R/F)**

TATTOO: GLE 22T905E  
DOB: 20/02/2022



Homozygous (PP) Polled

PARINGA RIO BRAVO D213E (TOL D213E) (P)  
SIRE: ELRIDGE LORD (RUU L43E) (P)  
ELRIDGE HARMONY (RUU H14E)

FERNVALE EAGLE ROCK (FEN E49E) (P/S)  
DAM: LVH-FAIRFIELD CUTE H209 (LVH H209E) (P)  
LVH-FAIRFIELD CUTE (LVH D14E) (P)



February 2024 Australasian Charolais Single-Step BREEDPLAN

	CE Dir	GL	BW	200	400	600	Milk	SS	Carc Wt	EMA	Rump	IMF
EBV	+1.3	+1.4	+1.3	+20	+44	+66	+10	-0.3	+34	+1.8	+1.2	+1.2
Acc	35%	61%	62%	61%	59%	60%	39%	61%	48%	44%	47%	43%

**COMMENTS: Attention! Donor Prospect.** Cute 1st is our number 1 pick of our "Lord" heifers from our purchase of the Fairfield herd a few years ago, her pedigree is full of breed leading sires and dams. Length, softness, loose skinned, good bone, Bomb proof temperament, easy doing medium maturity phenotype with visible extra softness. EBV's are an exceptionally positive spread from birth through the growth curve and carcass with 11 traits above breed average, Top 1% growth traits, IMF% and carcass weight. Lovely apricot coat colour and Homozygous Polled. Cute 1st is the complete package. *Glenlea would be interested in a joint E.T. program with the successful purchaser. Why sell such a front paddock heifer we have been asked? Because we are prepared to share our best with all our clients, old and new!*

PTIC to MAW / Glenlea Ashwood S38E (PP). Due June / July 2024. Our lead proven heifer bull, early maturing, very easy calving, see the calves at foot of lots 44 to 49.



LOT  
74

GLENLEA FAIRFIELD  
**DESIRE 18TH T902**

TATTOO: GLE 22T902E  
DOB: 27/02/2022

PARINGA RIO BRAVO D213E (TOL D213E) (P)

SIRE: ELRIDGE LEVI (RUU L69E) (P)

GRANVILLE LUCY 10 (GDA F11E)

EC NO DOUBT 2022 P (OAU Z2022E) (P)

DAM: LVH-FAIRFIELD DESIRE II H91 (LVH H91E) (P)

LVH-FAIRFIELD DESIRE 2 (LVH E144F)



February 2024 Australasian Charolais Single-Step BREEDPLAN

	CE Dir	GL	BW	200	400	600
EBV	+5.6	-3.1	+0.9	+14	+35	+47
Acc	36%	60%	61%	59%	58%	57%
	Milk	SS	Carc Wt	EMA	Rump	IMF
EBV	+8	+0.8	+29	+2.1	-0.8	+0.2
Acc	41%	56%	47%	42%	46%	41%

**COMMENTS:** Big volumed heifer, thick bodied, slick coated and gentle nature, from a big powerful half French Polled Fairfield Dam by the early maturing easy finishing Levi. This lot and lot 73 are presented off grass from our Dorrigo property, they will adapt easily to any environment. We expect this female to breed outstanding bulls for all markets.

**PTIC to MAW / Glenlea Ashwood S38E (PP) Due June / July 2024. Our lead proven heifer bull, early maturing, very easy calving, see the calves at foot of lots 44 to 49.**

LOT  
75

TAYLOR  
**POPPY 1ST (AI) (P)**

TATTOO: TC3 S12E  
DOB: 08/08/2021

VALLEY VIEW JAGER (VLW J2E) (P)

SIRE: VALLEY VIEW LEADER (VLW L22E) (P)

VALLEY VIEW CHIFFON SILVER (VLW J6E) (P)

ASCOT JACK FLASH J105E (JAJ J105E) (P)

DAM: CALMVIEW POPPY Q5E (CVW Q5E) (P)

CALMVIEW POPPY M55E (CVW M55E)



February 2024 Australasian Charolais Single-Step BREEDPLAN

	CE Dir	GL	BW	200	400	600
EBV	+8.5	-4.6	-2.3	+10	+22	+29
Acc	37%	59%	68%	63%	58%	56%
	Milk	SS	Carc Wt	EMA	Rump	IMF
EBV	+9	+1.8	+23	+2.3	+1.3	+0.3
Acc	43%	53%	43%	37%	43%	36%

**COMMENTS:** Outstanding early maturing powerful heifer. strong polled head, good bone and very correct. Sire has been very successful at a number of studs combining low BW with added carcass. Dam is from one of Calmview's most prominent cow families. EBV's are top 10% for calving ease and Low BW, with good growth and well above average carcass data.

**PTIC to Taylor / Glenlea Kilopacka (PP) (TC3 S11E) a curve bending sire that was selected to use in the stud for his extra carcass and growth with Low BW and PP polled. Due August 2024.**

LOT  
76

TAYLOR  
**NOLANA 1ST (AI) (P)**

TATTOO: TC3 22T16E  
DOB: 04/09/2022

SPARROWS FARGO 811U (PED D4935E) (P)

SIRE: RBM FARGO Y111 (OAU G9088E) (P)

HC RHINESTONE 5100 (PED A6859E) (P)

GLENLEA KENWORTH (GLE K80E) (P)

DAM: GLENLEA NOLANA 125TH (GLE R9E) (P)

GLENLEA NOLANA 33RD R/F (PS) (GLE C26E) (P/S)



February 2024 Australasian Charolais Single-Step BREEDPLAN

	CE Dir	GL	BW	200	400	600
EBV	+2.7	-5.3	-1.2	+16	+27	+36
Acc	39%	67%	70%	67%	62%	61%
	Milk	SS	Carc Wt	EMA	Rump	IMF
EBV	+9	+1.8	+26	+2.4	+1.6	+0.1
Acc	39%	59%	48%	41%	50%	40%

**COMMENTS:** Great young heifer, out of a great milking Nolana female. This heifer is her first calf, super soft sire by Fargo, who is leaving progeny with breed leading Fat cover. T16 would add finish to any heavily muscled sire. EBV's are ideal, Low bw, well above average growth and carcass data near the top of the breed.

**PTIC to breed legend, with calving ease and carcass, LT Venture (PP). Calf will be PP Polled by pedigree. A.I. 22/1/24 due November 2024.**

Homozygous (PP) Polled

LOT  
77

TAYLOR  
**ELEGANCE 1ST (AI) (P)**

TATTOO: TC3 22T19E  
DOB: 12/09/2022

GERRARD PASTOR 35Z (OAC H7921E) (P)  
SIRE: ELDER'S BLACKJACK 788B (OAC K788E) (P)  
SVY STARTSTRUCK 8X (OAC F8E) (P)  
JWX SILVER BULLET 524W (OAC E5757E) (P)  
DAM: CHARNELLE ELEGANCE 8 (GKA J38E) (P)  
CHARNELLE ELEGANCE 2 (GKA B50E)



February 2024 Australasian Charolais Single-Step BREEDPLAN						
	CE Dir	GL	BW	200	400	600
EBV	-0.5	-3.0	+1.7	+14	+32	+50
Acc	48%	70%	74%	70%	67%	66%
	Milk	SS	Carc Wt	EMA	Rump	IMF
EBV	+6	+2.3	+24	+0.9	+1.0	-0.2
Acc	56%	65%	53%	45%	51%	44%

**COMMENTS:** Eye catching young female with a very well-known cow family behind her. Long, very correct, easy finishing and lovely soft hide and fine hair type. Dam is a Donor cow for Charnelle and Taylor Livestock. Sire is very well known for outstanding progeny with almost 300 registered progeny in Australia. EBV's are well above average for all growth traits.

Joined with Taylor / Glenlea Fargo (TC3 T14E) a unique sire that has a big future. Sired by RBM Fargo and out of a fully imported E.T. female from Silverstream Dasher cow family. 1/3/24 to 26/4/24.

LOT  
78

TAYLOR  
**GRETA 1ST (AI) (P)**

TATTOO: TC3 22T5E  
DOB: 10/04/2022

MXV COUGARHILL HANK 720G (PED -52E)  
SIRE: PCC SUDDEN IMPACT 848U (OAC D1017E) (P)  
SPARROWS TEMPEST 174K (PED -732E) (P)  
BRANCH VIEW FORDGED FROM STEEL (BVC F34E) (P)  
DAM: ORARA WATERFALL GLENLEA GRETA 1ST (WFA K25E) (P)  
JACKSON GRETA (MEJ G10E) (P)

February 2024 Australasian Charolais Single-Step BREEDPLAN						
	CE Dir	GL	BW	200	400	600
EBV	-5.1	-2.2	-0.3	+4	+11	+16
Acc	46%	68%	68%	62%	58%	59%
	Milk	SS	Carc Wt	EMA	Rump	IMF
EBV	+13	+1	-1	+1.7	+0.3	+0.5
Acc	31%	55%	48%	41%	47%	41%

**WITHDRAWN**

COMMENTS:

LOT  
79

ASHDAN  
**NUNCIATA 1ST (AI) (P)**

TATTOO: ADB S5E  
DOB: 06/09/2021

LT RIO BRAVO 3181 P (OAU Y5507E) (P)  
SIRE: PARINGA RIO BRAVO D213E (TOL D213E) (P)  
PARINGA CIGAR B064 (TOL B64E)  
GLENLEA HONOURABLE (VLW H25E) (P)  
DAM: GLENLEA NUNCIATA 116TH (GLE Q39E) (P)  
GLENLEA NUNCIATA 50TH (GLE H17E) (P)



February 2024 Australasian Charolais Single-Step BREEDPLAN						
	CE Dir	GL	BW	200	400	600
EBV	+10.0	-2.2	-2.1	+9	+18	+31
Acc	50%	68%	67%	60%	59%	58%
	Milk	SS	Carc Wt	EMA	Rump	IMF
EBV	+11	+0.4	+14	+1.8	+3.0	+1.0
Acc	52%	57%	54%	51%	54%	51%

**COMMENTS:** Wonderfully soft easy doing, early maturing heifer. Her dam is an exceptional Honorable daughter, early maturing and great carcass, combined with Paringa Rio D213 who is a breed impact sire for Ultra Low BW Top 1% and one of the highest Fat cover bulls in the breed (top 1%), Milk (top 5%). EBV's for S5E top 10% Low BW, Milk and top 5% Fat cover.

PTIC to Glenlea Kowboy (P) R/F due July / August 2024. Kowboy is a reference sire with a number of outstanding daughters in this sale and our lead sire group of bulls for this year is also sired by Kowboy!

LOT  
80

MAW GLENLEA  
**GINA 3RD (P) (R/F)**

TATTOO: MAW 22T33E  
DOB: 03/09/2022

WON-CANYA KOWBOY (RJU K4E) (P/S)  
SIRE: **GLENLEA KOWBOY Q405 (GLE Q405E) (P)**  
GLENLEA NOLANA 60TH (GLE G1E) (P/S)  
PALGROVE HERMES (PK H549E) (P)  
DAM: **WATERFORD LADY GINA L33E (WET L33E) (P)**  
DSK MY GINA D23E (DSK D23E) (P)



**BARBER DISPERSAL**

February 2024 Australasian Charolais Single-Step BREEDPLAN						
	CE Dir	GL	BW	200	400	600
EBV	-3.5	-0.1	+2.0	+14	+27	+42
Acc	33%	49%	55%	54%	60%	64%
	Milk	SS	Carc Wt	EMA	Rump	IMF
EBV	+7	+1.2	+19	+0.1	+0.0	-0.1
Acc	35%	52%	51%	35%	38%	34%

**COMMENTS:** A class heifer from every angle. Growth, carcass, structure and temperament all ideal. T33's Sire Kowboy is a bull much will be heard about in coming years as his progeny come through our sales - growth, carcass, medium maturity, good bone, fine hair type and 99% apricot out of white cows! Dam is special Champion cow Lady Gina, who has many comments in this catalogue. EBV's well above breed average growth with all positive carcass data.

Joined to Taylor / Glenlea The Wind Maker T8 (P) 17/2/24 to 26/4/24

LOT  
81

MAW GLENLEA  
**NUNCIATA 2ND (P) (R/F)**

TATTOO: MAW 22T901E  
DOB: 20/09/2022

WON-CANYA KOWBOY (RJU K4E) (P/S)  
SIRE: **GLENLEA KOWBOY Q405 (GLE Q405E) (P)**  
GLENLEA NOLANA 60TH (GLE G1E) (P/S)  
CML DISTINCTION 318A MC351779 (OAC J318E) (P)  
DAM: **GLENLEA NUNCIATA 121ST (GLE Q901E) (P)**  
ALLEDNAW NUNCIATA G109 (AKT G109E) (P)



**BARBER DISPERSAL**

February 2024 Australasian Charolais Single-Step BREEDPLAN						
	CE Dir	GL	BW	200	400	600
EBV	-5.0	-0.4	+2.7	+18	+39	+53
Acc	31%	50%	57%	55%	60%	64%
	Milk	SS	Carc Wt	EMA	Rump	IMF
EBV	+7	+1.6	+29	+0.4	-1.0	+0.0
Acc	33%	52%	50%	34%	38%	32%

**COMMENTS:** Outstanding heifer! Highly productive Dam and Cow family. Volume and length, all prepared of grass on the north coast. Sired by Kowboy. These are herd building females the calibre of which only ever usually come up for sale in dispersal sale events like this. EBV's moderate BW, well above average growth, extra overall carcass yield.

Joined to Taylor / Glenlea The Wind Maker T8 (P) 17/2/24 to 26/4/24

LOT  
82

MAW GLENLEA  
**ESTELLA 7TH (P/S) (R/F)**

TATTOO: MAW 22T10E  
DOB: 30/09/2022

WON-CANYA KOWBOY (RJU K4E) (P/S)  
SIRE: **GLENLEA KOWBOY Q405 (GLE Q405E) (P)**  
GLENLEA NOLANA 60TH (GLE G1E) (P/S)  
GLENLEA HONOURABLE (VLW H25E) (P)  
DAM: **GLENLEA ESTELLA 15TH (GLE Q10E) (P)**  
VALLEY VIEW MISS ESTELLA (VLW G58E) (P)



**BARBER DISPERSAL**

February 2024 Australasian Charolais Single-Step BREEDPLAN						
	CE Dir	GL	BW	200	400	600
EBV	-10.9	-0.2	+3.7	+22	+44	+64
Acc	32%	50%	57%	54%	60%	64%
	Milk	SS	Carc Wt	EMA	Rump	IMF
EBV	+7	+1.1	+33	+1.7	-0.6	+0.1
Acc	34%	52%	50%	35%	38%	34%

**COMMENTS:** A very powerful heifer to that will breed powerful bulls. Her Dam is Lot 62 and was a Champion as a heifer. Her sire is Kowboy and all these red factor daughters will be outstanding breeding females. T10's extra carcass yield in evident in her photo. EBV's are Top 1% of the breed for all growth traits and carcass EBV's will certainly lift with the first drop of Kowboy progeny about to be Carcass scanned and have data submitted.

Joined to Taylor / Glenlea The Wind Maker T8 (P) 17/2/24 to 26/4/24

LOT  
83

MAW GLENLEA  
**ESTELLA 2ND (P) (R/F)**

TATTOO: MAW 22T83E  
DOB: 24/09/2022

WON-CANYA KOWBOY (RJU K4E) (P/S)  
SIRE: **GLENLEA KOWBOY Q405 (GLE Q405E) (P)**  
GLENLEA NOLANA 60TH (GLE G1E) (P/S)  
RANGAN ROUNDUP K18 (RAN K18E) (P)  
DAM: **HUON ESTELLA 17 (DG1 N23E) (P)**  
HUON ESTELLA F3 (DG1 F3E)



**BARBER DISPERSAL**

**COMMENTS:** Very nice easy doing, very quiet heifer. Balance of carcass and finish. From an outstanding Dam being offered at Lot 32. The only heifer sired by Kowboy that is light apricot colour. EBV's are all well above breed average for growth.

Joined to Taylor / Glenlea The Wind Maker T8 (P) 17/2/24 to 26/4/24

		February 2024 Australasian Charolais Single-Step BREEDPLAN					
		CE Dir	GL	BW	200	400	600
EBV	-6.9	-1.8	+2.2	+16	+35	+47	
Acc	32%	47%	56%	54%	59%	63%	
		Milk	SS	Carc Wt	EMA	Rump	IMF
EBV	+6	+1.6	+24	+0.8	-0.6	+0.0	
Acc	32%	51%	49%	34%	37%	33%	

LOT  
84

MAW GLENLEA  
**ADWANA 6TH (P) (R/F)**

TATTOO: MAW 22T2E  
DOB: 20/10/2022

WON-CANYA KOWBOY (RJU K4E) (P/S)  
SIRE: **GLENLEA KOWBOY Q405 (GLE Q405E) (P)**  
GLENLEA NOLANA 60TH (GLE G1E) (P/S)  
CHALLAMBI MUSCLES (CHA M15E) (P)  
DAM: **GLENLEA ADAWNA 7TH (GLE Q2E) (P)**  
GLENLEA ADAWNA 5TH (GLE M106E) (P)



**BARBER DISPERSAL**

**COMMENTS:** Another classic Kowboy daughter, a little younger than others. Long bodied, fine coated, very correct and bomb proof temperament and an outstanding Dam offered at Lot 31. You could buy all these Kowboy heifers and have a fantastic group of Red Factor females to breed those high value Red Factor bulls that are in high demand.

Joined to Taylor / Glenlea The Wind Maker T8 (P) 17/2/24 to 26/4/24

		February 2024 Australasian Charolais Single-Step BREEDPLAN					
		CE Dir	GL	BW	200	400	600
EBV	-6.9	-1.2	+1.9	+19	+39	+57	
Acc	31%	46%	55%	53%	59%	63%	
		Milk	SS	Carc Wt	EMA	Rump	IMF
EBV	+10	+1.3	+30	+0.7	+0.3	+0.2	
Acc	31%	51%	49%	34%	36%	33%	

LOT  
85

MAW GLENLEA  
**ESTELLA 5TH (P) (R/F)**

TATTOO: MAW 22T81E  
DOB: 03/09/2022

WON-CANYA KOWBOY (RJU K4E) (P/S)  
SIRE: **GLENLEA KOWBOY Q405 (GLE Q405E) (P)**  
GLENLEA NOLANA 60TH (GLE G1E) (P/S)  
ASCOT LIQUID GOLD L7E (JAJ L7E) (P)  
DAM: **ASCOT ESTELLA N81E (JAJ N81E) (P)**  
ASCOT ESTELLA L84E (JAJ L84E) (P)



**BARBER DISPERSAL**

**COMMENTS:** Long bodied, loose hide, fine coated, good bone like all the Kowboy heifers. T81's Dam is offered at Lot 33, excellent cow. EBV's showing low BW and well above average growth with all positive carcass data.

Joined to Taylor / Glenlea The Wind Maker T8 (P) 17/2/24 to 26/4/24

		February 2024 Australasian Charolais Single-Step BREEDPLAN					
		CE Dir	GL	BW	200	400	600
EBV	-3.7	-2.7	+0.8	+16	+30	+41	
Acc	32%	51%	55%	55%	60%	64%	
		Milk	SS	Carc Wt	EMA	Rump	IMF
EBV	+9	+1.0	+23	+1.3	+1.2	+0.3	
Acc	34%	51%	51%	36%	41%	35%	

LOT  
86

GLENLEA  
**CHIFFON 26TH (P) (R/F) (TW)**

TATTOO: GLE 23U18E  
DOB: 22/02/2023

GLENLEA HONOURABLE (VLW H25E) (P)  
SIRE: GLENLEA HONORABLE P80 (GLE P80E) (P)  
PALGROVE NANETTE 190 E431E (PK E431E)  
LHD CIGAR E46 M434790 (OAU Q46E) (P)  
DAM: VALLEY VIEW CHIFFON SILVER N2 (VLW N2E) (P)  
VALLEY VIEW CHIFFON SILVER (VLW J6E) (P)



Homozygous (PP) Polled

**COMMENTS:** U18, has curves in all the right places. An outstanding type, she is slightly heavier than her twin sister, we feel the better of the two, so we are offering the best one. We have embryos out of her Dam so will have more sisters coming through. Dam is from a very famous cow family that has had an impact on the breed through the many stud sires produced. Sire is a big carcass, dark red sire that has sons that topped our Clermont bull sale last year. EBV growth and carcass well above average, Top 10% beef yield.

Ready to join.

February 2024 Australasian Charolais Single-Step BREEDPLAN						
	CE Dir	GL	BW	200	400	600
EBV	-2.8	-1.4	+2.7	+16	+28	+43
Acc	37%	56%	62%	57%	54%	53%
	Milk	SS	Carc Wt	EMA	Rump	IMF
EBV	+4	+1.3	+20	+2.0	+0.5	-0.2
Acc	42%	51%	43%	38%	42%	37%

LOT  
87

GLENLEA  
**EIGHTEEN KARAT 1ST (P) (R/F)**

TATTOO: GLE 23U904E  
DOB: 05/02/2023

PALGROVE HERMES (PK H549E) (P)  
SIRE: WATERFORD NEON LIGHTS N35E (WET N35E) (P)  
WATERFORD ELECTRA 2 G174E (WET G174E) (P/S)  
PALGROVE GALLANT (PK G176E) (P)  
DAM: PALGROVE EIGHTEEN KARAT M791E (PK M791E)  
PALGROVE EIGHTEEN KARAT 62 (PK H843E)



**COMMENTS:** Definite **SHOW PROSPECT**, ready to break in. Big upstanding heifer, very well grown. Sire is a champion bull winning interbreed in Melbourne Royal in his day. Dam is an Eighteen Karat cow, that we rate very highly. A competitive show prospect with a depth of breeding to be a great producer. EBV's have growth traits above average and all positive carcass EBV's.

Unjoined

February 2024 Australasian Charolais Single-Step BREEDPLAN						
	CE Dir	GL	BW	200	400	600
EBV	-2.8	-0.8	+1.7	+12	+22	+33
Acc	38%	54%	59%	55%	53%	52%
	Milk	SS	Carc Wt	EMA	Rump	IMF
EBV	+6	+0.3	+15	+0.7	+0.8	+0.2
Acc	43%	50%	42%	37%	44%	37%

LOT  
88

GLENLEA  
**EIGHTEEN KARAT 3RD (AI) (P)**

TATTOO: GLE 22T961E  
DOB: 30/08/2022

PALGROVE JUBILEE (PK J395E) (AI) (P)  
SIRE: PALGROVE MODERATOR (PK M544E) (AI) (P)  
PALGROVE FELICITY J1046 (PK J1046E) (P)  
MOONGOOL MONOPOLY (DP2 M513E) (P)  
DAM: WATERFORD QUEEN EIGHTEEN KARAT (WET Q42E) (P)  
PALGROVE EIGHTEEN KARAT 62 (PK H843E) (H)



**COMMENTS:** Early maturing polled heifer, with extra thickness, good fat cover, natural doability and bomb proof temperament, will make an outstanding cow. Dam is a great bodied daughter of Monopoly and Grand dam is an outstanding producer, being from nationally known cow family. Sire has produced early maturing progeny with well above average growth, and big carcass. EBV's moderate BW, well above average growth with Top 10% EMA and Beef yield.

Ready to join.

February 2024 Australasian Charolais Single-Step BREEDPLAN						
	CE Dir	GL	BW	200	400	600
EBV	+2.2	-1.3	+0.9	+13	+27	+40
Acc	36%	58%	60%	56%	56%	56%
	Milk	SS	Carc Wt	EMA	Rump	IMF
EBV	+6	+1.2	+28	+2.8	-0.3	-0.3
Acc	38%	57%	46%	40%	45%	40%

LOT  
89

GLENLEA  
**REFINE 18TH (P) (R/F)**

TATTOO: GLE 23U23E  
DOB: 11/02/2023

WON-CANYA KOWBOY (RJU K4E) (P/S)  
SIRE: **GLENLEA KOWBOY Q405 (GLE Q405E) (P)**  
GLENLEA NOLANA 60TH (GLE G1E) (P/S)  
VENTURON CRUSTY DEMON (VE7 C5E) (P)  
DAM: **DSK VCD REFINE L49E (DSK L49E) (P)**  
DSK PJ REFINE J88E (DSK J88E) (P)



February 2024 Australasian Charolais Single-Step BREEDPLAN

	CE Dir	GL	BW	200	400	600
EBV	-12.3	-1.3	+2.0	+14	+31	+46
Acc	42%	64%	64%	60%	58%	60%
	Milk	SS	Carc Wt	EMA	Rump	IMF
EBV	+9	+0.8	+20	+0.9	+1.2	+0.6
Acc	45%	58%	50%	43%	51%	42%



**BARBER DISPERSAL**

**COMMENTS:** Well-shaped, gentle, polled, apricot heifer. Second youngest Kowboy heifer in sale. Dam is Donor cow offered at lot 40. This heifer is one of our picks in the Barber dispersal, great combination of sire and dam. EBV's Top 15% growth and all positive carcass traits.

Ready to join.

LOT  
90

GLENLEA  
**JANET 156TH (AI) (P) (R/F)**

TATTOO: GLE 23U145E  
DOB: 11/04/2023

PLEASANT DAWN MVP 316Y (PED G316E) (P)  
SIRE: **TURNBULLS DUTY-FREE 358D (OAC M1309E) (P)**  
CTP MISS GOOGLE 358Z (PED H9808E) (P)  
GLENLEA JUST RED GLE J5E (AI) (ET) (P) (R/F)  
DAM: **GLENLEA JANET 126TH (GLE R32E) (P) (R/F)**  
GLENLEA JANET 91ST (GLE L34E) (P)



February 2024 Australasian Charolais Single-Step BREEDPLAN

	CE Dir	GL	BW	200	400	600
EBV	-4.4	-5.4	+0.5	+22	+40	+55
Acc	44%	71%	68%	65%	64%	63%
	Milk	SS	Carc Wt	EMA	Rump	IMF
EBV	+4	+2.3	+28	+1.0	+1.6	+0.1
Acc	39%	61%	52%	45%	56%	45%



**BARBER DISPERSAL**

**COMMENTS:** Good framed heifer, heifer's fist calf. Brought to coastal environment at a month old with her dam, so had major environment change. Youngest heifer in sale, will grow out to be a big, powerful female, just like her Dam, Lot 54. Sire is a high-performance Canadian sire producing standout progeny. EBV's Top 3% for all growth traits, total of 12 traits above breed average.

Unjoined

LOT  
91

GLENLEA  
**RACHEL 3RD (P/S) (R/F)**

TATTOO: GLE 22T413E  
DOB: 23/12/2022

GLENLEA JUST RED (GLE J5E) (P)  
SIRE: **GLENLEA PHEONIX (GLE P41E) (P)**  
VALLEY VIEW ESTELLA 416 (VLW H26E) (P)  
MOONGOOL YELLOW PAGES (DP2 Y115E) (P/S) (S)  
DAM: **BAROOLA RACHEL D941E (NCF D941E) (P/S) (S)**  
BAROOLA RACHEL 2 R/F (NCF T82E) (P)



February 2024 Australasian Charolais Single-Step BREEDPLAN

	CE Dir	GL	BW	200	400	600
EBV	-5.2	-0.3	+1.4	+12	+25	+36
Acc	38%	52%	60%	57%	55%	55%
	Milk	SS	Carc Wt	EMA	Rump	IMF
EBV	+8	+1.2	+18	+1.5	+1.2	+0.4
Acc	44%	53%	46%	40%	46%	39%



**COMMENTS:** Very classy red heifer! Great topline, extra length, good carcass. Dam is an outstanding Baroola cow that stayed in the stud herd till 14 years old, still had a perfect udder. Sire is Pheonix, Rachel 3rd is the only heifer by him in sale, but six 1st calvers from lot 44 to 49 are on offer. All his progeny have extra performance, length, carcass and this heifer is no exception.

Ready to join.

LOT  
92

GLENLEA  
**NOLANA 157TH (P) (R/F)**

TATTOO: GLE 23U32E  
DOB: 25/03/2023

WON-CANYA KOWBOY (RJU K4E) (P/S)  
SIRE: **GLENLEA KOWBOY Q405 (GLE Q405E) (P)**  
GLENLEA NOLANA 60TH (GLE G1E) (P/S)  
LITTLE VALLEY GRANDIOSE (GKB G5E) (AI) (P)  
DAM: **ORARA WATERFALL NOLANA 8TH (WFA N15E) (P)**  
VALLEY VIEW NOLANA 52 (VLW H52E) (AI) (P)



February 2024 Australasian Charolais Single-Step BREEDPLAN

	CE Dir	GL	BW	200	400	600
EBV	-2.2	-1.7	+1.0	+14	+30	+43
Acc	34%	52%	61%	53%	50%	52%
	Milk	SS	Carc Wt	EMA	Rump	IMF
EBV	+13	+0.7	+25	+1.4	+0.3	+0.4
Acc	35%	54%	40%	36%	39%	35%

**COMMENTS:** Gentle heifer with extra length, easy finishing, growth and attractive polled head. Youngest Kowboy heifer in this sale and one of the best. Dam is an easy doing, early maturing, great milking female that has just weaned another outstanding Red Factor heifer. EBV's Top 5% milk, Top 20% all growth, all positive Carcass traits. **Ready to join.**

**Ready to join.**

LOT  
93

CLARINDA  
**QUE JANELL (P)**

TATTOO: KEN 22T57E  
DOB: 17/09/2022

JWX DOWNTOWN 7C (OAC L6112E) (P)  
SIRE: **CLARINDA DOWNTOWN Q32 (KEN Q32E) (AI) (P)**  
LANGI GHIRAN ELOISE 6 (JRR J14E) (P)  
ISMAEL P (OAF J8282F) (P)  
DAM: **CLARINDA ISMEAL JANELL (KEN Q41E) (AI) (P)**  
CLARINDA DOC JANELL (KEN M11D) (P)



February 2024 Australasian Charolais Single-Step BREEDPLAN

	CE Dir	GL	BW	200	400	600
EBV	-5.7	-6.5	+1.0	+18	+33	+51
Acc	42%	65%	66%	61%	60%	59%
	Milk	SS	Carc Wt	EMA	Rump	IMF
EBV	+5	+1.5	+26	+2.4	+1.2	+0.2
Acc	38%	55%	48%	42%	52%	42%

**COMMENTS:** Early maturing, easy doing, extra soft heifer with outstanding EBV's. Sire is an early gestation, easy calving performance bull. Dam is an outstanding Polled half French cow, that was a feature cow in the Clarinda dispersal last year purchased by Taylor Charolais and Livestock, Nowra NSW. EBV's top 10% all growth, Top 15% EMA and Fat Cover. 12 traits above breed average.

**Ready to join.**

LOT  
94

GLENLEA  
**ESTELLA 52ND (P)**

TATTOO: GLE 22T411E  
DOB: 30/12/2022

PALGROVE HANNIBAL (PK H1312E) (AI) (ET) (P) (R/F)  
SIRE: **CHALLAMBI ROVER (CHA R24E) (AI) (ET) (P) (R/F)**  
CHALLAMBI HIGHNESS M9 (CHA M9E) (AI) (ET) (P)  
AIRLIE Z47E (A1S Z47E) (D)  
DAM: **DOUGLASDALE ESTELLA (DOU D33E)**  
PALGROVE ESTELLA 87 (PK T130E) (H)



February 2024 Australasian Charolais Single-Step BREEDPLAN

	CE Dir	GL	BW	200	400	600
EBV	-5.6	-1.5	+0.8	+9	+24	+30
Acc	37%	50%	58%	53%	51%	51%
	Milk	SS	Carc Wt	EMA	Rump	IMF
EBV	+6	+1.1	+20	+2.5	+0.7	+0.5
Acc	40%	47%	41%	34%	39%	33%

**COMMENTS:** Great heifer to finish the live lots. **SHOW PROSPECT** heifer. Long, deep, and great carcass with good finish, all backed up by her EBV's. Sired by one of our new PP Polled stud sires in Challambi Rover (PP) R/F. Dam is has produced outstanding progeny, raising this heifer at 14 years, from a cow family is probably the best known in Australian Charolais. EBV's Moderate BW, early maturing growth curve, Top 10% EMA, well above average EMA and Fat Cover.

**Ready to join.**

**Glenlea Beef and our partners are excited to offer these specially selected embryos lots.**

E.T. is an involved process with many variables and we have worked with many providers over the years. We have been working with Mirrabrook E.T. services now for over 2 years with both donors and recipient transfers. Their management of animals, both donors and recipients, quality of supplied recipients and **INDUSTRY LEADING CONCEPATION RATES** make them a valued partner to implant the embryos you purchase from this sale or privately from us.

To underline our faith in their services **Glenlea Beef will offer an industry first 60% conception rate guarantee on the frozen embryos offered in this sale, if implanted at Mirrabrook.** This guarantee applies to either their supplied recipients or yours when delivered to Mirrabrook and used in a program.

The Glenlea Beef team have always strived to offer value in all our cattle and services and this is another aspect of that key goal. The absolute key to E.T. and IVF programs is high conception rates and live calves, Mirrabrook can get the recipients PTIC and then you take them home and calve them under your management.



**MURRIBROOK**  
— ET & RECIPIENT SERVICES —

**THE PREFERRED PROVIDER FOR  
RECIPIENTS & EMBRYO TRANSFER  
SERVICES FOR GLENLEA BEEF  
AND  
TAYLOR CHAROLAIS & LIVESTOCK**



**MURRIBROOK ET & RECIPIENT SERVICES**

Moss Vale, NSW - Borambola, NSW

0419 431 661

[info@murribrook.com.au](mailto:info@murribrook.com.au)

[www.murribrook.com.au](http://www.murribrook.com.au)

*Helping you achieve your breeding goals!*



LOT  
95

## 4 Embryos

### GLENLEA JUST RED x VALLEY VIEW ESTELLA 416

RANGAN PARK REDEMPTION E42 (RAN E42E) (P)

SIRE: GLENLEA JUST RED (GLE J5E) (AI) (ET) (P) (R/F)

GLENLEA JANET U6E R/F (GLE U6E) (P)

IMPAIR 1893102983 (OAF N189F)

DAM: VALLEY VIEW ESTELLA 416 (VLW H26E) (AI) (ET) (P)

PALGROVE ESTELLA 214 (PK A416E) (P)



#### Expected Average Progeny Value

	CE Dir	GL	BW	200	400	600	Milk	SS	Carc Wt	EMA	Rump	IMF
EBV	-7.8	-1.8	+1.9	+17	+34	+50	+13	0.0	+27	+2.2	0.0	+0.5



**Estella 416** has produced outstanding progeny throughout her lifetime to several different sires, from "Pheonix", to his full brother "Superbowl" to "Estella 41st". Well over \$100,000 in progeny sales.



**Pheonix** PP Polled is breeding great progeny and a full sibling to the embryos on offer. These embryos could produce your next stud sire and / or next champion / donor female. Sold for \$25,000.

**COMMENTS:** Breed leading growth, carcass and milk with ideal phenotype is what Estella 416 delivers. Top 1% milk, Top 5% 600-day weight and MW with top 1% EMA and Beef yield.

Glenlea Just Red, sire of these embryos, is trait leader for 400- and 600-day growth, all positive carcass data, top 5% IMF and PP Polled and 99% apricot progeny from white cows.

**Homozygous (PP) Polled**

LOT  
96

## 4 Embryos

### RBM FARGO Y111 x VALLEY VIEW ESTELLA 416

SPARROWS FARGO 811U (PED D4935E) (P)

SIRE: RBM FARGO Y111 (P) (OAU G9088E)

HC RHINESTONE 5100 (PED A6859E) (P)

IMPAIR (OAF N189F)

DAM: VALLEY VIEW ESTELLA 416 (VLW H26E) (AI) (ET) (P)

PALGROVE ESTELLA 214 (PK A416E) (P)



#### Expected Average Progeny Value

	CE Dir	GL	BW	200	400	600	Milk	SS	Carc Wt	EMA	Rump	IMF
EBV	+1.8	-4.3	+0.1	+18	+32	+42	+11	+1.0	+29	+2.4	+1.8	-0.1



Full sibling to Embryos, **Estella 41st**. Half share sold to Moondogundi Charolais at our 2023 Female Sale for \$9,750.



Sire of embryos **RBM Fargo (PP)**, an early maturing, performance sire imported from the USA, where he has thousands of progeny and is a benchmark sire.

**COMMENTS:** Fargo semen is no longer available. Embryos out of high caliber cows like H26 are very rare. This combination will produce herd sire's and elite females. Check out the mid parent EBV's of progeny!

Fargo is a breed leader for fat cover and Low BW, and explosive early growth that combined with the growth, maternal and carcass of H26 is how you get females the class of Estella 41st.

**Homozygous (PP) Polled**

LOT  
97

## 4 Embryos

### SILVERSTREAM HOLSTER H187 x VALLEY VIEW REBBY CIGAR 14TH

SILVERSTREAM EVOLUTION E168 (OAN E168E) (P)

LHD CIGAR E46 (OAU Q46E) (P)

SIRE: SILVERSTREAM HOLSTER H187 (OAN H187E) (P)

DAM: VALLEY VIEW REBBY CIGAR 14TH (VLWH14E) (AI) (ET) (P)

SILVERSTREAM JILLY E105 (OAN E105E) (P)

GOBONGO REBBY D213E (GO D213E) (P)



#### Expected Average Progeny Value

	CE Dir	GL	BW	200	400	600	Milk	SS	Carc Wt	EMA	Rump	IMF
EBV	-0.9	-4.4	+0.1	+13	+21	+25	+4	+0.7	+13	+1.1	+0.1	-0.4

**COMMENTS:** Holster is, in our opinion, the best Evolution son. Progeny are sort after whenever offered.



**H14** at 9 years old, big bodied, easy doing, perfect udder. Put extra beef yield into her progeny. Over \$80,000 in progeny sales.



Full sibling to embryos, **Pluto**. Powerful retained sire at Glenlea.

These embryos are full siblings to outstanding progeny for Glenlea, "Pluto" pictured and P36 his full sister who is a donor at Glenlea herself.

Stud sires and elite females are the goal with embryos of this calibre.

LOT  
98

## 4 Embryos

### SILVERSTREAM HOLSTER H187 x VALLEY VIEW REBBY BRAVO 17TH

SILVERSTREAM EVOLUTION E168 (OAN E168E) (P)

LT RIO BRAVO 3181 P (OAU Y5507E) (P)

SIRE: SILVERSTREAM HOLSTER H187 (OAN H187E) (P)

DAM: VALLEY VIEW REBBY BRAVO 17TH (VLW J1E) (AI) (ET) (P)

SILVERSTREAM JILLY E105 (OAN E105E) (P)

GOBONGO REBBY D213E (GO D213E) (P)



#### Expected Average Progeny Value

	CE Dir	GL	BW	200	400	600	Milk	SS	Carc Wt	EMA	Rump	IMF
EBV	+5.8	-4.3	-1.4	+11	+19	+23	+4	+0.6	+14	+1.2	+1.7	+0.4

**COMMENTS:** These embryos will be full siblings to an outstanding female like P71 and Stud sire Glenlea Pistol.



**J1E**, one of the gentlest cows in our whole program of 1,000 charolais cows. Great producer, stud sires "Pistol" and "Quartermaster" who sold for \$18,000.



**P71**, full sibling to Embryos, sold at our 2021 sale for \$10,000 to J & S Charolais SA.

In addition to being a maternal sibling to Glenlea Quartermaster who is a stud sire at Charnelle Charolais.

This female just produces the great ones time and again. Her 2017 daughter is also in our donor herd.

LOT  
99

## 4 Embryos

### SCX JEHU 233E x GLENLEA ESTELLA 41ST

SCR TRIUMPH 2135 (OAC H5788E) (P)

SIRE: SCX JEHU 233E (OAC N7683E) (P)

SCX MISS MAGNUM 109X (PED F4331E) (P)

RBM FARGO Y111 (OAU G9088E) (P)

SIRE: GLENLEA ESTELLA 41ST (GLE 22T117E) (AI) (ET) (P)

VALLEY VIEW ESTELLA 416 (VLW H26E) (P)

#### Expected Average Progeny Value

	CE Dir	GL	BW	200	400	600	Milk	SS	Carc Wt	EMA	Rump	IMF
EBV	-2.9	-4.0	+0.7	+18	+30	+40	+6	+1.5	+23	+1.3	+1.8	+0.1

**COMMENTS:** This mating will be an outstanding combination.

Our first Jehu calves will come through our sales over the next year and impress both stud and commercial buyers.

A very safe option to jump forward in genetics. Phenotype and EBV's are close to perfect. PP Polled progeny by pedigree.



**T117** is from 5 generations of donors. Aged 14 months in photo. Breed leading EBV's data. 1/2 share made \$9,750 in our 2023 Female Sale to Moondoogundi Charolais.

Homozygous (PP) Polled



**SCX Jehu** at 5 years of age. He is breeding progeny with early maturity, big carcass yield and top of the breed growth all with moderate BW.

Homozygous (PP) Polled

LOT  
100

## 4 Embryos

### SCX JEHU 233E x GLENLEA NOLANA 152ND

SCR TRIUMPH 2135 (OAC H5788E) (P)

SIRE: SCX JEHU 233E (OAC N7683E) (P)

SCX MISS MAGNUM 109X (PED F4331E) (P)

SILVERSTREAM PADRA P7 (OAN Q7E) (P)

DAM: GLENLEA NOLANA 152ND (GLE 22T224E) (AI) (P)

ORARA WATERFALL GLENLEA NOLANA 10TH (WFA L42E) (P)

#### Expected Average Progeny Value

	CE Dir	GL	BW	200	400	600	Milk	SS	Carc Wt	EMA	Rump	IMF
EBV	-3.4	-4.0	+1.1	+17	+32	+39	+6	+1.6	+22	+0.9	+0.2	+0.1

**COMMENTS:** T224 is a fifth generation Donor. The cow family is completely proven and predictable.

Combined with JEHU your next stud sire or elite female is as close to a sure thing as you come to in seedstock breeding.



**Nolana 152nd**, our most outstanding Padra daughter out of our biggest milking, highest weaning weight cow in the entire herd! Nolana sold to Warradingo Charolais for \$15,000 in our 2023 sale.



A side on photo of **SCX Jehu** taken same day as previous photo. Carcass, early maturity, strong polled head, very masculine bull, and his progeny exhibit all those traits.

Homozygous (PP) Polled

LOT  
101

## 4 Embryos

### GLENLEA JUST RED x GLENLEA JANET 91ST

RANGAN PARK REDEMPTION E42 (RAN E42E) (P)

SIRE: GLENLEA JUST RED (GLE J5E) (AI) (ET) (P) (R/F)

GLENLEA JANET U6E R/F (GLE U6E) (P)

RANGAN PARK RIO BRAVO D15 (RAN D15E) (P)

DAM: GLENLEA JANET 91ST (GLE L34E) (P)

GLENLEA JANET 30TH (GLE E10E) (P)



#### Expected Average Progeny Value

	CE Dir	GL	BW	200	400	600	Milk	SS	Carc Wt	EMA	Rump	IMF
EBV	-7.5	-3.4	+0.8	+15	+33	+39	+8	+0.3	+24	+2.3	+1.4	+0.9

**COMMENTS:** The mating of J5 our original "Glenlea Red Sire" and L34 is a great one for our last embryo lot.



**L34** is a magnificent cow. Carcass, outstanding fat cover, length and perfect udder. Amazing EBV's, 11 traits above breed average. Photo at 5 years.



**R32** is a full sibling to the embryos offered. Growth, frame and length, perfect udder, extra finish, great temperament.

Full sibling embryos to females the caliber of R32 rarely come on the market.

This may be your opportunity to add elite red female genetics to your herd, and breed your next stud sire in the same purchase.

**James & Jane Dockrill**  
 James: 0400 387 116  
 Jane: 0438 812 240  
 Ph: 02 66 63 1274  
 E: pinedock@gmail.com



The Dockrill family are an integral part of Glenlea Beef and provide a range of services, from feeding and showing our cattle, preparing bulls for our range of bull sales, marketing photos, clipping and video taking, production and editing. Additionally an increasing amount of private bulls directly from their Casino, NSW property.

All the rest of the Glenlea Beef team thank them for all their support, input and hard work without which Glenlea Beef could not operate in the way it does currently.

LOT  
**102**

**2 Embryos**  
**SCX JEHU 233E x BAUHINIA PARK QUEVE 22**  
**2 Embryos**  
**ANC Q PAC x BAUHINIA PARK QUEVE 22**

4 Embryos  
in total

Presented by Talyor Charolais and Livestock c/ Grant Taylor, Nowra NSW.

SCR TRIUMPH 2135 (OAC H5788E) (P)  
**SIRE: SCX JEHU 233E (OAC N7683E) (P)**  
SCX MISS MAGNUM 109X (PED F4331E) (P)

MOONGOOL PILGRIM (DP2 P319D) (P)  
**DAM: BAUHINIA PARK QUEVE 22 (BAU 22T58E) (P)**  
BAUHINIA PARK QUEVE 12 (BAU L114E) (P)

Expected Average Progeny Value

	CE Dir	GL	BW	200	400	600	Milk	SS	Carc Wt	EMA	Rump	IMF
EBV	-5.9	-1.8	+2.4	+19	+30	+44	+2	+1.6	+23	+1.2	0.0	-0.1

ANC MAC (ANC M6F) (P)  
**SIRE: ANC Q PAC (P) (ANC Q618F)**  
ANC WILMURI (ANC K252F)

MOONGOOL PILGRIM (DP2 P319D) (P)  
**DAM: BAUHINIA PARK QUEVE 22 (BAU 22T58E) (P)**  
BAUHINIA PARK QUEVE 12 (BAU L114E) (P)

Expected Average Progeny Value

	CE Dir	GL	BW	200	400	600	Milk	SS	Carc Wt	EMA	Rump	IMF
EBV	-1.2	-1.1	+2.1	+16	+23	+35	+1	+1.0	+20	+1.8	-1.8	-0.5



**Queve 22nd**, Dam of embryos offered in this lot, selected privately as the pick "T" drop heifers in the Bauhinia herd. From one of the most powerful individual cows in a herd of powerful cows. Length, bone, carcass, performance, loose hided, maximum performance female. Photo taken at 16 months.

**Homozygous (PP) Polled**



**ANC Q-Pac (P)**, sire of second lot of embryos on offer.

**COMMENTS:** Queve 22nd stood out when we inspected the 2022 "T" heifers, her dam, sire and siblings. A full brother is a retained sire in the Bauhinia herd. Her powerful phenotype, extra bone and overall beef yield was what we sort in a donor quality female.

The mating with **SCX JEHU** will give the same outcome with more fat cover and **Homozygous Polled progeny by pedigree**.

The mating to the Full French, \$47,000 **ANC Q-Pac** will produce all Polled progeny with breed leading beef yield and muscling, while moderating BW.

**These will be the only embryos offered from this female until at least 2026, if ever again!**



**Queve 12th**, Dam of Queve 22nd and grand dam of embryos. A picture says 1000 words. Polled Power! Combining all the best sires and the most valued cow family in the Bauhinia stud herd over the last 20+ years. Photo taken March 2024, 9 years old ready to wean her 2023 bull calf.

# EMBRYOS FOR PRIVATE SALE

Glenlea Beef has recently had a stock take of all our embryos on hand and we have a great selection that would be ideal to start a stud, add a red factor program to your existing white herd or some special bloodlines. Please simply call or email Rod Binny to receive a list and pricing.

LOT  
**103**

## 10 Semen Straws GLENLEA JUST RED (AI) (ET) (P) (R/F)

TATTOO:  
GLE J5E

HARVIE REDEMPTION 36P (OAC Z6641E) (P)  
SIRE: RANGAN PARK REDEMPTION E42 (RAN E42E) (P)  
RANGAN PARK SHOWGIRL C7 (RAN C7E)

GLENLEA MEATBALL (GLE M44E) (P)  
DAM: GLENLEA JANET U6E R/F (GLE U6E) (P)  
GLENLEA JANET N36E (GLE N36E) (P)



### February 2024 Australasian Charolais Single-Step BREEDPLAN

	CE Dir	GL	BW	200	400	600	Milk	SS	Carc Wt	EMA	Rump	IMF
EBV	-15.8	-0.4	2.8	18	39	54	8	-0.1	25	1	0.9	0.9
Acc	70%	86%	88%	81%	81%	81%	68%	82%	70%	62%	69%	60%

**COMMENTS:** This will be the last semen ever offered for public sale in this sire!

A legend in our herd, high selling sons and daughters, including the highest priced female sold at auction in 2021 at \$26,500.

Great progeny on offer in this sale!

Breed growth trait leader, **Homozygous Polled and Homozygous Red**. 99% of his progeny are apricot out of white cows.



LOT  
**104**

# 10 Semen Straws SCX JEHU 233E (P)

TATTOO:  
OAC N7683E

SCR TUFFY 0119 (PED F7626E) (P)  
**SIRE: SCR TRIUMPH 2135 (OAC H5788E) (P)**  
SCR MS BABY DOLL 7140 (PED C6627E) (P)

SCX HILARIO 49T (PED C7629E) (P)  
**DAM: SCX MISS MAGNUM 109X (PED F4331E) (P)**  
SCX MISS CHICO 48P (PED Z4328E) (P)

## February 2024 Australasian Charolais Single-Step BREEDPLAN

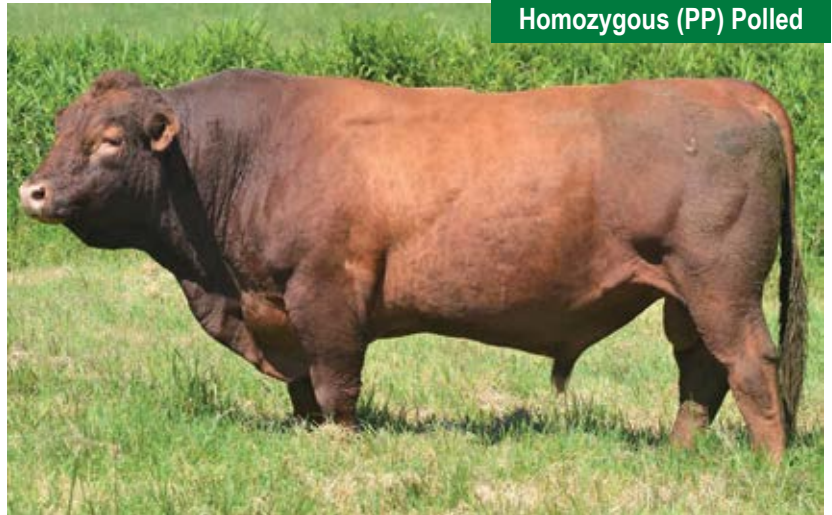
	CE Dir	GL	BW	200	400	600	Milk	SS	Carc Wt	EMA	Rump	IMF
EBV	-7.9	-3.8	1	22	36	47	1	2.4	23	0.4	1.6	0.3
Acc	61%	93%	93%	68%	67%	68%	38%	53%	48%	31%	38%	29%

**COMMENTS:** This will be the only semen offered of JEHU for Public sale in 2024. A unique opportunity to have exclusive semen to produce progeny on a sire known around the world.

JEHU is a bull that will achieve much in Australian and New Zealand Charolais. Numerous comments on this bull's progeny are made throughout this catalogue, and four calves at foot sired by him are on offer on their dams, Lots 24 to 27.

Silverstream Charolais own the NZ rights in Jehu.

The successful purchaser would have the opportunity to purchase more semen privately from Glenlea if required.



This semen is not available to breeders in QLD or Victoria. Breeders in NSW, SA, WA and TAS only.

LOT  
**105**

# 10 Semen Straws GLENLEA BIG GUN (AI) (P) (R/F)

TATTOO:  
GLE B10E

BLASON 4286100325 (PED X286F)  
**SIRE: ICARE (OAF N7193F)**  
DOUCETTE (PED X7188F)

GLENLEA MEATBALL (GLE M44E) (P)  
**DAM: GLENLEA JANET U6E R/F (GLE U6E) (P)**  
GLENLEA JANET N36E (GLE N36E) (P)

## February 2024 Australasian Charolais Single-Step BREEDPLAN

	CE Dir	GL	BW	200	400	600	Milk	SS	Carc Wt	EMA	Rump	IMF
EBV	-24.8	-1.9	4	20	33	47	4	0.8	27	2.5	-1.6	-0.5
Acc	74%	81%	90%	82%	80%	81%	78%	72%	67%	53%	62%	48%

**COMMENTS:** This will be the only semen ever offered for public auction in this sire!

A very powerful sire out of a super breeding cow Janet U6. Big Gun produced many high selling progeny in the early 2010's for us and we have returned to use him as our power red factor bull.

A unique bull being a half French polled bull, sired by a paternal brother to Impair.

Having more carcass yield and tremendous bone than any red bull we can find, a true impact sire that we wanted to share with our old and new clients in this Extravaganza sale.



LOT  
**106**

# 10 Semen Straws GLENLEA QUINTUS (P)

TATTOO:  
GLE Q64E

RANGAN PARK REDEMPTION E42 (RAN E42E) (P)

GLENLEA HI GUY (GLE H52E) (P)

SIRE: GLENLEA HONOURABLE (VLW H25E) (P)

DAM: ORARA WATERFALL GLENLEA NOLANA 10TH (WFAL42E)(P)

FERNVALE CHIFFON (FEN C22E)

VALLEY VIEW NOLANA 52 (VLW H52E) (P)



## February 2024 Australasian Charolais Single-Step BREEDPLAN

	CE Dir	GL	BW	200	400	600	Milk	SS	Carc Wt	EMA	Rump	IMF
EBV	-17.4	-0.2	4.1	26	47	74	5	1.3	36	2.5	0.5	0.9
Acc	48%	71%	74%	66%	66%	68%	50%	68%	54%	48%	53%	47%

**COMMENTS:** This will be the only semen ever offered for public auction in this sire!

This sire is an amazing son of impact sire Glenlea Honorable (P) R/F. Growth, overall carcass and extra bone, loose hide and very fine hair type, body length, amazing softness, very strong milk and maternal strength coming from his Dam. His Dam is our highest milking and highest weaning weight cow in the entire herd, L42.

His first daughters have just calved and are massive volumed, big butted, perfect teats, pigment and visibly larger udder capacity than their dams.

His maternal sister is Donor Glenlea Nolana 152nd who has embryos being offered at lot 100.

His EBV's are top 1% growth in a medium framed phenotype, IMF% in top 5% with EMA in top 15%, curve bending data that is extremely rare. We can't wait to offer some of his progeny in our sales in the future.

**A golden opportunity in the last lot of this Extravaganza sale for 2024!**



**END OF SALE.**  
Thank you for your support.

## SEMEN FOR PRIVATE SALE

Glenlea Beef has recently had a stock take of all our semen on hand and we have a great selection available. Anyone purchasing females in this sale will get an automatic 20% discount off nominated pricing. Great value! Call or email Rod Binny for list.



# BUYERS INSTRUCTION SLIP

**Charolais Female Sale  
& Barber Dispersal**

April 2024



Please email completed form to:  
Sandra Wilson, Elders Stud Stock  
E: [sandra.wilson@elders.com.au](mailto:sandra.wilson@elders.com.au)

Name: \_\_\_\_\_

Address: \_\_\_\_\_

\_\_\_\_\_ PIC No: \_\_\_\_\_

Email: \_\_\_\_\_

Phone: \_\_\_\_\_ Mobile: \_\_\_\_\_

Account To: \_\_\_\_\_

Lot No's Purchased: \_\_\_\_\_ Total Number of Lots: \_\_\_\_\_

Society registration transfer Required?  Yes  No Society / Tattoo Prefix: \_\_\_\_\_

Transport arrangements. Please give details:

Name of Carrier: \_\_\_\_\_ Phone: \_\_\_\_\_

Destination: \_\_\_\_\_

Insurance Required: \_\_\_\_\_

Other Instructions: \_\_\_\_\_

Agent Name and Contact: \_\_\_\_\_

Buyers Signature: \_\_\_\_\_ Date: \_\_\_\_\_ / \_\_\_\_\_ / \_\_\_\_\_

**Verbal instructions will not be accepted**



**Glenlea  
Mandy (P)  
GLE Q335E**

Junior Champion  
BEEF AUSTRALIA  
2021

*Paternal sister to  
Lots 13, 30 and 62*



**Glenlea  
Confidence 32nd  
(PP) (R/F) GLE Q88E**

Reserve Junior  
Champion BEEF  
AUSTRALIA 2021

*Paternal Sister to  
Lots 1, 5 and 23.*



**Glenlea  
Isabella 14th  
(PP) (R/F) GLE R24E**

Reserve Heifer Calf  
Champion BEEF  
AUSTRALIA 2021

*Daughter of Lot 60.*

*Paternal sister to  
Lots 20, 53 and 54.*

*Calves at Foot on all  
Lots 28 to 40.*

# 2023 PHOTOS



**LOT 9 ~ JAJ P59E**



**LOT 13 ~ GLE Q61E**



**LOT 14 ~ JAJ P65E**



**LOT 33 ~ JAJ N81E**



**LOT 35 ~ DGI N44E**



**LOT 37 ~ DSK P6E**



**LOT 80 ~ MAW T33E**



**LOT 82 ~ MAW T10E**



**LOT 86 ~ GLE U18E**



**LOT 87 ~ GLE U904E**